



# Reliability of WLCG Tier-1 Sites + CERN

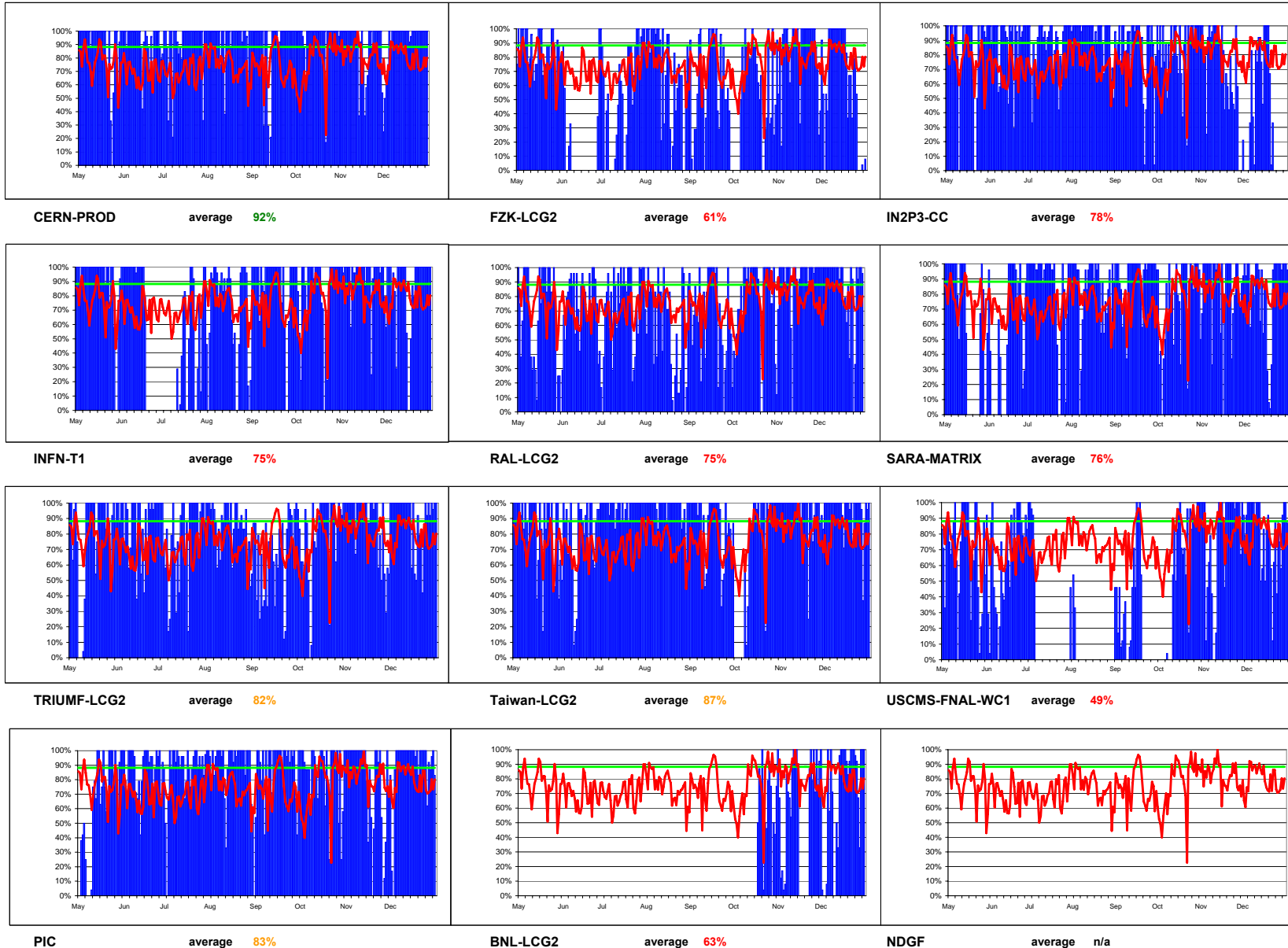
2006

Data from SAM monitoring. Site availability and reliability as agreed in WLCG MB on 11 July 2006 (scheduled interruptions are excluded when calculating reliability)

Availability is plotted May through August, reliability is plotted from September on. Availability means tests passed, reliability means test passed or site scheduled down.

target (90% of MoU) — 88%      site average colour coding: < 90% of target — ≥ 90% of target — ≥ target —

average (all sites) — 75%      8 best sites 81%      # sites: ≥ target 1      ≥ 90% of target 4





### Site Reliability - WLCG Tier-1s + CERN

The table shows *availability* for May through August, and *reliability* from September on  
BNL included in average from November

	CERN- PROD	FZK- LCG2	IN2P3- CC	INFN- T1	RAL- LCG2	SARA- MATRIX	TRIUMF- LCG2	Taiwan- LCG2	USCMS- FNAL-WC1	PIC	BNL- LCG2	average - all sites	8 best sites average			# sites ≥ target	# sites ≥90% target
													availability	reliability	(% target)		
<b>May</b>	89%	85%	83%	89%	68%	58%	77%	87%	68%	61%	n/a	77%	81%	-	-	-	-
<b>June</b>	92%	15%	89%	62%	76%	49%	88%	75%	64%	88%	n/a	70%	79%	-	-	-	-
<b>July</b>	90%	54%	87%	31%	73%	84%	80%	98%	20%	87%	n/a	70%	82%	83%	94%	2	6
<b>August</b>	95%	69%	94%	69%	59%	83%	87%	97%	4%	88%	n/a	74%	85%	86%	98%	3	6
<b>September</b>	89%	57%	83%	88%	69%	92%	66%	85%	26%	90%	n/a	74%	80%	83%	94%	3	6
<b>October</b>	96%	54%	85%	85%	77%	74%	80%	66%	55%	85%	n/a	76%	80%	81%	92%	1	5
<b>November</b>	90%	85%	70%	94%	89%	84%	87%	95%	77%	79%	56%	82%	86%	88%	100%	4	8
<b>December</b>	93%	63%	37%	84%	89%	82%	91%	95%	79%	90%	70%	79%	86%	88%	100%	5	8
<b>average</b>	<b>92%</b>	<b>61%</b>	<b>78%</b>	<b>75%</b>	<b>75%</b>	<b>76%</b>	<b>82%</b>	<b>87%</b>	<b>49%</b>	<b>83%</b>	<b>63%</b>	<b>75%</b>	<b>81%</b>	<b>81%</b>	<b>92%</b>	<b>1</b>	<b>4</b>



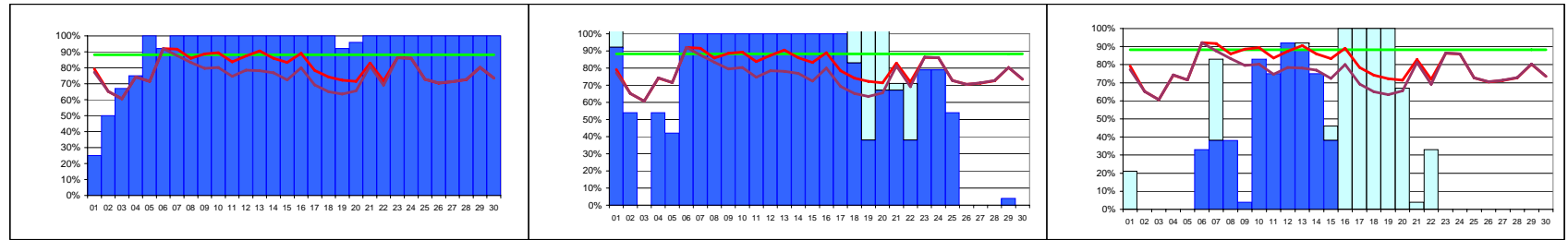
# Availability of WLCG Tier-1 Sites + CERN December 2006

From September the best result each day of the OPS and Dteam VO's is used. BNL is included in the calculation of the overall averages only from November.

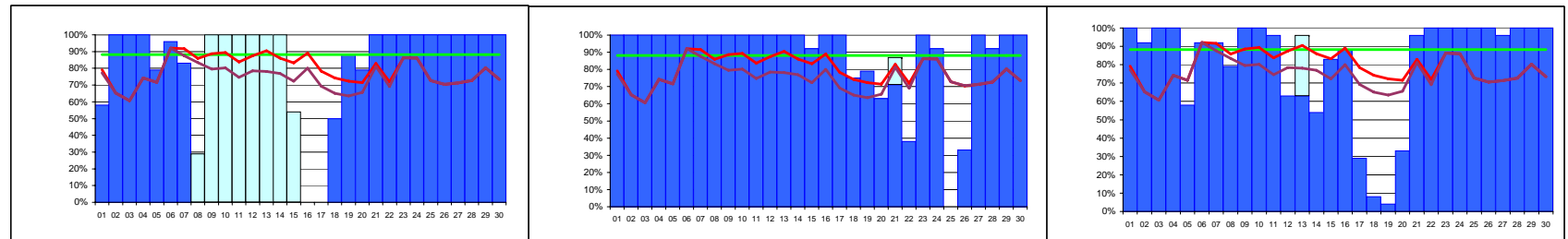
Data from SAM monitoring. Site reliability and availability as agreed in WLCG MB on 11 July 2006 (scheduled interruptions are excluded when calculating reliability)

legend: tests passed (blue bar), scheduled down (light blue bar), availability (red line), reliability (purple line), target (green line) 88%  
 site average colour coding: < 90% of target (red), ≥ 90% of target (orange), ≥ target (green)

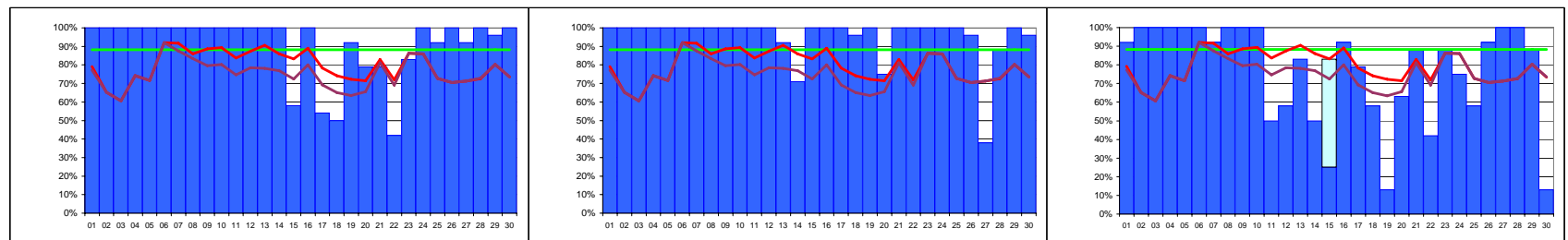
average (all sites): availability 75%, reliability 79%  
 average (8 best sites): availability 86%, reliability 88%



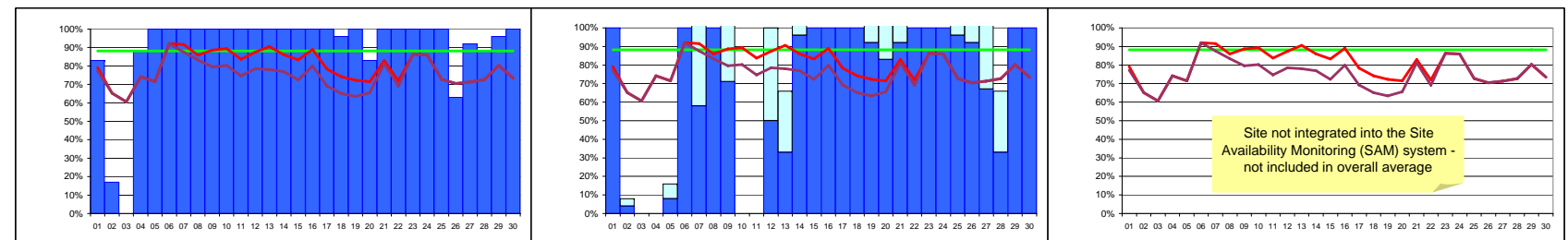
**CERN-PROD** avail: 93% reliability: 93%      **FZK-LCG2** avail: 63% reliability: 63%      **IN2P3-CC** avail: 18% reliability: 37%



**INFN-T1** avail: 62% reliability: 84%      **RAL-LCG2** avail: 88% reliability: 89%      **SARA-MATRIX** avail: 81% reliability: 82%



**TRIUMF-LCG2** avail: 91% reliability: 91%      **Taiwan-LCG2** avail: 95% reliability: 95%      **USCMS-FNAL-WC1** avail: 77% reliability: 79%



**PIC** avail: 90% reliability: 90%      **BNL** avail: 70% reliability: 70%      **NDGF** avail: n/a reliability: n/a



## Site Reliability and Availability

December 2006

Colour coding limits: **≥TARGET:** 88%

**≥90% OF TARGET:** 79%

### WLCG Tier-1s + CERN

Data from SAM monitoring. Site **reliability and** availability as agreed in WLCG MB on 11 July 2006 (*scheduled interruptions are excluded when calculating reliability*)

The best result each day of the OPS and Dteam VOs is used.

OPS VO is used when the cell has a   yellow background.

#### Reliability

Date		CERN-PROD	FZK-LCG2	IN2P3-CC	INFN-T1	RAL-LCG2	SARA-MATRIX	TRIUMF-LCG2	Taiwan-LCG2	USCMS-FNAL WC1	PIC	average reliability	target	BNL-LCG2	NDGF
01/12/2006	1	25%	92%	21%	58%	100%	100%	100%	100%	92%	83%	79%	88%	100%	0%
02/12/2006	2	50%	54%	0%	100%	100%	92%	100%	100%	100%	17%	65%	88%	4%	0%
03/12/2006	3	67%	0%	0%	100%	100%	100%	100%	100%	100%	0%	61%	88%	0%	0%
04/12/2006	4	75%	54%	0%	100%	100%	100%	100%	100%	100%	87%	74%	88%	0%	0%
05/12/2006	5	100%	42%	0%	79%	100%	58%	100%	100%	100%	100%	72%	88%	8%	0%
06/12/2006	6	92%	100%	33%	96%	100%	92%	100%	100%	100%	100%	92%	88%	100%	0%
07/12/2006	7	100%	100%	83%	83%	100%	92%	100%	100%	92%	100%	92%	88%	58%	0%
08/12/2006	8	100%	100%	37%	29%	100%	79%	100%	100%	100%	100%	86%	88%	100%	0%
09/12/2006	9	100%	100%	4%	100%	100%	100%	100%	100%	100%	100%	89%	88%	71%	0%
10/12/2006	10	100%	100%	83%	100%	100%	100%	100%	100%	100%	100%	89%	88%	0%	0%
11/12/2006	11	100%	100%	75%	100%	100%	96%	100%	100%	50%	100%	84%	88%	0%	0%
12/12/2006	12	100%	100%	92%	100%	100%	62%	100%	100%	58%	100%	87%	88%	50%	0%
13/12/2006	13	100%	100%	92%	100%	100%	96%	100%	92%	83%	100%	91%	88%	33%	0%
14/12/2006	14	100%	100%	75%	100%	100%	54%	100%	71%	50%	100%	86%	88%	96%	0%
15/12/2006	15	100%	100%	46%	54%	92%	83%	58%	100%	83%	100%	83%	88%	100%	0%
16/12/2006	16	100%	100%	100%	0%	100%	87%	100%	100%	92%	100%	89%	88%	100%	0%
17/12/2006	17	100%	100%	100%	0%	100%	29%	54%	100%	79%	100%	78%	88%	100%	0%
18/12/2006	18	100%	83%	100%	50%	75%	8%	50%	96%	58%	96%	74%	88%	100%	0%
19/12/2006	19	92%	37%	100%	87%	79%	4%	92%	100%	12%	100%	72%	88%	92%	0%
20/12/2006	20	96%	67%	67%	79%	62%	33%	79%	75%	62%	83%	71%	88%	83%	0%
21/12/2006	21	100%	67%	4%	100%	87%	96%	79%	100%	87%	100%	83%	88%	92%	0%
22/12/2006	22	100%	37%	33%	100%	37%	100%	42%	100%	42%	100%	72%	88%	100%	0%
23/12/2006	23	100%	79%	0%	100%	100%	100%	83%	100%	87%	100%	86%	88%	100%	0%
24/12/2006	24	100%	79%	0%	100%	92%	100%	100%	100%	75%	100%	86%	88%	100%	0%
25/12/2006	25	100%	54%	0%	100%	0%	100%	92%	100%	58%	100%	73%	88%	96%	0%
26/12/2006	26	100%	0%	0%	100%	33%	100%	100%	96%	92%	62%	70%	88%	92%	0%
27/12/2006	27	100%	0%	0%	100%	96%	100%	92%	37%	100%	92%	71%	88%	67%	0%
28/12/2006	28	100%	0%	0%	100%	92%	100%	100%	87%	100%	87%	73%	88%	33%	0%
29/12/2006	29	100%	4%	0%	100%	100%	100%	96%	100%	87%	96%	80%	88%	100%	0%
30/12/2006	30	100%	0%	0%	100%	100%	100%	100%	96%	12%	100%	73%	88%	100%	0%
31/12/2006	31	100%	8%	0%	100%	96%	96%	100%	100%	100%	83%	80%	88%	100%	0%
Average reliability		93%	63%	37%	84%	89%	82%	91%	95%	79%	90%	79%	88%	70%	0%



## Site Reliability and Availability

December 2006

Colour coding limits:  $\geq$ TARGET: 88%

$\geq$ 90% OF TARGET: 79%

### WLCG Tier-1s + CERN

Data from SAM monitoring. Site reliability and availability as agreed in WLCG MB on 11 July 2006 (scheduled interruptions are excluded when calculating reliability)

#### Availability

Date		CERN-PROD	FZK-LCG2	IN2P3-CC	INFN-T1	RAL-LCG2	SARA-MATRIX	TRIUMF-LCG2	Taiwan-LCG2	USCMS-FNAL WC1	PIC	average availability	target	BNL-LCG2	NDGF
01/12/2006	1	25%	92%	0%	58%	100%	100%	100%	100%	92%	83%	77%	88%	100%	0%
02/12/2006	2	50%	54%	0%	100%	100%	92%	100%	100%	100%	17%	65%	88%	4%	0%
03/12/2006	3	67%	0%	0%	100%	100%	100%	100%	100%	100%	0%	61%	88%	0%	0%
04/12/2006	4	75%	54%	0%	100%	100%	100%	100%	100%	100%	88%	74%	88%	0%	0%
05/12/2006	5	100%	42%	0%	79%	100%	58%	100%	100%	100%	100%	72%	88%	8%	0%
06/12/2006	6	92%	100%	33%	96%	100%	92%	100%	100%	100%	100%	92%	88%	100%	0%
07/12/2006	7	100%	100%	38%	83%	100%	92%	100%	100%	92%	100%	88%	88%	58%	0%
08/12/2006	8	100%	100%	38%	0%	100%	79%	100%	100%	100%	100%	83%	88%	100%	0%
09/12/2006	9	100%	100%	4%	0%	100%	100%	100%	100%	100%	100%	80%	88%	71%	0%
10/12/2006	10	100%	100%	83%	0%	100%	100%	100%	100%	100%	100%	80%	88%	0%	0%
11/12/2006	11	100%	100%	75%	0%	100%	96%	100%	100%	50%	100%	75%	88%	0%	0%
12/12/2006	12	100%	100%	92%	0%	100%	63%	100%	100%	58%	100%	78%	88%	50%	0%
13/12/2006	13	100%	100%	88%	0%	100%	63%	100%	92%	83%	100%	78%	88%	33%	0%
14/12/2006	14	100%	100%	75%	0%	100%	54%	100%	71%	50%	100%	77%	88%	96%	0%
15/12/2006	15	100%	100%	38%	0%	92%	83%	58%	100%	25%	100%	72%	88%	100%	0%
16/12/2006	16	100%	100%	0%	0%	100%	88%	100%	100%	92%	100%	80%	88%	100%	0%
17/12/2006	17	100%	100%	0%	0%	100%	29%	54%	100%	79%	100%	69%	88%	100%	0%
18/12/2006	18	100%	83%	0%	50%	75%	8%	50%	96%	58%	96%	65%	88%	100%	0%
19/12/2006	19	92%	38%	0%	88%	79%	4%	92%	100%	13%	100%	63%	88%	92%	0%
20/12/2006	20	96%	67%	0%	79%	63%	33%	79%	75%	63%	83%	66%	88%	83%	0%
21/12/2006	21	100%	67%	0%	100%	71%	96%	79%	100%	88%	100%	81%	88%	92%	0%
22/12/2006	22	100%	38%	0%	100%	38%	100%	42%	100%	42%	100%	69%	88%	100%	0%
23/12/2006	23	100%	79%	0%	100%	100%	100%	83%	100%	88%	100%	86%	88%	100%	0%
24/12/2006	24	100%	79%	0%	100%	92%	100%	100%	100%	75%	100%	86%	88%	100%	0%
25/12/2006	25	100%	54%	0%	100%	0%	100%	92%	100%	58%	100%	73%	88%	96%	0%
26/12/2006	26	100%	0%	0%	100%	33%	100%	100%	96%	92%	63%	71%	88%	92%	0%
27/12/2006	27	100%	0%	0%	100%	100%	96%	92%	38%	100%	92%	71%	88%	67%	0%
28/12/2006	28	100%	0%	0%	100%	92%	100%	100%	88%	100%	88%	73%	88%	33%	0%
29/12/2006	29	100%	4%	0%	100%	100%	100%	96%	100%	88%	96%	80%	88%	100%	0%
30/12/2006	30	100%	0%	0%	100%	100%	100%	100%	96%	13%	100%	74%	88%	100%	0%
31/12/2006	31	100%	8%	0%	100%	96%	96%	100%	100%	100%	83%	80%	88%	100%	0%
<b>Average availability</b>		<b>93%</b>	<b>63%</b>	<b>18%</b>	<b>62%</b>	<b>88%</b>	<b>81%</b>	<b>91%</b>	<b>95%</b>	<b>77%</b>	<b>90%</b>	<b>75%</b>	<b>88%</b>	<b>70%</b>	<b>0%</b>

Average of 8 best sites	
availability	86%
reliability	88%



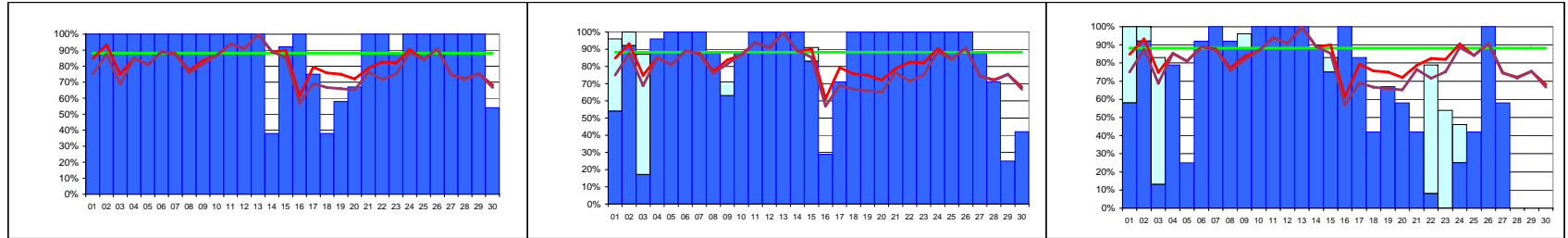
# Availability of WLCG Tier-1 Sites + CERN November 2006

As in September and October the best result each day of the OPS and Dteam VO is used. In November, for the first time, BNL is also used in calculating the overall averages.

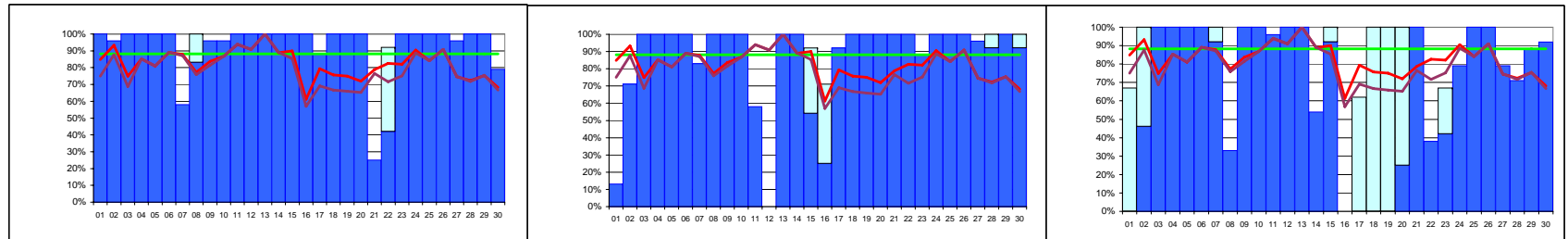
Data from SAM monitoring. Site reliability and availability as agreed in WLCG MB on 11 July 2006 (scheduled interruptions are excluded when calculating reliability)

**legend:** tests passed (blue bar), scheduled down (white bar) | 
 **availability** (red line), **reliability** (purple line), **target** (green line) 88% | 
 **site average colour coding:** < 90% of target (red), ≥ 90% of target (orange), ≥ target (green)

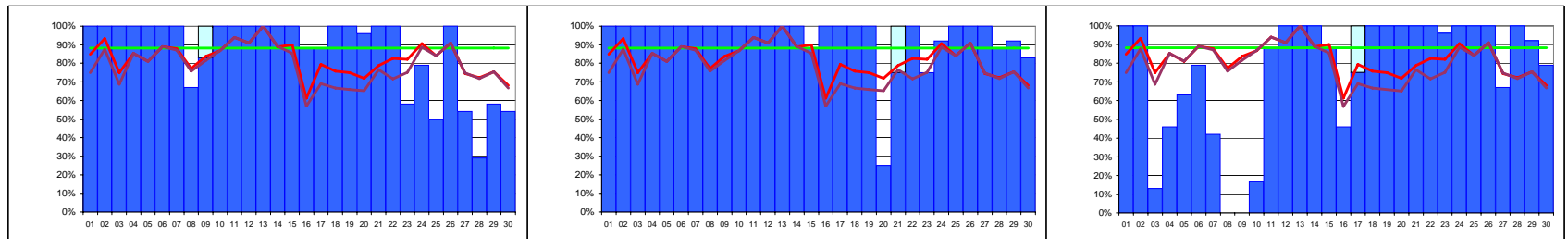
**average (all sites):** availability 79%, reliability 82% | 
 **average (8 best sites):** availability 86%, reliability 88%



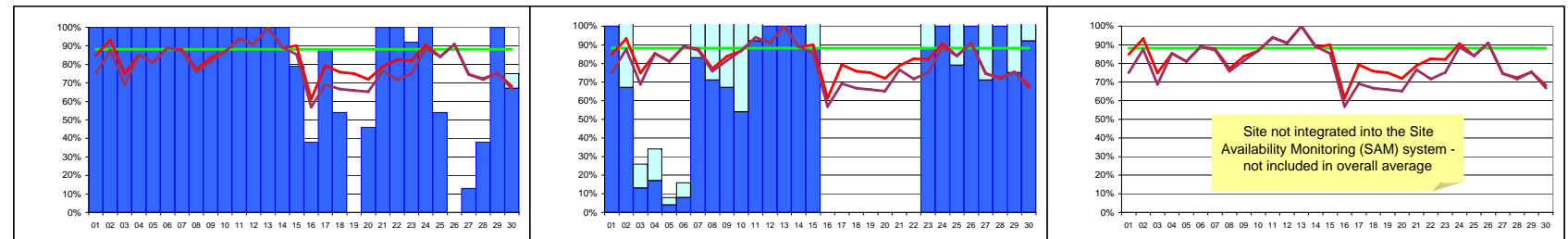
**CERN-PROD** avail: 90% reliability: 90% | 
 **FZK-LCG2** avail: 84% reliability: 85% | 
 **IN2P3-CC** avail: 61% reliability: 70%



**INFN-T1** avail: 92% reliability: 94% | 
 **RAL-LCG2** avail: 85% reliability: 89% | 
 **SARA-MATRIX** avail: 68% reliability: 84%



**TRIUMF-LCG2** avail: 87% reliability: 87% | 
 **Taiwan-LCG2** avail: 94% reliability: 95% | 
 **USCMS-FNAL-WC1** avail: 76% reliability: 77%



**PIC** avail: 79% reliability: 79% | 
 **BNL** avail: 56% reliability: 56% | 
 **NDGF** avail: n/a reliability: n/a



## Site Reliability and Availability

November 2006

Colour coding limits: **≥TARGET:** 88%

**≥90% OF TARGET:** 79%

### WLCG Tier-1s + CERN

Data from SAM monitoring. Site **reliability and** availability as agreed in WLCG MB on 11 July 2006 (*scheduled interruptions are excluded when calculating reliability*)

As in September the best result each day of the OPS and Dteam VOs is used.

OPS VO is used when the cell has a yellow background.

#### Reliability

Date		CERN-PROD	FZK-LCG2	IN2P3-CC	INFN-T1	RAL-LCG2	SARA-MATRIX	TRIUMF-LCG2	Taiwan-LCG2	USCMS-FNAL-WC1	PIC	average reliability	target	BNL-LCG2	NDGF
01/11/2006	1	100%	54%	100%	100%	12%	67%	100%	100%	100%	100%	85%	88%	100%	0%
02/11/2006	2	100%	92%	100%	96%	71%	100%	100%	100%	100%	100%	93%	88%	67%	0%
03/11/2006	3	100%	17%	83%	100%	100%	100%	100%	100%	12%	100%	75%	88%	12%	0%
04/11/2006	4	100%	96%	79%	100%	100%	100%	100%	100%	46%	100%	85%	88%	17%	0%
05/11/2006	5	100%	100%	25%	100%	100%	100%	100%	100%	62%	100%	81%	88%	4%	0%
06/11/2006	6	100%	100%	92%	100%	100%	100%	100%	100%	79%	100%	89%	88%	8%	0%
07/11/2006	7	100%	100%	100%	58%	83%	100%	100%	100%	42%	100%	88%	88%	83%	0%
08/11/2006	8	100%	87%	92%	100%	100%	33%	67%	100%	0%	100%	77%	88%	71%	0%
09/11/2006	9	100%	62%	96%	96%	100%	100%	100%	100%	0%	100%	84%	88%	67%	0%
10/11/2006	10	100%	87%	100%	96%	100%	100%	100%	100%	17%	100%	87%	88%	54%	0%
11/11/2006	11	100%	100%	100%	100%	58%	96%	100%	100%	87%	100%	94%	88%	92%	0%
12/11/2006	12	100%	100%	100%	100%	0%	100%	100%	100%	100%	100%	91%	88%	100%	0%
13/11/2006	13	100%	100%	100%	100%	100%	100%	100%	100%	100%	100%	100%	88%	100%	0%
14/11/2006	14	37%	100%	87%	100%	100%	54%	100%	100%	100%	100%	89%	88%	100%	0%
15/11/2006	15	92%	83%	83%	100%	92%	100%	100%	87%	87%	79%	90%	88%	87%	0%
16/11/2006	16	100%	33%	100%	100%	71%	0%	87%	100%	46%	37%	61%	88%	0%	0%
17/11/2006	17	75%	100%	83%	87%	92%	62%	87%	100%	100%	87%	79%	88%	0%	0%
18/11/2006	18	37%	100%	42%	100%	100%	100%	100%	100%	100%	54%	76%	88%	0%	0%
19/11/2006	19	58%	100%	67%	100%	100%	100%	100%	100%	100%	0%	75%	88%	0%	0%
20/11/2006	20	67%	100%	58%	100%	100%	100%	96%	25%	100%	46%	72%	88%	0%	0%
21/11/2006	21	100%	100%	42%	25%	100%	100%	100%	100%	100%	100%	79%	88%	0%	0%
22/11/2006	22	100%	100%	79%	92%	100%	37%	100%	100%	100%	100%	83%	88%	0%	0%
23/11/2006	23	87%	100%	54%	100%	87%	67%	58%	75%	96%	92%	82%	88%	87%	0%
24/11/2006	24	100%	100%	46%	100%	100%	79%	79%	92%	100%	100%	91%	88%	100%	0%
25/11/2006	25	100%	100%	42%	100%	100%	100%	50%	100%	100%	54%	84%	88%	79%	0%
26/11/2006	26	100%	100%	100%	100%	100%	100%	100%	100%	100%	0%	91%	88%	100%	0%
27/11/2006	27	100%	87%	58%	96%	96%	79%	54%	100%	67%	12%	75%	88%	71%	0%
28/11/2006	28	100%	71%	0%	100%	100%	71%	29%	87%	100%	37%	72%	88%	100%	0%
29/11/2006	29	100%	25%	0%	100%	100%	87%	58%	92%	92%	100%	75%	88%	75%	0%
30/11/2006	30	54%	42%	0%	79%	100%	92%	54%	83%	79%	75%	68%	88%	92%	0%
Average reliability		90%	85%	70%	94%	89%	84%	87%	95%	77%	79%	82%	88%	56%	0%



## Site Reliability and Availability

November 2006

Colour coding limits: ≥TARGET: 88%

≥90% OF TARGET: 79%

### WLCG Tier-1s + CERN

Data from SAM monitoring. Site **reliability** and **availability** as agreed in WLCG MB on 11 July 2006 (*scheduled interruptions are excluded when calculating reliability*)

#### Availability

Date		CERN-PROD	FZK-LCG2	IN2P3-CC	INFN-T1	RAL-LCG2	SARA-MATRIX	TRIUMF-LCG2	Taiwan-LCG2	USCMS-FNAL WC1	PIC	average availability	target	BNL-LCG2	NDGF
01/11/2006	1	100%	54%	58%	100%	13%	0%	100%	100%	100%	100%	75%	88%	100%	0%
02/11/2006	2	100%	92%	92%	96%	71%	46%	100%	100%	100%	100%	88%	88%	67%	0%
03/11/2006	3	100%	17%	13%	100%	100%	100%	100%	100%	13%	100%	69%	88%	13%	0%
04/11/2006	4	100%	96%	79%	100%	100%	100%	100%	100%	46%	100%	85%	88%	17%	0%
05/11/2006	5	100%	100%	25%	100%	100%	100%	100%	100%	63%	100%	81%	88%	4%	0%
06/11/2006	6	100%	100%	92%	100%	100%	100%	100%	100%	79%	100%	89%	88%	8%	0%
07/11/2006	7	100%	100%	100%	58%	83%	92%	100%	100%	42%	100%	87%	88%	83%	0%
08/11/2006	8	100%	88%	92%	83%	100%	33%	67%	100%	0%	100%	76%	88%	71%	0%
09/11/2006	9	100%	63%	88%	96%	100%	100%	83%	100%	0%	100%	82%	88%	67%	0%
10/11/2006	10	100%	88%	100%	96%	100%	100%	100%	100%	17%	100%	87%	88%	54%	0%
11/11/2006	11	100%	100%	100%	100%	58%	96%	100%	100%	88%	100%	94%	88%	92%	0%
12/11/2006	12	100%	100%	100%	100%	0%	100%	100%	100%	100%	100%	91%	88%	100%	0%
13/11/2006	13	100%	100%	100%	100%	100%	100%	100%	100%	100%	100%	100%	88%	100%	0%
14/11/2006	14	38%	100%	88%	100%	100%	54%	100%	100%	100%	100%	89%	88%	100%	0%
15/11/2006	15	92%	83%	75%	100%	54%	92%	100%	88%	88%	79%	85%	88%	88%	0%
16/11/2006	16	100%	29%	100%	100%	25%	0%	88%	100%	46%	38%	57%	88%	0%	0%
17/11/2006	17	75%	71%	83%	88%	92%	0%	88%	100%	75%	88%	69%	88%	0%	0%
18/11/2006	18	38%	100%	42%	100%	100%	0%	100%	100%	100%	54%	67%	88%	0%	0%
19/11/2006	19	58%	100%	67%	100%	100%	0%	100%	100%	100%	0%	66%	88%	0%	0%
20/11/2006	20	67%	100%	58%	100%	100%	25%	96%	25%	100%	46%	65%	88%	0%	0%
21/11/2006	21	100%	100%	42%	25%	100%	100%	100%	75%	100%	100%	77%	88%	0%	0%
22/11/2006	22	100%	100%	8%	42%	100%	38%	100%	100%	100%	100%	72%	88%	0%	0%
23/11/2006	23	88%	100%	0%	100%	88%	42%	58%	75%	96%	92%	75%	88%	88%	0%
24/11/2006	24	100%	100%	25%	100%	100%	79%	79%	92%	100%	100%	89%	88%	100%	0%
25/11/2006	25	100%	100%	42%	100%	100%	100%	50%	100%	100%	54%	84%	88%	79%	0%
26/11/2006	26	100%	100%	100%	100%	100%	100%	100%	100%	100%	0%	91%	88%	100%	0%
27/11/2006	27	100%	88%	58%	96%	96%	79%	54%	100%	67%	13%	75%	88%	71%	0%
28/11/2006	28	100%	71%	0%	100%	92%	71%	29%	88%	100%	38%	72%	88%	100%	0%
29/11/2006	29	100%	25%	0%	100%	100%	88%	58%	92%	92%	100%	75%	88%	75%	0%
30/11/2006	30	54%	42%	0%	79%	92%	92%	54%	83%	79%	67%	67%	88%	92%	0%
Average availability		90%	84%	61%	92%	85%	68%	87%	94%	76%	79%	79%	88%	56%	0%

Average of 8 best sites	
availability	86%
reliability	88%

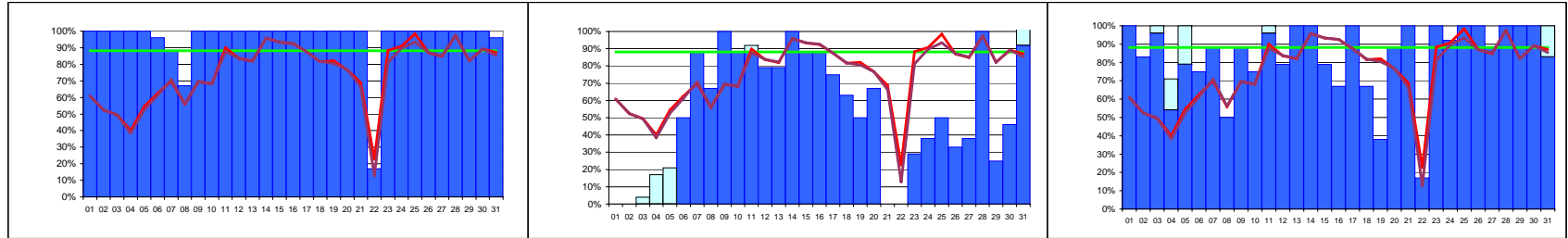


# Availability of WLCG Tier-1 Sites + CERN October 2006

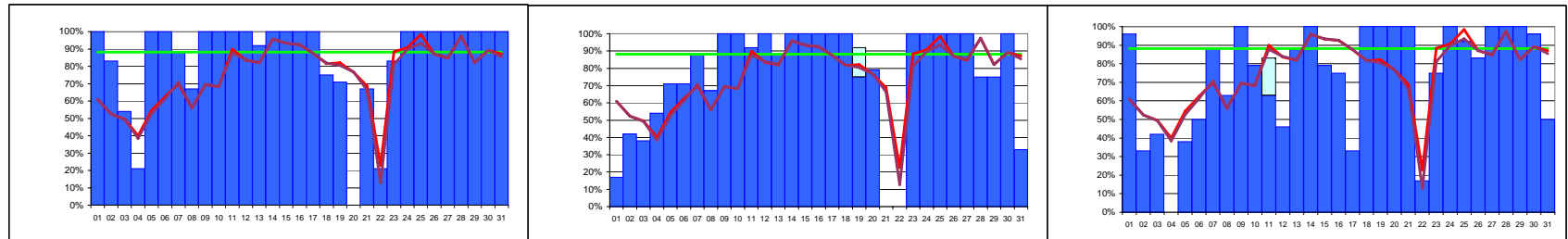
As in September the best result each day of the OPS and Dteam VO's is used.

Data from SAM monitoring. Site reliability and availability as agreed in WLCG MB on 11 July 2006 (scheduled interruptions are excluded when calculating reliability)

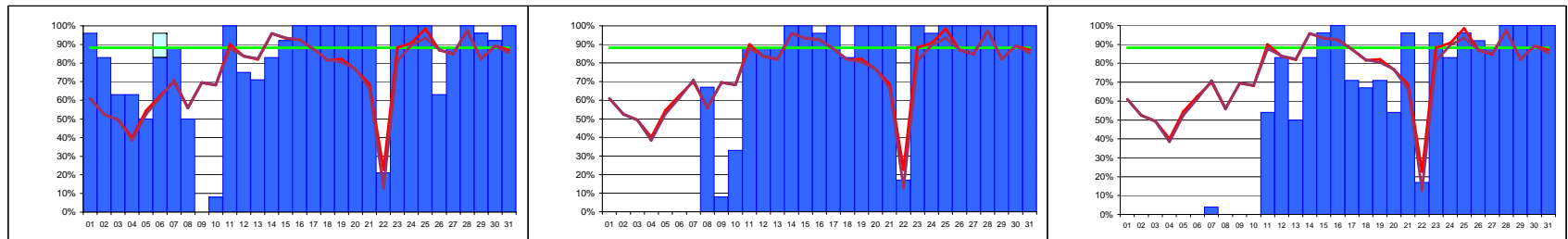
**legend:** tests passed (blue bar), scheduled down (light blue bar), availability (red line), reliability (purple line), target (green line) 88%  
 average (all sites): availability 75%, reliability 76%  
 average (8 best sites): availability 80%, reliability 81%  
 site average colour coding: < 90% of target (red), ≥ 90% of target (orange), ≥ target (green)



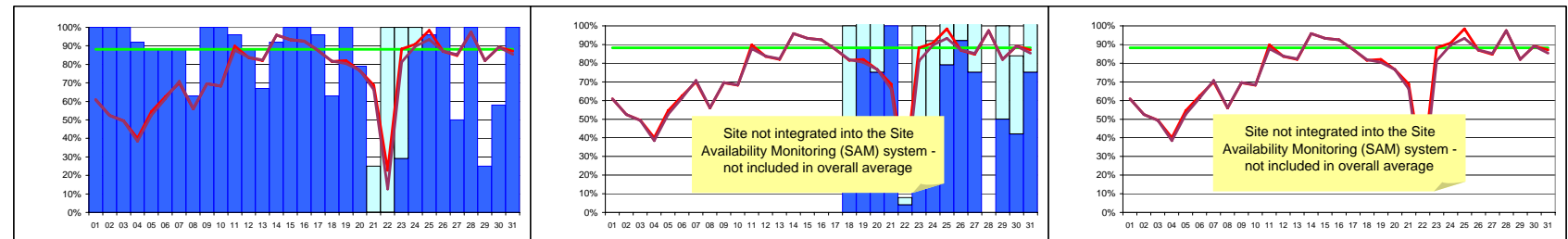
**CERN-PROD** avail: 96% reliability: 96%     
 **FZK-LCG2** avail: 52% reliability: 54%     
 **IN2P3-CC** avail: 83% reliability: 85%



**INFN-T1** avail: 85% reliability: 85%     
 **RAL-LCG2** avail: 76% reliability: 77%     
 **SARA-MATRIX** avail: 74% reliability: 74%



**TRIUMF-LCG2** avail: 80% reliability: 80%     
 **Taiwan-LCG2** avail: 67% reliability: 66%     
 **USCMS-FNAL-WC1** avail: 55% reliability: 55%



**PIC** avail: 79% reliability: 85%     
 **BNL** avail: 27% reliability: 27%     
 **NDGF** avail: n/a reliability: n/a



## Site Reliability and Availability

October 2006

Colour coding limits: ≥TARGET:

88%

≥90% OF TARGET:

79%

### WLCG Tier-1s + CERN

Data from SAM monitoring. Site **reliability and** availability as agreed in WLCG MB on 11 July 2006 (*scheduled interruptions are excluded when calculating reliability*)

As in September the best result each day of the OPS and Dteam VOs is used.

OPS VO is used when the cell has a yellow background.

#### Reliability

Date		CERN-PROD	FZK-LCG2	IN2P3-CC	INFN-T1	RAL-LCG2	SARA-MATRIX	TRIUMF-LCG2	Taiwan-LCG2	USCMS-FNAL WC1	PIC	average reliability	target	BNL-LCG2	NDGF
01/10/2006	1	100%	0%	100%	100%	17%	96%	96%	0%	0%	100%	61%	88%	0%	0%
02/10/2006	2	100%	0%	83%	83%	42%	33%	83%	0%	0%	100%	52%	88%	0%	0%
03/10/2006	3	100%	0%	100%	54%	37%	42%	62%	0%	0%	100%	50%	88%	0%	0%
04/10/2006	4	100%	0%	71%	21%	54%	0%	62%	0%	0%	92%	40%	88%	0%	0%
05/10/2006	5	100%	0%	100%	100%	71%	37%	50%	0%	0%	87%	55%	88%	0%	0%
06/10/2006	6	96%	50%	75%	100%	71%	50%	96%	0%	0%	87%	63%	88%	0%	0%
07/10/2006	7	87%	87%	87%	87%	87%	87%	87%	0%	4%	87%	70%	88%	0%	0%
08/10/2006	8	67%	67%	50%	67%	67%	62%	50%	67%	0%	62%	56%	88%	0%	0%
09/10/2006	9	100%	100%	87%	100%	100%	100%	0%	8%	0%	100%	70%	88%	0%	0%
10/10/2006	10	100%	87%	75%	100%	100%	79%	8%	33%	0%	100%	68%	88%	0%	0%
11/10/2006	11	100%	87%	100%	100%	92%	83%	100%	87%	54%	96%	90%	88%	0%	0%
12/10/2006	12	100%	79%	79%	100%	100%	46%	75%	87%	83%	87%	84%	88%	0%	0%
13/10/2006	13	100%	79%	100%	92%	87%	87%	71%	87%	50%	67%	82%	88%	0%	0%
14/10/2006	14	100%	100%	100%	100%	100%	100%	83%	100%	83%	92%	96%	88%	0%	0%
15/10/2006	15	100%	87%	79%	100%	100%	79%	92%	100%	96%	100%	93%	88%	0%	0%
16/10/2006	16	100%	87%	67%	100%	100%	75%	100%	96%	100%	100%	93%	88%	0%	0%
17/10/2006	17	100%	75%	100%	100%	100%	33%	100%	100%	71%	96%	88%	88%	0%	0%
18/10/2006	18	100%	62%	67%	75%	100%	100%	100%	83%	67%	62%	82%	88%	50%	0%
19/10/2006	19	100%	50%	37%	71%	92%	100%	100%	100%	71%	100%	82%	88%	87%	0%
20/10/2006	20	100%	67%	87%	0%	79%	100%	100%	100%	54%	79%	77%	88%	75%	0%
21/10/2006	21	100%	0%	100%	67%	0%	100%	100%	100%	96%	25%	69%	88%	100%	0%
22/10/2006	22	17%	0%	17%	21%	0%	17%	21%	17%	17%	100%	23%	88%	4%	0%
23/10/2006	23	100%	29%	100%	83%	100%	75%	100%	100%	96%	100%	88%	88%	50%	0%
24/10/2006	24	100%	37%	92%	100%	100%	100%	100%	96%	83%	100%	91%	88%	46%	0%
25/10/2006	25	100%	100%	100%	100%	100%	92%	100%	100%	96%	96%	98%	88%	79%	0%
26/10/2006	26	100%	33%	100%	100%	100%	83%	62%	100%	92%	100%	87%	88%	92%	0%
27/10/2006	27	100%	37%	87%	100%	100%	100%	87%	100%	87%	50%	85%	88%	75%	0%
28/10/2006	28	100%	100%	100%	100%	75%	100%	100%	100%	100%	100%	98%	88%	0%	0%
29/10/2006	29	100%	25%	100%	100%	75%	100%	96%	100%	100%	25%	82%	88%	50%	0%
30/10/2006	30	100%	46%	100%	100%	100%	96%	92%	100%	100%	58%	89%	88%	42%	0%
31/10/2006	31	96%	92%	100%	100%	33%	50%	100%	100%	100%	100%	87%	88%	75%	0%
Average reliability		96%	54%	85%	85%	77%	74%	80%	66%	55%	85%	76%	88%	27%	0%



## Site Reliability and Availability

October 2006

Colour coding limits: ≥TARGET: 88%

≥90% OF TARGET: 79%

### WLCG Tier-1s + CERN

Data from SAM monitoring. Site reliability and availability as agreed in WLCG MB on 11 July 2006 (scheduled interruptions are excluded when calculating reliability)

#### Availability

Date		CERN-PROD	FZK-LCG2	IN2P3-CC	INFN-T1	RAL-LCG2	SARA-MATRIX	TRIUMF-LCG2	Taiwan-LCG2	USCMS-FNAL WC1	PIC	average availability	target	BNL-LCG2	NDGF
01/10/2006	1	100%	0%	100%	100%	17%	96%	96%	0%	0%	100%	61%	88%	0%	0%
02/10/2006	2	100%	0%	83%	83%	42%	33%	83%	0%	0%	100%	52%	88%	0%	0%
03/10/2006	3	100%	0%	96%	54%	38%	42%	63%	0%	0%	100%	49%	88%	0%	0%
04/10/2006	4	100%	0%	54%	21%	54%	0%	63%	0%	0%	92%	38%	88%	0%	0%
05/10/2006	5	100%	0%	79%	100%	71%	38%	50%	0%	0%	88%	53%	88%	0%	0%
06/10/2006	6	96%	50%	75%	100%	71%	50%	83%	0%	0%	88%	61%	88%	0%	0%
07/10/2006	7	88%	88%	88%	88%	88%	88%	88%	0%	4%	88%	71%	88%	0%	0%
08/10/2006	8	67%	67%	50%	67%	67%	63%	50%	67%	0%	63%	56%	88%	0%	0%
09/10/2006	9	100%	100%	88%	100%	100%	100%	0%	8%	0%	100%	70%	88%	0%	0%
10/10/2006	10	100%	88%	75%	100%	100%	79%	8%	33%	0%	100%	68%	88%	0%	0%
11/10/2006	11	100%	88%	96%	100%	92%	63%	100%	88%	54%	96%	88%	88%	0%	0%
12/10/2006	12	100%	79%	79%	100%	100%	46%	75%	88%	83%	88%	84%	88%	0%	0%
13/10/2006	13	100%	79%	100%	92%	88%	88%	71%	88%	50%	67%	82%	88%	0%	0%
14/10/2006	14	100%	100%	100%	100%	100%	100%	83%	100%	83%	92%	96%	88%	0%	0%
15/10/2006	15	100%	88%	79%	100%	100%	79%	92%	100%	96%	100%	93%	88%	0%	0%
16/10/2006	16	100%	88%	67%	100%	100%	75%	100%	96%	100%	100%	93%	88%	0%	0%
17/10/2006	17	100%	75%	100%	100%	100%	33%	100%	100%	71%	96%	88%	88%	0%	0%
18/10/2006	18	100%	63%	67%	75%	100%	100%	100%	83%	67%	63%	82%	88%	50%	0%
19/10/2006	19	100%	50%	38%	71%	75%	100%	100%	100%	71%	100%	81%	88%	88%	0%
20/10/2006	20	100%	67%	88%	0%	79%	100%	100%	100%	54%	79%	77%	88%	75%	0%
21/10/2006	21	100%	0%	100%	67%	0%	100%	100%	100%	96%	0%	66%	88%	100%	0%
22/10/2006	22	17%	0%	17%	21%	0%	17%	21%	17%	17%	0%	13%	88%	4%	0%
23/10/2006	23	100%	29%	100%	83%	100%	75%	100%	100%	96%	29%	81%	88%	50%	0%
24/10/2006	24	100%	38%	92%	100%	100%	100%	100%	96%	83%	88%	90%	88%	46%	0%
25/10/2006	25	100%	50%	100%	100%	100%	92%	100%	100%	96%	96%	93%	88%	79%	0%
26/10/2006	26	100%	33%	100%	100%	100%	83%	63%	100%	92%	100%	87%	88%	92%	0%
27/10/2006	27	100%	38%	88%	100%	100%	100%	88%	100%	88%	50%	85%	88%	75%	0%
28/10/2006	28	100%	100%	100%	100%	75%	100%	100%	100%	100%	100%	98%	88%	0%	0%
29/10/2006	29	100%	25%	100%	100%	75%	100%	96%	100%	100%	25%	82%	88%	50%	0%
30/10/2006	30	100%	46%	100%	100%	100%	96%	92%	100%	100%	58%	89%	88%	42%	0%
31/10/2006	31	96%	92%	83%	100%	33%	50%	100%	100%	100%	100%	85%	88%	75%	0%
<b>Average availability</b>		<b>96%</b>	<b>52%</b>	<b>83%</b>	<b>85%</b>	<b>76%</b>	<b>74%</b>	<b>80%</b>	<b>67%</b>	<b>55%</b>	<b>79%</b>	<b>75%</b>	<b>88%</b>	<b>27%</b>	<b>0%</b>

Average of 8 best sites	
availability	80%
reliability	81%

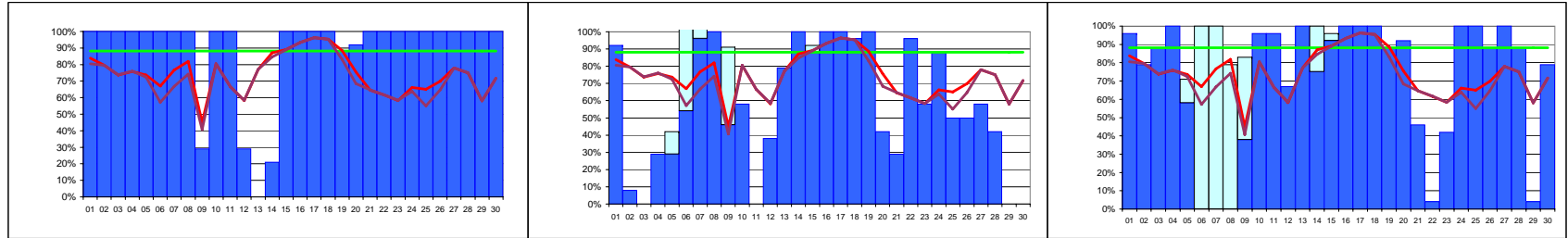


# Availability of WLCG Tier-1 Sites + CERN September 2006

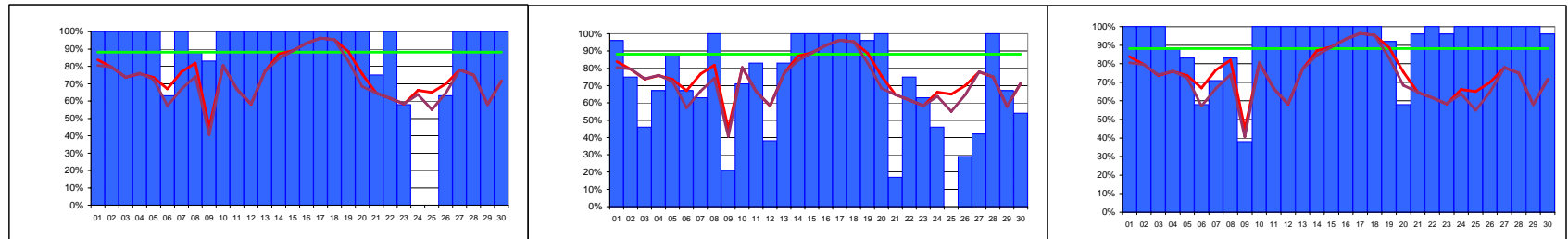
The VO used for the tests was being changed during September from dTeam to OPS. This month only the best result each day for either of these two VOs is used.

Data from SAM monitoring. Site reliability and availability as agreed in WLCG MB on 11 July 2006 (scheduled interruptions are excluded when calculating reliability)

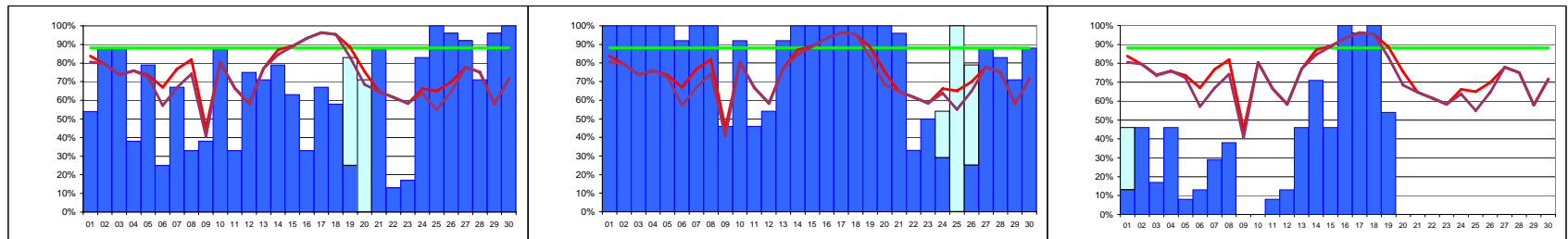
**legend:** tests passed (blue bar), scheduled down (light blue bar), availability (red line), reliability (purple line), target (green line) 88%  
 average (all sites): availability 72%, reliability 74%  
 average (8 best sites): availability 80%, reliability 83%  
 site average colour coding: < 90% of target (red), ≥ 90% of target (orange), ≥ target (green)



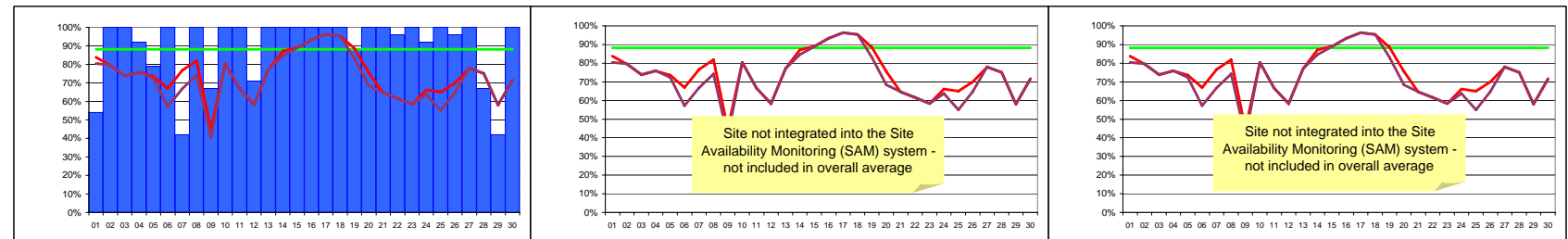
**CERN-PROD** avail: 89% reliability: 89%     
 **FZK-LCG2** avail: 58% reliability: 57%     
 **IN2P3-CC** avail: 71% reliability: 83%



**INFN-T1** avail: 88% reliability: 88%     
 **RAL-LCG2** avail: 70% reliability: 69%     
 **SARA-MATRIX** avail: 92% reliability: 92%



**TRIUMF-LCG2** avail: 62% reliability: 66%     
 **Taiwan-LCG2** avail: 80% reliability: 85%     
 **USCMS-FNAL-WC1** avail: 25% reliability: 26%



**PIC** avail: 90% reliability: 90%     
**BNL** avail: n/a reliability: n/a     
**NDGF** avail: n/a reliability: n/a



## Site Reliability and Availability

September 2006

Colour coding limits:  $\geq$ TARGET: 88%

$\geq$ 90% OF TARGET: 79%

### WLCG Tier-1s + CERN

Data from SAM monitoring. Site reliability and availability as agreed in WLCG MB on 11 July 2006 (scheduled interruptions are excluded when calculating reliability)

The VO used for the tests was being changed during September from dTeam to OPS. This month only the best result each day for either of these two VOs is used.

OPS VO is used when the cell has a yellow background.

#### Reliability

Date		CERN-PROD	FZK-LCG2	IN2P3-CC	INFN-T1	RAL-LCG2	SARA-MATRIX	TRIUMF-LCG2	Taiwan-LCG2	USCMS-FNAL WC1	PIC	average reliability	target	BNL-LCG2	NDGF
01/09/2006	1	100%	92%	96%	100%	96%	100%	54%	100%	46%	54%	84%	88%	0%	0%
02/09/2006	2	100%	8%	79%	100%	75%	100%	87%	100%	46%	100%	80%	88%	0%	0%
03/09/2006	3	100%	0%	87%	100%	46%	100%	87%	100%	17%	100%	74%	88%	0%	0%
04/09/2006	4	100%	29%	100%	100%	67%	87%	37%	100%	46%	92%	76%	88%	0%	0%
05/09/2006	5	100%	29%	71%	100%	87%	83%	79%	100%	8%	79%	74%	88%	0%	0%
06/09/2006	6	100%	54%	100%	62%	67%	58%	25%	92%	12%	100%	67%	88%	0%	0%
07/09/2006	7	100%	96%	100%	100%	62%	71%	67%	100%	29%	42%	77%	88%	0%	0%
08/09/2006	8	100%	100%	79%	87%	100%	83%	33%	100%	37%	100%	82%	88%	0%	0%
09/09/2006	9	29%	46%	83%	83%	21%	37%	37%	46%	0%	67%	45%	88%	0%	0%
10/09/2006	10	100%	58%	96%	100%	71%	100%	87%	92%	0%	100%	80%	88%	0%	0%
11/09/2006	11	100%	0%	96%	100%	83%	100%	33%	46%	8%	100%	67%	88%	0%	0%
12/09/2006	12	29%	37%	67%	100%	37%	100%	75%	54%	12%	71%	58%	88%	0%	0%
13/09/2006	13	0%	79%	100%	100%	83%	100%	71%	92%	46%	100%	77%	88%	0%	0%
14/09/2006	14	21%	100%	100%	100%	100%	100%	79%	100%	71%	100%	87%	88%	0%	0%
15/09/2006	15	100%	87%	96%	100%	100%	100%	62%	100%	46%	100%	89%	88%	0%	0%
16/09/2006	16	100%	100%	100%	100%	100%	100%	33%	100%	100%	100%	93%	88%	0%	0%
17/09/2006	17	100%	100%	100%	100%	100%	100%	67%	100%	96%	100%	96%	88%	0%	0%
18/09/2006	18	100%	96%	100%	100%	100%	100%	58%	100%	100%	100%	95%	88%	0%	0%
19/09/2006	19	87%	100%	87%	100%	96%	92%	83%	100%	54%	87%	89%	88%	0%	0%
20/09/2006	20	92%	42%	92%	100%	100%	58%	71%	100%	0%	100%	76%	88%	0%	0%
21/09/2006	21	100%	29%	46%	75%	17%	96%	87%	96%	0%	100%	65%	88%	0%	0%
22/09/2006	22	100%	96%	4%	100%	75%	100%	12%	33%	0%	96%	62%	88%	0%	0%
23/09/2006	23	100%	58%	42%	58%	62%	96%	17%	50%	0%	100%	58%	88%	0%	0%
24/09/2006	24	100%	87%	100%	0%	46%	100%	83%	54%	0%	92%	66%	88%	0%	0%
25/09/2006	25	100%	50%	100%	0%	0%	100%	100%	100%	0%	100%	65%	88%	0%	0%
26/09/2006	26	100%	50%	87%	62%	29%	100%	96%	79%	0%	96%	70%	88%	0%	0%
27/09/2006	27	100%	58%	100%	100%	42%	100%	92%	87%	0%	100%	78%	88%	0%	0%
28/09/2006	28	100%	42%	87%	100%	100%	100%	71%	83%	0%	67%	75%	88%	0%	0%
29/09/2006	29	100%	0%	4%	100%	67%	100%	96%	71%	0%	42%	58%	88%	0%	0%
30/09/2006	30	100%	0%	79%	100%	54%	96%	100%	87%	0%	100%	72%	88%	0%	0%
Average reliability		89%	57%	83%	88%	69%	92%	66%	85%	26%	90%	74%	88%	0%	0%



## Site Reliability and Availability

September 2006

Colour coding limits: **≥TARGET:** 88%

**≥90% OF TARGET:** 79%

### WLCG Tier-1s + CERN

Data from SAM monitoring. Site **reliability and** availability as agreed in WLCG MB on 11 July 2006 (**scheduled interruptions are excluded when calculating reliability**)

The VO used for the tests was being changed during September from dTeam to OPS. This month only the best result each day for either of these two VOs is used.

OPS VO is used when the cell has a yellow background.

#### Availability

Date		CERN-PROD	FZK-LCG2	IN2P3-CC	INFN-T1	RAL-LCG2	SARA-MATRIX	TRIUMF-LCG2	Taiwan-LCG2	USCMS-FNAL WC1	PIC	average availability	target	BNL-LCG2	NDGF
01/09/2006	1	100%	92%	96%	100%	96%	100%	54%	100%	13%	54%	81%	88%	0%	0%
02/09/2006	2	100%	8%	79%	100%	75%	100%	88%	100%	46%	100%	80%	88%	0%	0%
03/09/2006	3	100%	0%	88%	100%	46%	100%	88%	100%	17%	100%	74%	88%	0%	0%
04/09/2006	4	100%	29%	100%	100%	67%	88%	38%	100%	46%	92%	76%	88%	0%	0%
05/09/2006	5	100%	29%	58%	100%	88%	83%	79%	100%	8%	79%	72%	88%	0%	0%
06/09/2006	6	100%	54%	0%	63%	67%	58%	25%	92%	13%	100%	57%	88%	0%	0%
07/09/2006	7	100%	96%	0%	100%	63%	71%	67%	100%	29%	42%	67%	88%	0%	0%
08/09/2006	8	100%	100%	0%	88%	100%	83%	33%	100%	38%	100%	74%	88%	0%	0%
09/09/2006	9	29%	46%	38%	83%	21%	38%	38%	46%	0%	67%	41%	88%	0%	0%
10/09/2006	10	100%	58%	96%	100%	71%	100%	88%	92%	0%	100%	81%	88%	0%	0%
11/09/2006	11	100%	0%	96%	100%	83%	100%	33%	46%	8%	100%	67%	88%	0%	0%
12/09/2006	12	29%	38%	67%	100%	38%	100%	75%	54%	13%	71%	59%	88%	0%	0%
13/09/2006	13	0%	79%	100%	100%	83%	100%	71%	92%	46%	100%	77%	88%	0%	0%
14/09/2006	14	21%	100%	75%	100%	100%	100%	79%	100%	71%	100%	85%	88%	0%	0%
15/09/2006	15	100%	88%	92%	100%	100%	100%	63%	100%	46%	100%	89%	88%	0%	0%
16/09/2006	16	100%	100%	100%	100%	100%	100%	33%	100%	100%	100%	93%	88%	0%	0%
17/09/2006	17	100%	100%	100%	100%	100%	100%	67%	100%	96%	100%	96%	88%	0%	0%
18/09/2006	18	100%	96%	100%	100%	100%	100%	58%	100%	100%	100%	95%	88%	0%	0%
19/09/2006	19	88%	100%	88%	100%	96%	92%	25%	100%	54%	88%	83%	88%	0%	0%
20/09/2006	20	92%	42%	92%	100%	100%	58%	0%	100%	0%	100%	68%	88%	0%	0%
21/09/2006	21	100%	29%	46%	75%	17%	96%	88%	96%	0%	100%	65%	88%	0%	0%
22/09/2006	22	100%	96%	4%	100%	75%	100%	13%	33%	0%	96%	62%	88%	0%	0%
23/09/2006	23	100%	58%	42%	58%	63%	96%	17%	50%	0%	100%	58%	88%	0%	0%
24/09/2006	24	100%	88%	100%	0%	46%	100%	83%	29%	0%	92%	64%	88%	0%	0%
25/09/2006	25	100%	50%	100%	0%	0%	100%	100%	0%	0%	100%	55%	88%	0%	0%
26/09/2006	26	100%	50%	88%	63%	29%	100%	96%	25%	0%	96%	65%	88%	0%	0%
27/09/2006	27	100%	58%	100%	100%	42%	100%	92%	88%	0%	100%	78%	88%	0%	0%
28/09/2006	28	100%	42%	88%	100%	88%	100%	71%	83%	0%	67%	75%	88%	0%	0%
29/09/2006	29	100%	0%	4%	100%	67%	100%	96%	71%	0%	42%	58%	88%	0%	0%
30/09/2006	30	100%	0%	79%	100%	54%	96%	100%	88%	0%	100%	72%	88%	0%	0%
<b>Average availability</b>		<b>89%</b>	<b>58%</b>	<b>71%</b>	<b>88%</b>	<b>70%</b>	<b>92%</b>	<b>62%</b>	<b>80%</b>	<b>25%</b>	<b>90%</b>	<b>72%</b>	<b>88%</b>	<b>0%</b>	<b>0%</b>

Average of 8 best sites	
availability	80%
reliability	83%



# Availability of WLCG Tier-1 Sites + CERN August 2006

All sites assumed up while SAM had problems on 1, 3, 4 August

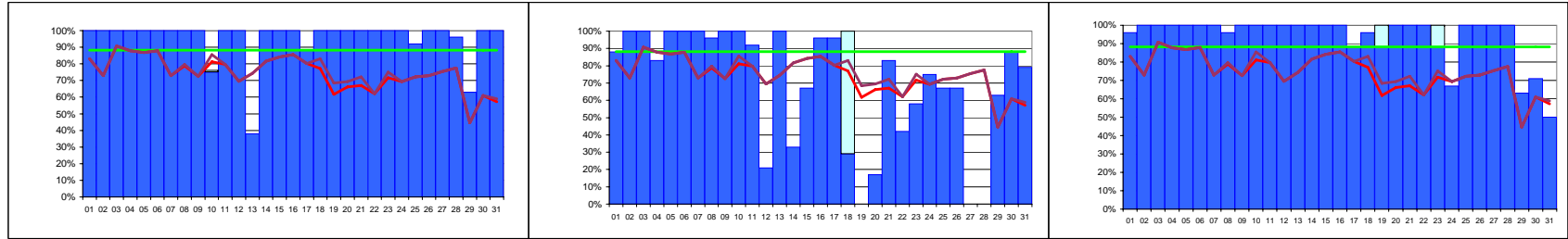
Data from SAM monitoring. Site availability and reliability as agreed in WLCG MB on 11 July 2006 (scheduled interruptions are excluded when calculating reliability)

legend: tests passed (blue bar), scheduled down (light blue bar)

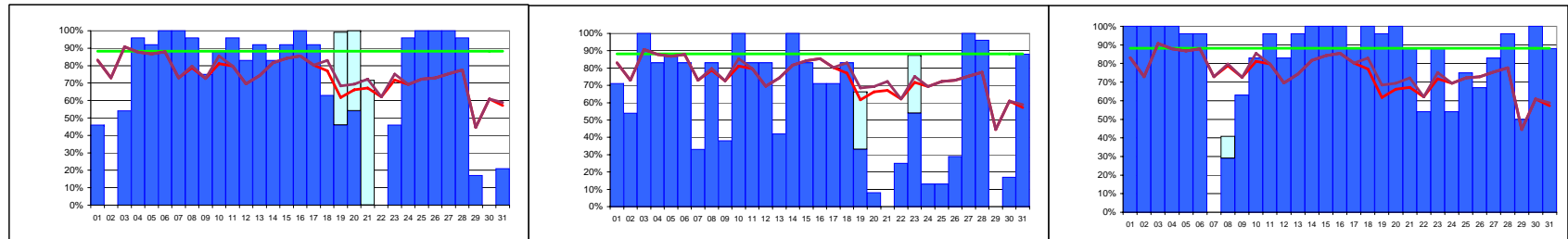
average (all sites): availability 74%, reliability 75%, target 88%

average (8 best sites): availability 85%, reliability 86%

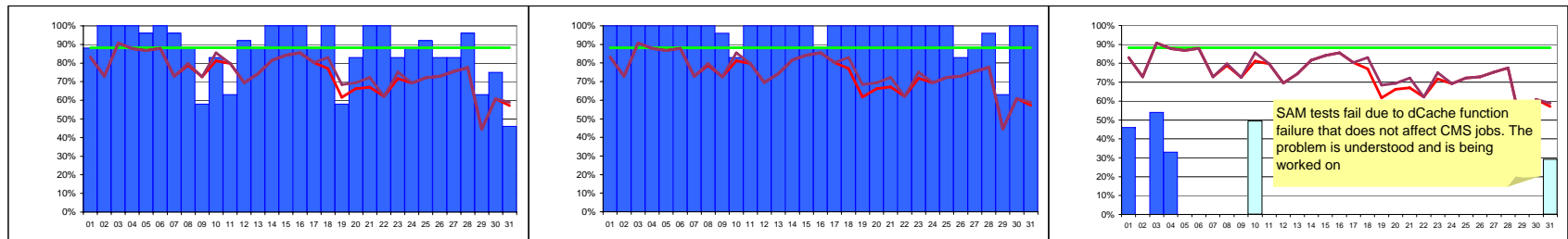
site average colour coding: < 90% of target (red), ≥ 90% of target (orange), ≥ target (green)



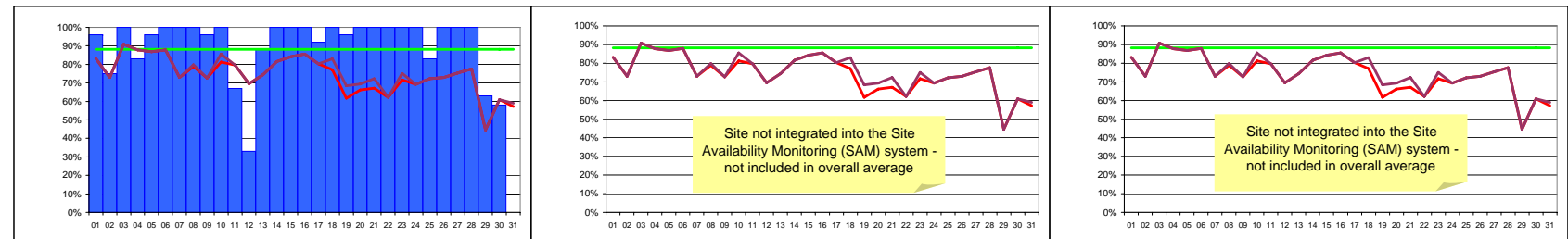
**CERN-PROD** avail: 95% reliability: 95%      **FZK-LCG2** avail: 69% reliability: 71%      **IN2P3-CC** avail: 94% reliability: 94%



**INFN-T1** avail: 69% reliability: 73%      **RAL-LCG2** avail: 59% reliability: 60%      **SARA-MATRIX** avail: 83% reliability: 83%



**TRIUMF-LCG2** avail: 87% reliability: 87%      **Taiwan-LCG2** avail: 97% reliability: 97%      **USCMS-FNAL-WC1** avail: 4% reliability: 4%



**PIC** avail: 88% reliability: 88%      **BNL** avail: n/a reliability: 0%      **NDGF** avail: n/a reliability: 0%

SAM tests fail due to dCache function failure that does not affect CMS jobs. The problem is understood and is being worked on

Site not integrated into the Site Availability Monitoring (SAM) system - not included in overall average

Site not integrated into the Site Availability Monitoring (SAM) system - not included in overall average



## SAM - Service Availability Monitoring Data

August 2006

Colour coding limits: **≥TARGET:** 88%

**≥90% OF TARGET:** 79%

### WLCG Tier-1s + CERN

Data from SAM monitoring. Site *availability* and *reliability* as agreed in WLCG MB on 11 July 2006 (*scheduled interruptions are excluded when calculating reliability*)

Date		CERN-PROD	FZK-LCG2	IN2P3-CC	INFN-T1	RAL-LCG2	SARA-MATRIX	TRIUMF-LCG2	Taiwan-LCG2	USCMS-FNAL WC1	PIC	average availability	target	BNL-LCG2	NDGF
01/08/2006	1	100%	88%	96%	46%	71%	100%	88%	100%	46%	96%	83%	88%	0%	0%
02/08/2006	2	100%	100%	100%	0%	54%	100%	100%	100%	0%	75%	73%	88%	0%	0%
03/08/2006	3	100%	100%	100%	54%	100%	100%	100%	100%	54%	100%	91%	88%	0%	0%
04/08/2006	4	100%	83%	100%	96%	83%	100%	100%	100%	33%	83%	88%	88%	0%	0%
05/08/2006	5	100%	100%	100%	92%	88%	96%	96%	100%	0%	96%	87%	88%	0%	0%
06/08/2006	6	100%	100%	100%	100%	83%	96%	100%	100%	0%	100%	88%	88%	0%	0%
07/08/2006	7	100%	100%	100%	100%	33%	0%	96%	100%	0%	100%	73%	88%	0%	0%
08/08/2006	8	100%	96%	96%	96%	83%	29%	88%	100%	0%	100%	79%	88%	0%	0%
09/08/2006	9	100%	100%	100%	75%	38%	63%	58%	96%	0%	96%	73%	88%	0%	0%
10/08/2006	10	75%	100%	100%	88%	100%	83%	83%	83%	0%	100%	81%	88%	0%	0%
11/08/2006	11	100%	92%	100%	96%	83%	96%	63%	100%	0%	67%	80%	88%	0%	0%
12/08/2006	12	100%	21%	100%	83%	83%	83%	92%	100%	0%	33%	70%	88%	0%	0%
13/08/2006	13	38%	100%	100%	92%	42%	96%	88%	100%	0%	88%	74%	88%	0%	0%
14/08/2006	14	100%	33%	100%	83%	100%	100%	100%	100%	0%	100%	82%	88%	0%	0%
15/08/2006	15	100%	67%	100%	92%	83%	100%	100%	100%	0%	100%	84%	88%	0%	0%
16/08/2006	16	100%	96%	100%	100%	71%	100%	100%	88%	0%	100%	86%	88%	0%	0%
17/08/2006	17	88%	96%	88%	92%	71%	88%	88%	100%	0%	92%	80%	88%	0%	0%
18/08/2006	18	100%	29%	96%	63%	83%	100%	100%	100%	0%	100%	77%	88%	0%	0%
19/08/2006	19	100%	0%	88%	46%	33%	96%	58%	100%	0%	96%	62%	88%	0%	0%
20/08/2006	20	100%	17%	100%	54%	8%	100%	83%	100%	0%	100%	66%	88%	0%	0%
21/08/2006	21	100%	83%	100%	0%	0%	88%	100%	100%	0%	100%	67%	88%	0%	0%
22/08/2006	22	100%	42%	100%	0%	25%	54%	100%	100%	0%	100%	62%	88%	0%	0%
23/08/2006	23	100%	58%	88%	46%	54%	88%	83%	100%	0%	100%	72%	88%	0%	0%
24/08/2006	24	100%	75%	67%	96%	13%	54%	88%	100%	0%	100%	69%	88%	0%	0%
25/08/2006	25	92%	67%	100%	100%	13%	75%	92%	100%	0%	83%	72%	88%	0%	0%
26/08/2006	26	100%	67%	100%	100%	29%	67%	83%	83%	0%	100%	73%	88%	0%	0%
27/08/2006	27	100%	0%	100%	100%	100%	83%	83%	88%	0%	100%	75%	88%	0%	0%
28/08/2006	28	96%	0%	100%	96%	96%	96%	96%	96%	0%	100%	78%	88%	0%	0%
29/08/2006	29	63%	63%	63%	17%	0%	50%	63%	63%	0%	63%	45%	88%	0%	0%
30/08/2006	30	100%	88%	71%	0%	17%	100%	75%	100%	0%	58%	61%	88%	0%	0%
31/08/2006	31	100%	79%	50%	21%	88%	88%	46%	100%	0%	0%	57%	88%	0%	0%
Average availability		95%	69%	94%	69%	59%	83%	87%	97%	4%	88%	74%	88%	0%	0%



# Availability of WLCG Tier-1 Sites + CERN July 2006

29 July CERN power-off 08:00-24:00 - SAM failed through 31 July. Other sites that were active before and after power-off assumed to be fully available throughout power-off and SAM failure. Availability on 29 July before 08:00 adjusted pro-rata.

Data from SAM monitoring. Site availability and reliability as agreed in WLCG MB on 11 July 2006 (scheduled interruptions are excluded when calculating reliability)

legend:

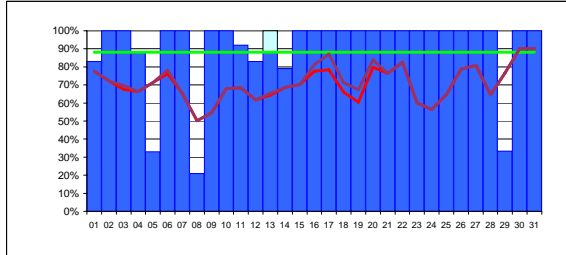
tests passed  
scheduled down



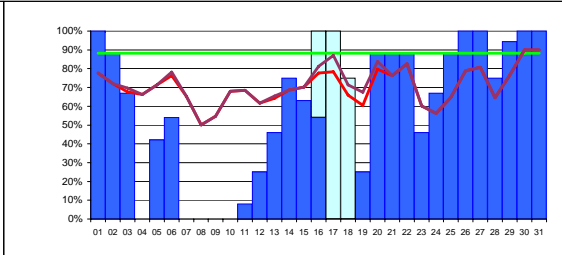
average (all sites):

availability 70%  
reliability 72%  
target 88%

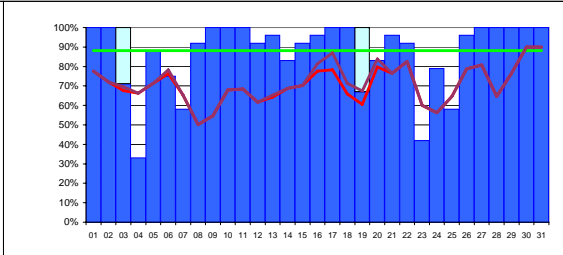
site average colour coding: < 90% of target ≥ 90% of target ≥ target



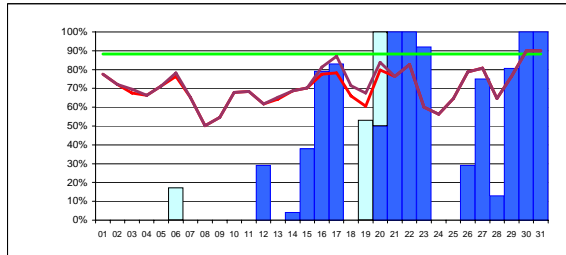
**CERN-PROD** avail: 90% reliability: 91%



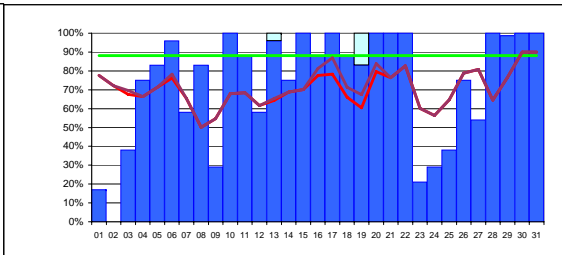
**FZK-LCG2** avail: 54% reliability: 58%



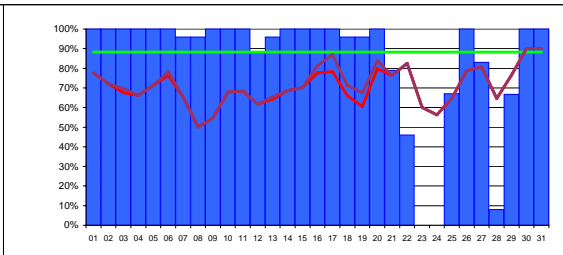
**IN2P3-CC** avail: 87% reliability: 89%



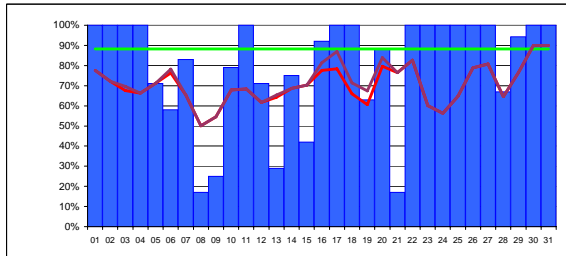
**INFN-T1** avail: 31% reliability: 33%



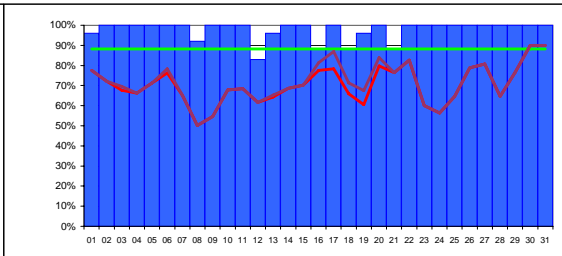
**RAL-LCG2** avail: 73% reliability: 74%



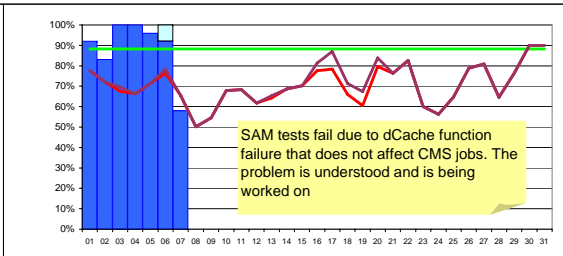
**SARA-MATRIX** avail: 84% reliability: 84%



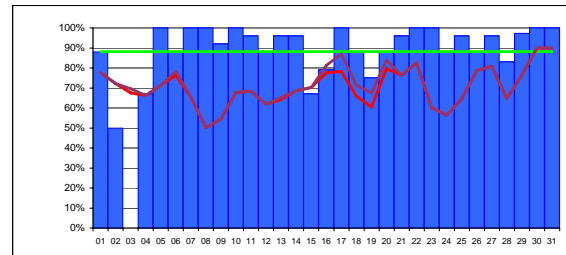
**TRIUMF-LCG2** avail: 80% reliability: 80%



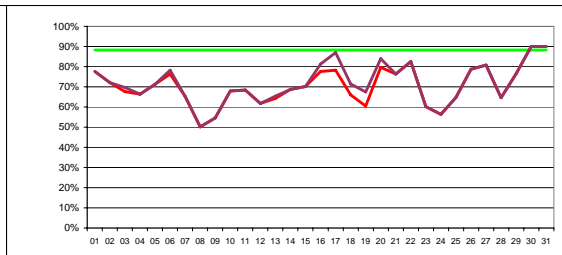
**Taiwan-LCG2** avail: 98% reliability: 98%



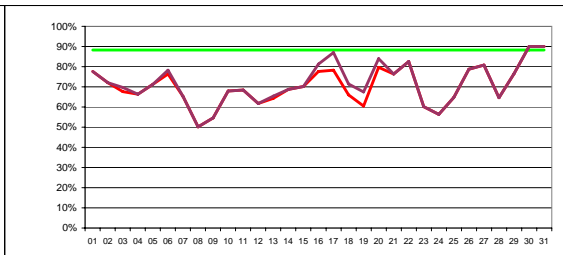
**USCMS-FNAL-WC1** avail: 20% reliability: 20%



**PIC** avail: 87% reliability: 87%



**BNL** avail: n/a reliability: 0%



**NDGF** avail: n/a reliability: 0%



## SAM - Service Availability Monitoring Data

July 2006

Colour coding limits: **≥TARGET:** 88%

**≥90% OF TARGET:** 79%

### WLCG Tier-1s + CERN

Data from SAM monitoring. Site *availability* and *reliability* as agreed in WLCG MB on 11 July 2006 (*scheduled interruptions are excluded when calculating reliability*)

Date		CERN-PROD	FZK-LCG2	IN2P3-CC	INFN-T1	RAL-LCG2	SARA-MATRIX	TRIUMF-LCG2	Taiwan-LCG2	USCMS-FNAL WC1	PIC	average availability	target	BNL-LCG2	NDGF
01/07/2006	1	83%	100%	100%	0%	17%	100%	100%	96%	92%	88%	78%	88%	0%	0%
02/07/2006	2	100%	88%	100%	0%	0%	100%	100%	100%	100%	83%	50%	72%	88%	0%
03/07/2006	3	100%	67%	71%	0%	38%	100%	100%	100%	100%	0%	68%	88%	0%	0%
04/07/2006	4	88%	0%	33%	0%	75%	100%	100%	100%	100%	67%	66%	88%	0%	0%
05/07/2006	5	33%	42%	88%	0%	83%	100%	71%	100%	96%	100%	71%	88%	0%	0%
06/07/2006	6	100%	54%	75%	0%	96%	100%	58%	100%	92%	88%	76%	88%	0%	0%
07/07/2006	7	100%	0%	58%	0%	58%	96%	83%	100%	58%	100%	65%	88%	0%	0%
08/07/2006	8	21%	0%	92%	0%	83%	96%	17%	92%	0%	100%	50%	88%	0%	0%
09/07/2006	9	100%	0%	100%	0%	29%	100%	25%	100%	0%	92%	55%	88%	0%	0%
10/07/2006	10	100%	0%	100%	0%	100%	100%	79%	100%	0%	100%	68%	88%	0%	0%
11/07/2006	11	92%	8%	100%	0%	88%	100%	100%	100%	0%	96%	68%	88%	0%	0%
12/07/2006	12	83%	25%	92%	29%	58%	88%	71%	83%	0%	88%	62%	88%	0%	0%
13/07/2006	13	88%	46%	96%	0%	96%	96%	29%	96%	0%	96%	64%	88%	0%	0%
14/07/2006	14	79%	75%	83%	4%	75%	100%	75%	100%	0%	96%	69%	88%	0%	0%
15/07/2006	15	100%	63%	92%	38%	100%	100%	42%	100%	0%	67%	70%	88%	0%	0%
16/07/2006	16	100%	54%	96%	79%	88%	100%	92%	88%	0%	79%	78%	88%	0%	0%
17/07/2006	17	100%	0%	100%	83%	100%	100%	100%	100%	0%	100%	78%	88%	0%	0%
18/07/2006	18	100%	0%	100%	0%	88%	96%	100%	88%	0%	88%	66%	88%	0%	0%
19/07/2006	19	100%	25%	67%	0%	83%	96%	63%	96%	0%	75%	61%	88%	0%	0%
20/07/2006	20	100%	88%	83%	50%	100%	100%	88%	100%	0%	88%	80%	88%	0%	0%
21/07/2006	21	100%	88%	96%	100%	100%	79%	17%	88%	0%	96%	76%	88%	0%	0%
22/07/2006	22	100%	88%	92%	100%	100%	46%	100%	100%	0%	100%	83%	88%	0%	0%
23/07/2006	23	100%	46%	42%	92%	21%	0%	100%	100%	0%	100%	60%	88%	0%	0%
24/07/2006	24	100%	67%	79%	0%	29%	0%	100%	100%	0%	88%	56%	88%	0%	0%
25/07/2006	25	100%	88%	58%	0%	38%	67%	100%	100%	0%	96%	65%	88%	0%	0%
26/07/2006	26	100%	100%	96%	29%	75%	100%	100%	100%	0%	88%	79%	88%	0%	0%
27/07/2006	27	100%	100%	100%	75%	54%	83%	100%	100%	0%	96%	81%	88%	0%	0%
28/07/2006	28	100%	75%	100%	13%	100%	8%	67%	100%	0%	83%	65%	88%	0%	0%
29/07/2006	29	33%	94%	100%	81%	99%	67%	94%	100%	0%	97%	77%	88%	0%	0%
30/07/2006	30	100%	100%	100%	100%	100%	100%	100%	100%	0%	100%	90%	88%	0%	0%
31/07/2006	31	100%	100%	100%	100%	100%	100%	100%	100%	0%	100%	90%	88%	0%	0%
<b>Average availability</b>		<b>90%</b>	<b>54%</b>	<b>87%</b>	<b>31%</b>	<b>73%</b>	<b>84%</b>	<b>80%</b>	<b>98%</b>	<b>20%</b>	<b>87%</b>	<b>70%</b>	<b>88%</b>	<b>0%</b>	<b>0%</b>



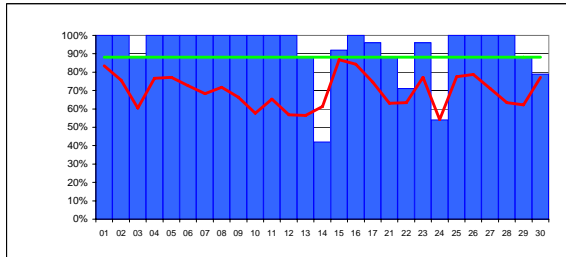
# Availability of WLCG Tier-1 Sites + CERN June 2006

June 18-20 removed - SAM data loss

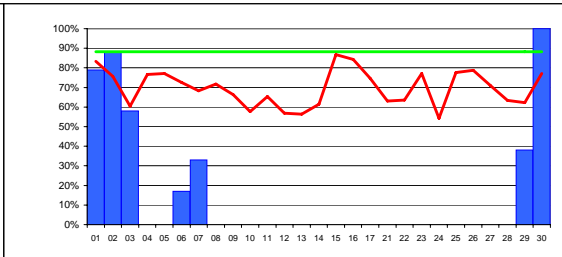
Data from SAM monitoring. Site availability as agreed in WLCG MB on 07mar06 and 04apr06. Service considered unavailable from time of first failure to time of next success Scheduled interruptions are considered as unavailable.

average (all sites) — 70% target — 88%

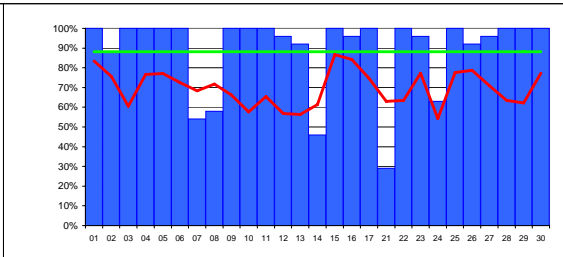
site average colour coding: < 90% of target ≥ 90% of target ≥ target



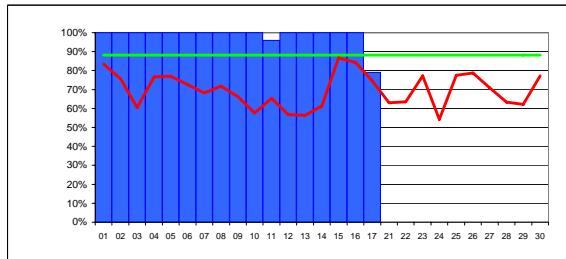
**CERN-PROD** average 92%



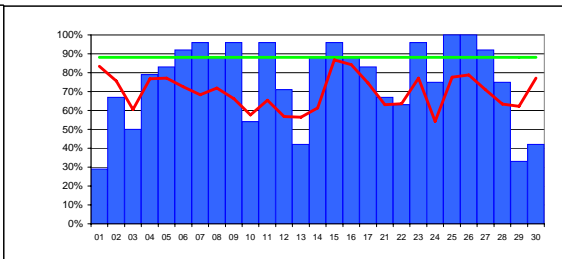
**FZK-LCG2** average 15%



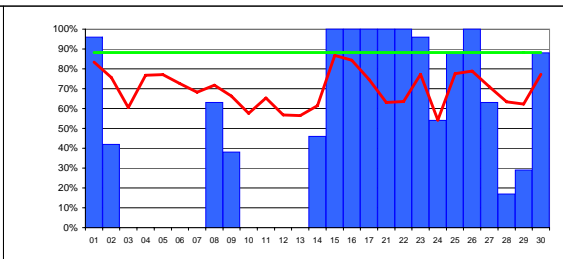
**IN2P3-CC** average 89%



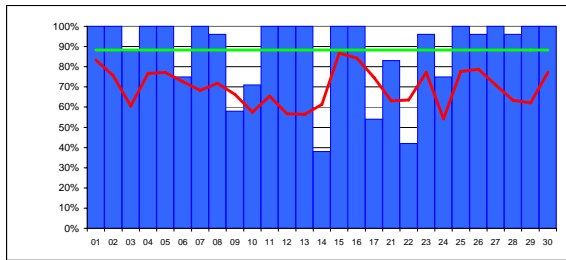
**INFN-T1** average 62%



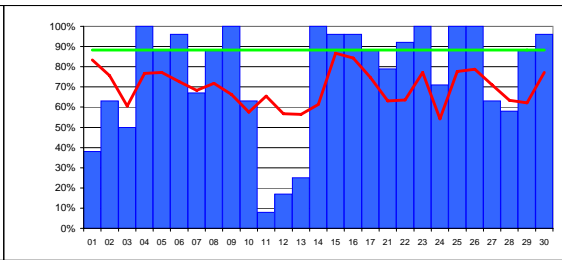
**RAL-LCG2** average 76%



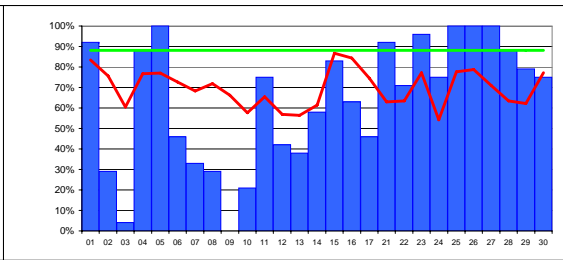
**SARA-MATRIX** average 49%



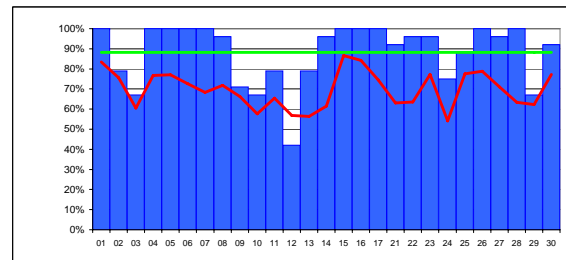
**TRIUMF-LCG2** average 88%



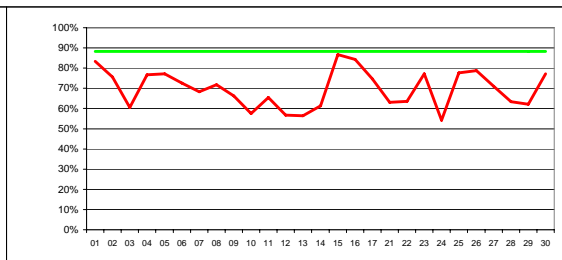
**Taiwan-LCG2** average 75%



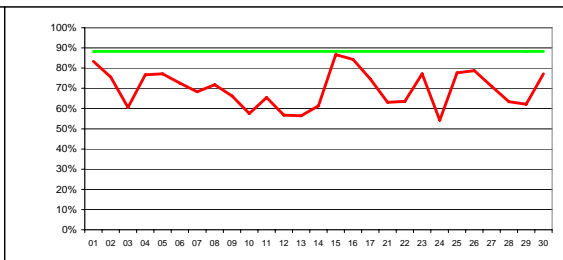
**USCMS-FNAL-WC1** average 64%



**PIC** average 88%



**BNL** average n/a



**NDGF** average n/a



## SAM - Service Availability Monitoring Data

June 2006

Colour coding limits: **≥TARGET:** 88%

90% OF TARGET: 79%

### WLCG Tier-1s + CERN

Data from SAM monitoring. Site availability as agreed in WLCG MB on 07mar06 and 04apr06. Service considered unavailable from time of first failure to time of next success. **Scheduled interruptions are considered as unavailable.**

Date		CERN-PROD	FZK-LCG2	IN2P3-CC	INFN-T1	RAL-LCG2	SARA-MATRIX	TRIUMF-LCG2	Taiwan-LCG2	USCMS-FNAL WC1	PIC	average - all sites	target	BNL-LCG2	NDGF
01/06/2006	1	100%	79%	100%	100%	29%	96%	100%	38%	92%	100%	83%	88%	0%	0%
02/06/2006	2	100%	88%	88%	100%	67%	42%	100%	63%	29%	79%	76%	88%	0%	0%
03/06/2006	3	88%	58%	100%	100%	50%	0%	88%	50%	4%	67%	61%	88%	0%	0%
04/06/2006	4	100%	0%	100%	100%	79%	0%	100%	100%	88%	100%	77%	88%	0%	0%
05/06/2006	5	100%	0%	100%	100%	83%	0%	100%	88%	100%	100%	77%	88%	0%	0%
06/06/2006	6	100%	17%	100%	100%	92%	0%	75%	96%	46%	100%	73%	88%	0%	0%
07/06/2006	7	100%	33%	54%	100%	96%	0%	100%	67%	33%	100%	68%	88%	0%	0%
08/06/2006	8	100%	0%	58%	100%	88%	63%	96%	88%	29%	96%	72%	88%	0%	0%
09/06/2006	9	100%	0%	100%	100%	96%	38%	58%	100%	0%	71%	66%	88%	0%	0%
10/06/2006	10	100%	0%	100%	100%	54%	0%	71%	63%	21%	67%	58%	88%	0%	0%
11/06/2006	11	100%	0%	100%	96%	96%	0%	100%	8%	75%	79%	65%	88%	0%	0%
12/06/2006	12	100%	0%	96%	100%	71%	0%	100%	17%	42%	42%	57%	88%	0%	0%
13/06/2006	13	88%	0%	92%	100%	42%	0%	100%	25%	38%	79%	56%	88%	0%	0%
14/06/2006	14	42%	0%	46%	100%	88%	46%	38%	100%	58%	96%	61%	88%	0%	0%
15/06/2006	15	92%	0%	100%	100%	96%	100%	100%	96%	83%	100%	87%	88%	0%	0%
16/06/2006	16	100%	0%	96%	100%	88%	100%	100%	96%	63%	100%	84%	88%	0%	0%
17/06/2006	17	96%	0%	100%	79%	83%	100%	54%	88%	46%	100%	75%	88%	0%	0%
21/06/2006	21	88%	0%	29%	0%	67%	100%	83%	79%	92%	92%	63%	88%	0%	0%
22/06/2006	22	71%	0%	100%	0%	63%	100%	42%	92%	71%	96%	64%	88%	0%	0%
23/06/2006	23	96%	0%	96%	0%	96%	96%	96%	100%	96%	96%	77%	88%	0%	0%
24/06/2006	24	54%	0%	63%	0%	75%	54%	75%	71%	75%	75%	54%	88%	0%	0%
25/06/2006	25	100%	0%	100%	0%	100%	88%	100%	100%	100%	88%	78%	88%	0%	0%
26/06/2006	26	100%	0%	92%	0%	100%	100%	96%	100%	100%	100%	79%	88%	0%	0%
27/06/2006	27	100%	0%	96%	0%	92%	63%	100%	63%	100%	96%	71%	88%	0%	0%
28/06/2006	28	100%	0%	100%	0%	75%	17%	96%	58%	88%	100%	63%	88%	0%	0%
29/06/2006	29	88%	38%	100%	0%	33%	29%	100%	88%	79%	67%	62%	88%	0%	0%
30/06/2006	30	79%	100%	100%	0%	42%	88%	100%	96%	75%	92%	77%	88%	0%	0%
Average		92%	15%	89%	62%	76%	49%	88%	75%	64%	88%	70%	88%	0%	0%

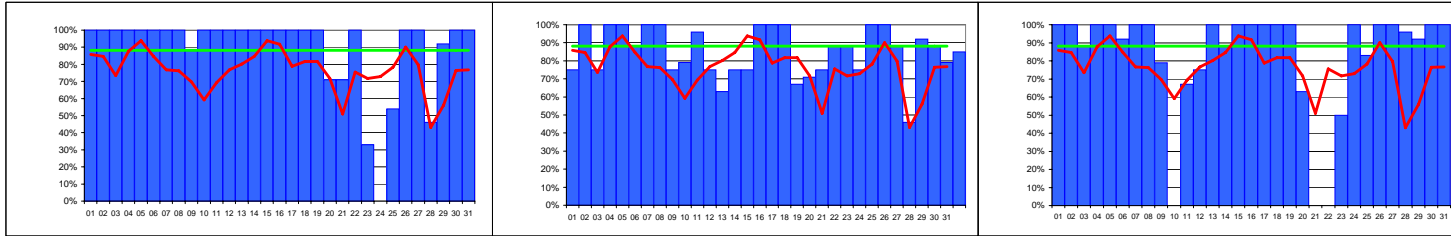


# Availability of WLCG Tier-1 Sites + CERN May 2006

Data from SAM monitoring. Site availability as agreed in WLCG MB on 07mar06 and 04apr06. Service considered unavailable from time of first failure to time of next success. Scheduled interruptions are considered as unavailable.

average (all sites) — 77% — target 88%

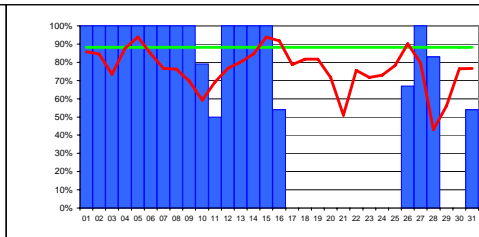
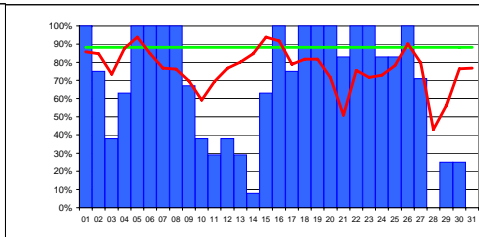
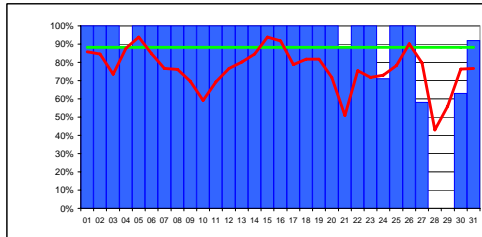
site average colour coding: < 90% of target ≥ 90% of target ≥ target



**CERN-PROD** average 89%

**FZK-LCG2** average 85%

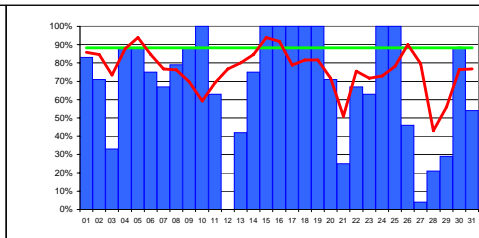
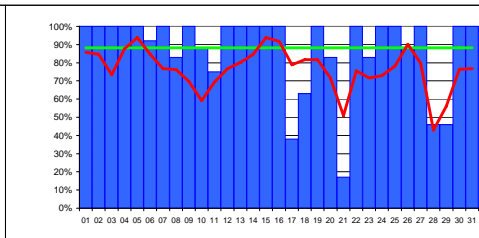
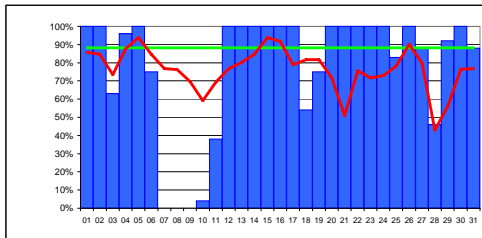
**IN2P3-CC** average 83%



**INFN-T1** average 89%

**RAL-LCG2** average 68%

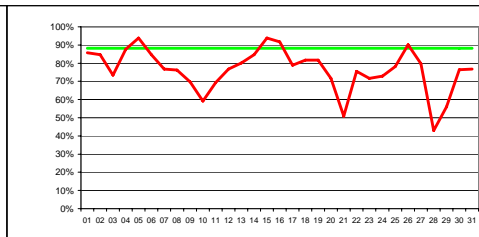
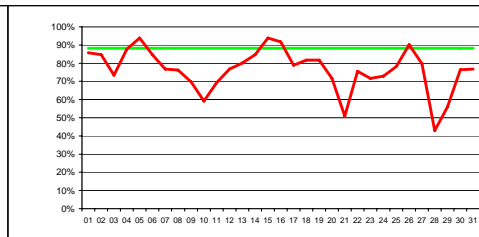
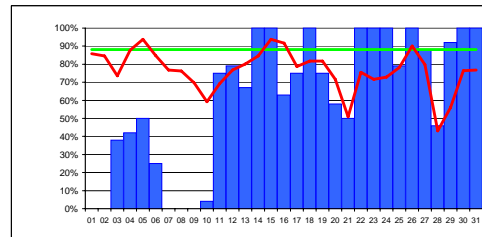
**SARA-MATRIX** average 58%



**TRIUMF-LCG2** average 77%

**Taiwan-LCG2** average 87%

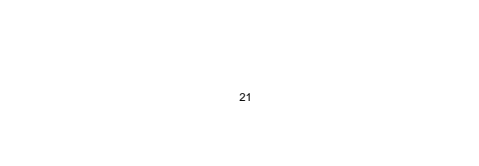
**USCMS-FNAL-WC1** average 68%



**PIC** average 61%

**BNL** average n/a

**NDGF** average n/a





## SAM - Service Availability Monitoring Data

May 2006

Colour coding limits:  $\geq$ TARGET:

88%

90% OF  
TARGET:

79%

### WLCG Tier-1s + CERN

Data from SAM monitoring. Site availability as agreed in WLCG MB on 07mar06 and 04apr06. Service considered unavailable from time of first failure to time of next success. Scheduled interruptions are considered as unavailable.

Date		CERN-PROD	FZK-LCG2	IN2P3-CC	INFN-T1	RAL-LCG2	SARA-MATRIX	TRIUMF-LCG2	Taiwan-LCG2	USCMS-FNAL-WC1	PIC	average - all sites	target	BNL-LCG2	NDGF
01/05/2006	1	100%	75%	100%	100%	100%	100%	100%	100%	83%	0%	86%	88%	0%	0%
02/05/2006	2	100%	100%	100%	100%	75%	100%	100%	100%	71%	0%	85%	88%	0%	0%
03/05/2006	3	100%	75%	88%	100%	38%	100%	63%	100%	33%	38%	74%	88%	0%	0%
04/05/2006	4	100%	100%	100%	100%	63%	100%	96%	100%	88%	42%	88%	88%	0%	0%
05/05/2006	5	100%	100%	100%	100%	100%	100%	100%	100%	88%	50%	94%	88%	0%	0%
06/05/2006	6	100%	88%	92%	100%	100%	100%	75%	92%	75%	25%	85%	88%	0%	0%
07/05/2006	7	100%	100%	100%	100%	100%	100%	0%	100%	67%	0%	77%	88%	0%	0%
08/05/2006	8	100%	100%	100%	100%	100%	100%	0%	83%	79%	0%	76%	88%	0%	0%
09/05/2006	9	88%	75%	79%	100%	67%	100%	0%	100%	88%	0%	70%	88%	0%	0%
10/05/2006	10	100%	79%	0%	100%	38%	79%	4%	88%	100%	4%	59%	88%	0%	0%
11/05/2006	11	100%	96%	67%	100%	29%	50%	38%	75%	63%	75%	69%	88%	0%	0%
12/05/2006	12	100%	75%	75%	100%	38%	100%	100%	100%	0%	79%	77%	88%	0%	0%
13/05/2006	13	100%	63%	100%	100%	29%	100%	100%	100%	42%	67%	80%	88%	0%	0%
14/05/2006	14	100%	75%	88%	100%	8%	100%	100%	100%	75%	100%	85%	88%	0%	0%
15/05/2006	15	100%	75%	100%	100%	63%	100%	100%	100%	100%	100%	94%	88%	0%	0%
16/05/2006	16	100%	100%	100%	100%	100%	54%	100%	100%	100%	63%	92%	88%	0%	0%
17/05/2006	17	100%	100%	100%	100%	75%	0%	100%	38%	100%	75%	79%	88%	0%	0%
18/05/2006	18	100%	100%	100%	100%	100%	0%	54%	63%	100%	100%	82%	88%	0%	0%
19/05/2006	19	100%	67%	100%	100%	100%	0%	75%	100%	100%	75%	82%	88%	0%	0%
20/05/2006	20	71%	71%	63%	100%	100%	0%	100%	83%	71%	58%	72%	88%	0%	0%
21/05/2006	21	71%	75%	0%	88%	83%	0%	100%	17%	25%	50%	51%	88%	0%	0%
22/05/2006	22	100%	88%	0%	100%	100%	0%	100%	100%	67%	100%	76%	88%	0%	0%
23/05/2006	23	33%	88%	50%	100%	100%	0%	100%	83%	63%	100%	72%	88%	0%	0%
24/05/2006	24	0%	75%	100%	71%	83%	0%	100%	100%	100%	100%	73%	88%	0%	0%
25/05/2006	25	54%	100%	83%	100%	83%	0%	83%	100%	100%	79%	78%	88%	0%	0%
26/05/2006	26	100%	100%	100%	100%	100%	67%	100%	88%	46%	100%	90%	88%	0%	0%
27/05/2006	27	100%	88%	100%	58%	71%	100%	88%	100%	4%	88%	80%	88%	0%	0%
28/05/2006	28	46%	46%	96%	0%	0%	83%	46%	46%	21%	46%	43%	88%	0%	0%
29/05/2006	29	92%	92%	92%	0%	25%	0%	92%	46%	29%	92%	56%	88%	0%	0%
30/05/2006	30	100%	88%	100%	63%	25%	0%	100%	100%	88%	100%	76%	88%	0%	0%
31/05/2006	31	100%	79%	100%	92%	0%	54%	88%	100%	54%	100%	77%	88%	0%	0%
Average		89%	85%	83%	89%	68%	58%	77%	87%	68%	61%	77%	88%	0%	0%