



WLCG Accounting Report
September 2006
Tier-1 Centres + CERN



WLCG Accounting Summary

September 2006 data source: site reports to LCG Project Office
Centre Summary of CERN + Tier-1s

Please report accounting data in the shaded cells and return the report to lcg.office@cern.ch

MoU pledges for 2006	
CPU (KSI2K-years)	12,471
Disk (Tbytes)	4,397
Tape (Tbytes)	5,633

Standard efficiency factors	
Scheduled cpu used (Tier-0, -1)	85%
Chaotic cpu used (Tier-2)	60%
Disk utilisation	70%
Mass store utilisation	100%

		Jan-06	Feb-06	Mar-06	Apr-06	May-06	Jun-06	Jul-06	Aug-06	Sep-06	Oct-06	Nov-06	Dec-06	MoU * monthly average	aggregate 2006 to date***		
														total	% MoU		
CPU Grid	ALICE	cpu	1,715	875		1,330	3,750	8,085	9,137	7,834	9,258					41,984	
		wall	2,071	1,050		1,562	6,264	11,372	13,144	14,171	21,949					71,591	
	ATLAS	cpu	14,602	24,397	33,445	47,974	41,477	39,482	37,498	20,708	25,887					285,470	
		wall	21,287	28,429	37,283	53,027	51,222	46,456	45,578	30,881	37,530					351,693	
	CMS	cpu	13,040	13,769	14,359	17,054	10,317	13,951	16,752	45,575	55,681					200,498	
		wall	22,901	24,561	24,461	31,344	84,787	27,230	29,147	64,614	66,365					375,410	
	LHCb	cpu	1,134	1,815	5,480	7,260	32,390	26,955	34,847	47,132	33,962					190,975	
		wall	4,056	3,311	7,435	8,401	46,983	36,346	44,771	55,307	38,881					245,491	
	TOTAL	cpu	30,491	40,856	53,284	73,618	87,934	88,473	98,234	121,249	124,788	0	0	0	318,011	718,927	25%
		wall	50,315	57,351	69,187	94,334	189,256	121,404	132,640	164,973	164,725	0	0	0	n/a	1,044,185	n/a
CPU Non-Grid	ALICE	cpu	3,312	2,389	615	2,670	4,122	1,490	343	1,854	3,997				20,792		
		wall	5,027	4,218	1,949	3,542	6,483	2,219	1,332	3,502	13,110				41,382		
	ATLAS	cpu	20,348	25,584	21,997	23,970	28,366	20,305	15,474	19,151	18,439				193,634		
		wall	33,867	32,660	28,259	34,551	43,128	23,872	37,373	34,114	33,316				301,140		
	CMS	cpu	11,069	25,646	26,782	14,892	16,081	9,160	12,251	14,855	16,754				147,490		
		wall	19,444	33,818	40,640	23,639	48,385	16,424	23,177	28,957	24,046				258,530		
	LHCb	cpu	2,526	2,953	3,584	3,456	3,666	3,036	5,573	6,455	4,851				36,100		
		wall	5,028	4,775	7,113	6,390	16,860	4,946	7,923	9,330	8,149				70,514		
	TOTAL	cpu	37,255	56,572	52,978	44,988	52,235	33,991	33,641	42,315	44,041	0	0	0	318,011	398,016	14%
		wall	63,366	75,471	77,961	68,122	114,856	47,461	69,805	75,903	78,621	0	0	0	n/a	671,566	n/a
CPU Total	ALICE	cpu	5,027	3,264	615	4,000	7,872	9,575	9,480	9,688	13,255				62,776		
		wall	7,098	5,268	1,957	5,104	12,747	13,591	14,476	17,673	35,059				112,973		
	ATLAS	cpu	34,950	49,981	55,442	71,944	69,843	59,787	52,972	39,859	44,326				479,104		
		wall	55,154	61,089	65,542	87,578	94,350	70,328	82,951	64,995	70,846				652,833		
	CMS	cpu	24,109	39,415	41,141	31,946	26,398	23,111	29,003	60,430	72,435				347,988		
		wall	42,345	58,379	65,101	54,983	133,172	43,654	52,324	93,571	90,411				633,940		
	LHCb	cpu	3,660	4,768	9,064	10,716	36,056	29,991	40,420	53,587	38,813				227,075		
		wall	9,084	8,086	14,548	14,791	63,843	41,292	52,694	64,637	47,030				316,005		
	TOTAL	cpu	67,746	97,428	106,262	118,606	140,169	122,464	131,875	163,564	168,829	0	0	0	318,011	1,116,943	39%
		wall	113,681	132,822	147,148	162,456	304,112	168,865	202,445	240,876	243,346	0	0	0	n/a	1,715,751	n/a
installed capacity**			225	225	8,405	8,385	8,336	8,529	9,377	11,017							
cpu usage as % installed****		n/a	1819%	1792%	55%	66%	58%	61%	68%	60%	n/a	n/a	n/a				

Notes - cpu tables

- * MoU monthly average - commitment in MoU for KSI2K-days of cpu time per month (includes efficiency factor)
- ** installed capacity - capacity installed (KSI2K)
- *** aggregate 2006 to date - total - KSI2K-days delivered in calendar year to current date
- % MoU - percentage of MoU commitment in calendar year to current date
- **** cpu usage as % installed - includes efficiency factor



WLCG Accounting Summary

September 2006 data source: site reports to LCG Project Office
Centre Summary of CERN + Tier-1s

Please report accounting data in the shaded cells and return the report to lcg.office@cern.ch

MoU pledges for 2006	
CPU (KSI2K-years)	12,471
Disk (Tbytes)	4,397
Tape (Tbytes)	5,633

Standard efficiency factors	
Scheduled cpu used (Tier-0, -1)	85%
Chaotic cpu used (Tier-2)	60%
Disk utilisation	70%
Mass store utilisation	100%

		Jan-06	Feb-06	Mar-06	Apr-06	May-06	Jun-06	Jul-06	Aug-06	Sep-06	Oct-06	Nov-06	Dec-06	MoU*	last month as MoU	%
Disk Space - TBytes	ALICE	allocated	54	54	95	99	141	143		369	356					
		used	21	21	40	59	60	63	113	164	260					
	ATLAS	allocated	252	252	298	313	385	562	496	565	747					
		used	60	65	66	139	188	356	313	303	376					
	CMS	allocated	165	159	205	352	318	436	643	1,024	1,145					
		used	101	104	114	253	192	323	345	418	566					
	LHCb	allocated	43	41	102	106	170	194	206	249	192					
		used	22	22	35	41	80	75	85	101	106					
	TOTAL	allocated	514	506	700	870	1,014	1,335	1,345	2,207	2,440	0	0	0	4,397	55%
		used	204	212	255	492	520	817	856	986	1,308	0	0	0	3,078	42%
	installed capacity**	40	40	40	2,135	2,119	2,155	2,188	2,263	2,530						
	disk usage as % installed***	729%	757%	911%	33%	35%	54%	56%	62%	74%	n/a	n/a	n/a			

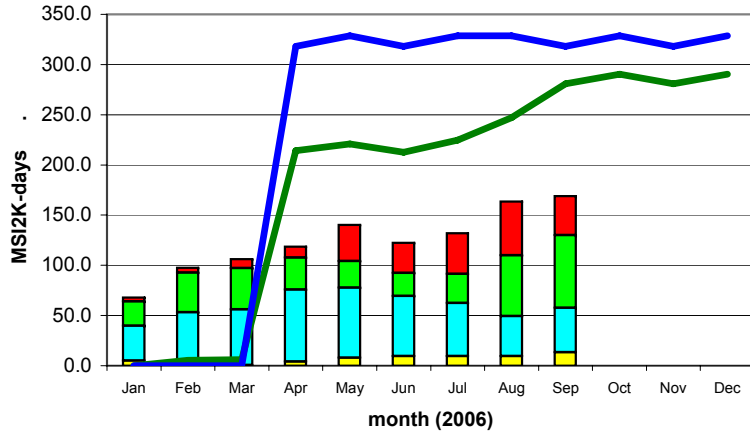
		Jan-06	Feb-06	Mar-06	Apr-06	May-06	Jun-06	Jul-06	Aug-06	Sep-06	Oct-06	Nov-06	Dec-06	MoU*	last month as MoU	%
Tape Space Used - TBytes	ALICE	287	288	288	293	313	342	283	343	420						
	ATLAS	637	645	685	795	863	999	1,201	1,236	1,328						
	CMS	434	451	685	879	972	923	964	1,014	1,101						
	LHCb	307	311	324	381	455	487	504	629	650						
	TOTAL	1,665	1,695	1,982	2,348	2,603	2,751	2,952	3,222	3,499	0	0	0	5,633	62%	
		installed capacity**	70	70	70	5,170	5,214	5,227	5,402	5,473	5,698					
		tape usage as % installed***	2379%	2421%	2831%	45%	50%	53%	55%	59%	61%	n/a	n/a	n/a		

Notes - disk and tape tables
 Space used/allocated at end of the calendar month
 * MoU - commitment in MoU for data storage - includes efficiency factors for space used
 ** installed capacity - capacity installed (TB)
 *** disk/tape usage as % installed - includes efficiency factor

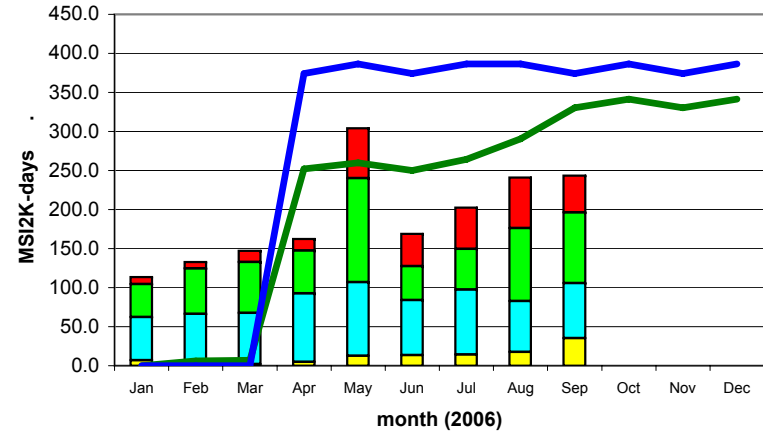
Comments:

Summary of CERN + Tier-1s

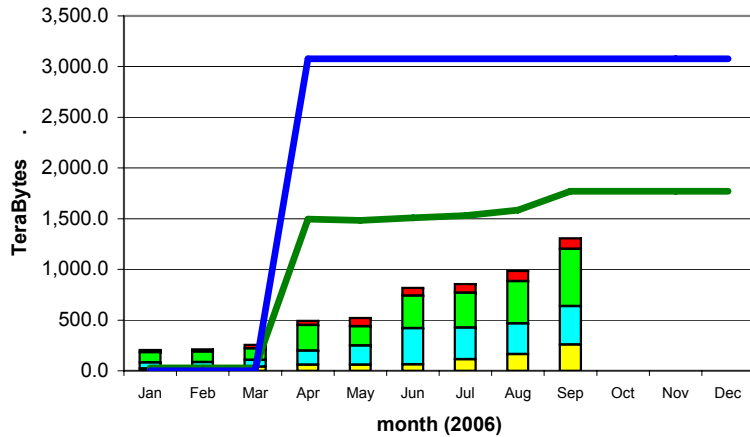
CPU Time Delivered



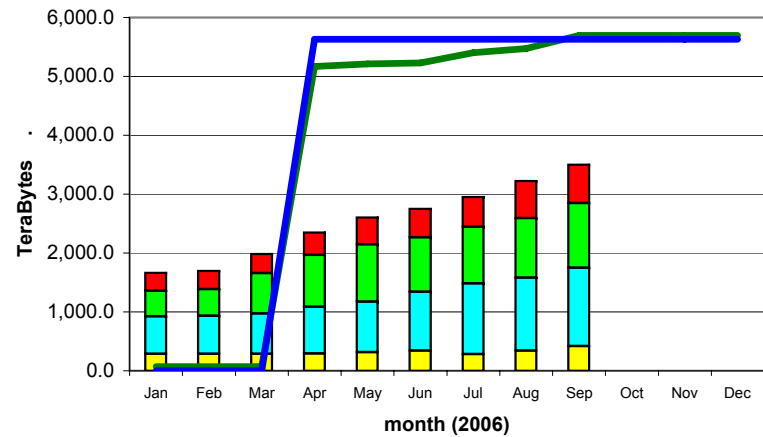
Wall-clock Time Delivered



Disk Storage Used



Tape Storage Used



ALICE █
ATLAS █

CMS █
LHCb █

installed capacity (inc. efficiency factor) —
MoU commitment (inc. efficiency factor) —



Accounting Summary April - August-06
CERN + Tier-1s

Site Summary	cpu			disk occupancy			tape occupancy		
	KSI2K-days	% of installed	% of pledge	TBytes at end of period	% of installed	% of pledge	TBytes at end of period	% of installed	% of pledge
CERN Tier-0+CAF	221,631	75%	50%	470	67%	87%	1,586	63%	106%
ASGC	20,791	37%	17%	30	89%	11%	13	4%	3%
BNL	79,897	88%	55%	46	37%	13%	328	78%	109%
CC-IN2P3	41,734	47%	27%	55	89%	15%	298	68%	56%
CNAF	60,821	30%	26%	102	32%	17%	207	41%	24%
FNAL	72,055	62%	76%	120	171%	171%	300	100%	120%
FZK-GridKA	39,714	48%	30%	55	28%	28%	260	66%	66%
NDGF	17,499	33%	24%	44	60%	37%	0	0%	0%
NL LHC/Tier-1	25,545	80%	64%	7	63%	6%	22	44%	15%
PIC	15,702	80%	48%	15	102%	15%	106	92%	67%
RAL	79,521	104%	62%	36	86%	11%	102	40%	15%
TRIUMF	1,768	80%	8%	6	71%	32%	0	0%	0%
Total	513,114	59%	40%	856	56%	28%	2,952	55%	52%

VO Summary	cpu		disk occupancy		tape occupancy	
	KSI2K-days	% of total	TBytes at end of period	% of total	TBytes at end of period	% of total
ALICE	40,615	6%	164	17%	343	11%
ATLAS	294,405	44%	303	31%	1,236	38%
CMS	170,888	25%	418	42%	1,014	31%
LHCb	170,770	25%	101	10%	629	20%
Total	676,678	100%	986	100%	3,222	100%



Accounting Summary April - August-06
CERN + Tier-1s

ALICE	<i>cpu</i>		<i>disk occupancy</i>		<i>tape occupancy</i>	
	<i>KSI2K-days</i>	<i>% of total</i>	<i>TBytes at end of period</i>	<i>% of total</i>	<i>TBytes at end of period</i>	<i>% of total</i>
CERN Tier-0+CAF	17,893	44%	123	75%	254	74%
ASGC						
BNL						
CC-IN2P3	6,118	15%	16	10%	34	10%
CNAF	9,166	23%	13	8%	23	7%
FNAL						
FZK-GridKA	2,396	6%	12	7%	30	9%
NDGF	1	0%				
NL LHC/Tier-1	3,329	8%				
PIC						
RAL	1,712	4%			2	1%
TRIUMF						
Total	40,615	100%	164	100%	343	100%

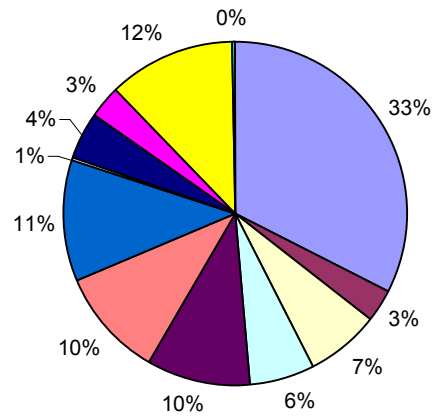
ATLAS	<i>cpu</i>		<i>disk occupancy</i>		<i>tape occupancy</i>	
	<i>KSI2K-days</i>	<i>% of total</i>	<i>TBytes at end of period</i>	<i>% of total</i>	<i>TBytes at end of period</i>	<i>% of total</i>
CERN Tier-0+CAF	82,533	28%	117	39%	457	37%
ASGC	11,897	4%	20	7%	11	1%
BNL	79,897	27%	46	15%	328	27%
CC-IN2P3	18,993	6%	14	5%	126	10%
CNAF	18,764	6%	13	4%	94	8%
FNAL	4,619	2%				
FZK-GridKA	16,815	6%	17	6%	101	8%
NDGF	17,498	6%	44	15%		
NL LHC/Tier-1	11,758	4%	5	2%	18	1%
PIC	5,435	2%	7	2%	54	4%
RAL	24,428	8%	14	5%	47	4%
TRIUMF	1,768	1%	6	2%		
Total	294,405	100%	303	100%	1,236	100%

CMS	<i>cpu</i>		<i>disk occupancy</i>		<i>tape occupancy</i>	
	<i>KSI2K-days</i>	<i>% of total</i>	<i>TBytes at end of period</i>	<i>% of total</i>	<i>TBytes at end of period</i>	<i>% of total</i>
CERN Tier-0+CAF	53,706	31%	159	38%	415	41%
ASGC	8,894	5%	10	2%	2	0%
BNL						
CC-IN2P3	3,376	2%	18	4%	76	7%
CNAF	6,624	4%	71	17%	37	4%
FNAL	67,436	39%	120	29%	300	30%
FZK-GridKA	8,824	5%	18	4%	113	11%
NDGF						
NL LHC/Tier-1	497	0%				
PIC	5,420	3%	8	2%	32	3%
RAL	16,111	9%	14	3%	39	4%
TRIUMF						
Total	170,888	100%	418	100%	1,014	100%

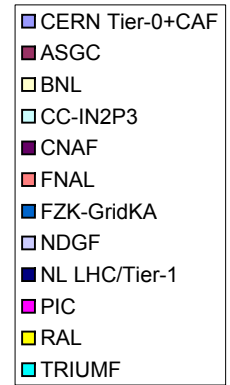
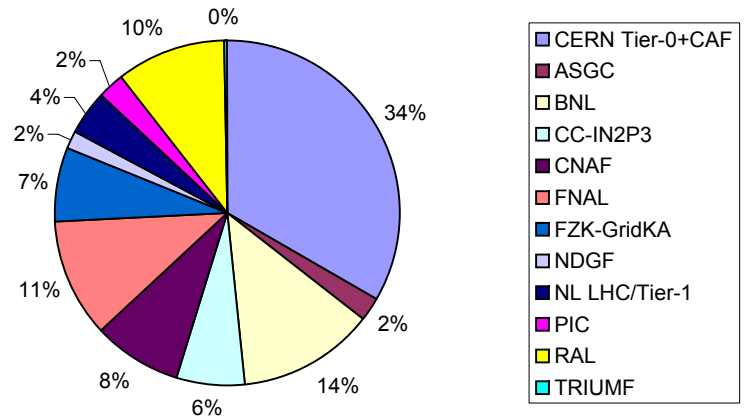
LHCb	<i>cpu</i>		<i>disk occupancy</i>		<i>tape occupancy</i>	
	<i>KSI2K-days</i>	<i>% of total</i>	<i>TBytes at end of period</i>	<i>% of total</i>	<i>TBytes at end of period</i>	<i>% of total</i>
CERN Tier-0+CAF	67,499	40%	71	70%	460	73%
ASGC						
BNL						
CC-IN2P3	13,247	8%	7	7%	62	10%
CNAF	26,267	15%	5	5%	53	8%
FNAL						
FZK-GridKA	11,679	7%	8	8%	16	3%
NDGF						
NL LHC/Tier-1	9,961	6%	2	2%	4	1%
PIC	4,847	3%			20	3%
RAL	37,270	22%	8	8%	14	2%
TRIUMF						
Total	170,770	100%	101	100%	629	100%

CERN + Tier-1s

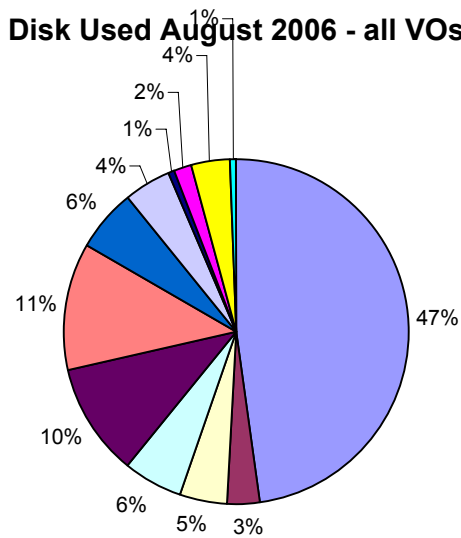
CPU Used August 2006 - all VOs



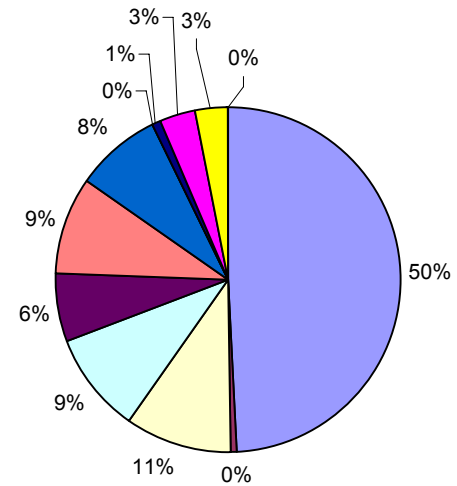
CPU Used Jan-August 2006 - all VOs



Disk Used August 2006 - all VOs



Tape Used August 2006 - all VOs





WLCG Accounting Summary

September 2006 data source: site reports to LCG Project Office
Centre Summary of Tier-1s

Please report accounting data in the shaded cells and return the report to lcg.office@cern.ch

MoU pledges for 2006	
CPU (KSI2K-years)	9,071
Disk (Tbytes)	3,627
Tape (Tbytes)	4,133

Standard efficiency factors	
Scheduled cpu used (Tier-0, -1)	85%
Chaotic cpu used (Tier-2)	60%
Disk utilisation	70%
Mass store utilisation	100%

		Jan-06	Feb-06	Mar-06	Apr-06	May-06	Jun-06	Jul-06	Aug-06	Sep-06	Oct-06	Nov-06	Dec-06	MoU * monthly average	aggregate 2006 to date***			
														total	% MoU			
CPU Grid	ALICE	cpu	1,443	874		782	2,321	5,981	5,192	5,843	5,474					27,910		
		wall	1,692	1,024		912	4,293	8,184	7,966	9,737	13,385					47,201		
	ATLAS	cpu	12,600	23,088	28,462	35,710	30,671	34,034	27,365	17,583	17,524					227,037		
		wall	18,296	26,474	31,033	39,615	38,549	38,650	32,591	27,276	26,224					278,708		
	CMS	cpu	6,410	9,092	8,887	10,197	9,238	12,240	14,941	34,388	43,397					148,790		
		wall	12,131	16,979	16,165	17,304	69,238	15,046	19,915	46,568	51,303					264,649		
	LHCb	cpu	811	1,277	3,690	4,893	18,415	17,552	17,367	27,625	19,710					111,340		
		wall	2,033	1,879	4,007	5,288	24,313	22,613	20,958	31,340	22,146					134,577		
		TOTAL	cpu	21,264	34,331	41,039	51,582	60,645	69,807	64,865	85,439	86,105	0	0	0	231,311	515,077	25%
		wall	34,152	46,356	51,213	63,119	136,393	84,493	81,430	114,921	113,058	0	0	0	n/a	725,135	n/a	
CPU Non-Grid	ALICE	cpu	1,298	1,981	202	716	85	815	146	841	3,047					9,131		
		wall	2,119	3,449	475	1,048	98	938	259	1,098	10,445					19,929		
	ATLAS	cpu	10,870	15,936	13,905	15,380	16,811	12,238	9,628	12,452	13,477					120,697		
		wall	13,743	18,617	15,174	17,108	18,501	12,283	10,282	21,262	18,034					145,004		
	CMS	cpu	3,514	10,615	13,262	10,187	9,977	4,954	5,563	5,497	9,807					73,376		
		wall	5,617	13,260	16,740	13,164	33,736	6,221	6,824	11,139	11,788					118,489		
	LHCb	cpu	1,455	2,350	2,437	1,854	1,984	2,535	5,056	5,990	4,030					27,691		
		wall	1,824	2,758	2,817	2,332	2,885	3,179	6,153	8,014	5,392					35,354		
		TOTAL	cpu	17,137	30,882	29,806	28,137	28,857	20,542	20,393	24,780	30,361	0	0	0	231,311	230,895	11%
		wall	23,303	38,084	35,206	33,652	55,220	22,621	23,518	41,513	45,659	0	0	0	n/a	318,776	n/a	
CPU Total	ALICE	cpu	2,741	2,855	202	1,498	2,406	6,796	5,338	6,684	8,521					37,041		
		wall	3,811	4,473	483	1,960	4,391	9,122	8,225	10,835	23,830					67,130		
	ATLAS	cpu	23,470	39,024	42,367	51,090	47,482	46,272	36,993	30,035	31,001					347,734		
		wall	32,039	45,091	46,207	56,723	57,050	50,933	42,873	48,538	44,258					423,712		
	CMS	cpu	9,924	19,707	22,149	20,384	19,215	17,194	20,504	39,885	53,204					222,166		
		wall	17,748	30,239	32,905	30,468	102,974	21,267	26,739	57,707	63,091					383,138		
	LHCb	cpu	2,266	3,627	6,127	6,747	20,399	20,087	22,423	33,615	23,740					139,031		
		wall	3,857	4,637	6,824	7,620	27,198	25,792	27,111	39,354	27,538					169,931		
		TOTAL	cpu	38,401	65,213	70,845	79,719	89,502	90,349	85,258	110,219	116,466	0	0	0	231,311	745,972	36%
		wall	57,455	84,440	86,419	96,771	191,613	107,114	104,948	156,434	158,717	0	0	0	n/a	1,043,911	n/a	
	installed capacity**		225	225	6,125	6,105	6,056	6,249	7,097	8,737								
	cpu usage as % installed****	n/a	1218%	1195%	51%	57%	59%	54%	61%	52%	n/a	n/a	n/a					

Notes - cpu tables
 * MoU monthly average - commitment in MoU for KSI2K-days of cpu time per month (includes efficiency factor)
 ** installed capacity - capacity installed (KSI2K)
 *** aggregate 2006 to date - total - KSI2K-days delivered in calendar year to current date
 - % MoU - percentage of MoU commitment in calendar year to current date
 **** cpu usage as % installed - includes efficiency factor



WLCG Accounting Summary

September 2006 data source: site reports to LCG Project Office
Centre Summary of Tier-1s

Please report accounting data in the shaded cells and return the report to lcg.office@cern.ch

MoU pledges for 2006	
CPU (KSI2K-years)	9,071
Disk (Tbytes)	3,627
Tape (Tbytes)	4,133

Standard efficiency factors	
Scheduled cpu used (Tier-0, -1)	85%
Chaotic cpu used (Tier-2)	60%
Disk utilisation	70%
Mass store utilisation	100%

		Jan-06	Feb-06	Mar-06	Apr-06	May-06	Jun-06	Jul-06	Aug-06	Sep-06	Oct-06	Nov-06	Dec-06	MoU*	last month as MoU	%
Disk Space - TBytes	ALICE	allocated	54	54	54	56	56	58	67	69	71					
		used	21	21	21	36	37	28	32	41	40					
	ATLAS	allocated	252	252	254	260	261	288	303	322	491					
		used	60	65	65	125	136	167	168	186	194					
	CMS	allocated	165	159	161	292	185	298	320	628	694					
		used	101	104	107	223	123	238	223	259	324					
	LHCb	allocated	43	41	46	46	49	68	83	94	75					
		used	22	22	25	30	33	20	21	30	31					
	TOTAL	allocated	514	506	515	654	551	712	773	1,113	1,331	0	0	0	3,627	37%
		used	204	212	218	414	329	453	444	516	589	0	0	0	2,539	23%
	installed capacity**	40	40	40	1,135	1,119	1,155	1,188	1,263	1,530						
	disk usage as % installed***	729%	757%	779%	52%	42%	56%	53%	58%	55%	n/a	n/a	n/a			

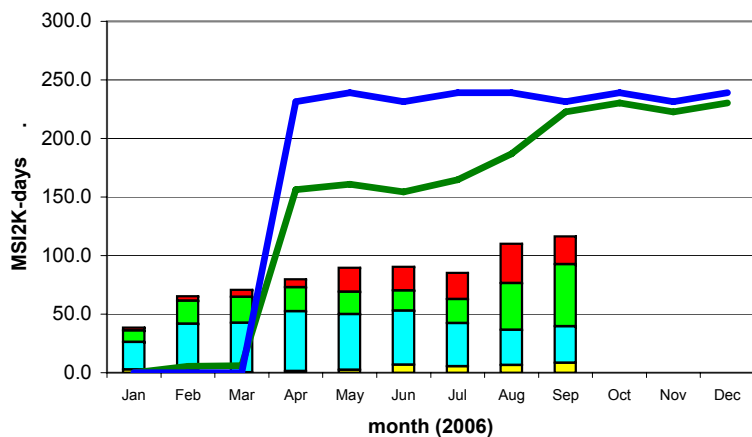
		Jan-06	Feb-06	Mar-06	Apr-06	May-06	Jun-06	Jul-06	Aug-06	Sep-06	Oct-06	Nov-06	Dec-06	MoU*	last month as MoU	%
Tape Space Used - TBytes	ALICE	38	38	38	42	46	46	49	89	103						
	ATLAS	321	339	362	442	480	602	740	779	859						
	CMS	99	106	330	512	601	546	545	599	657						
	LHCb	100	102	111	145	147	150	146	169	175						
	TOTAL	558	585	841	1,141	1,274	1,344	1,480	1,636	1,794	0	0	0	4,133	43%	
		installed capacity**	70	70	70	2,670	2,714	2,727	2,902	2,973	3,198					
		tape usage as % installed***	797%	836%	1201%	43%	47%	49%	51%	55%	56%	n/a	n/a	n/a		

Notes - disk and tape tables
 Space used/allocated at end of the calendar month
 * MoU - commitment in MoU for data storage - includes efficiency factors for space used
 ** installed capacity - capacity installed (TB)
 *** disk/tape usage as % installed - includes efficiency factor

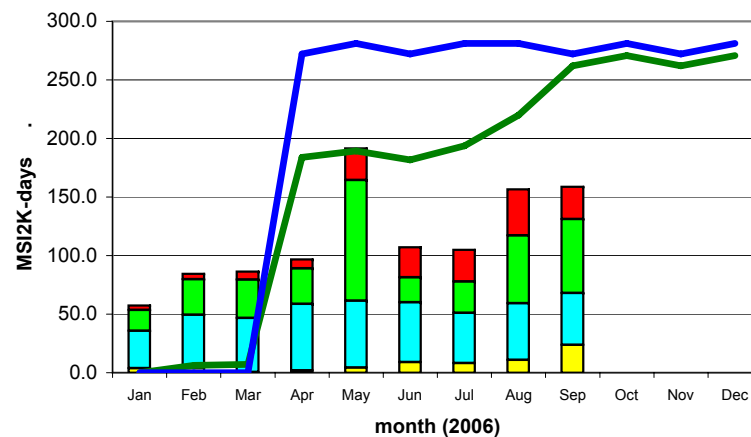
Comments:

Summary of Tier-1s

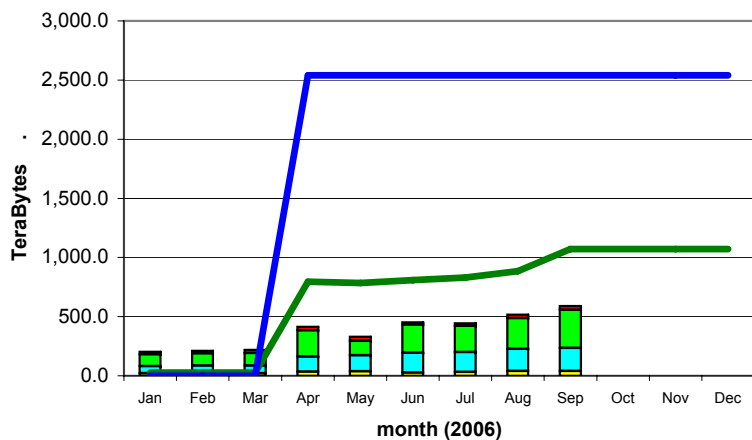
CPU Time Delivered



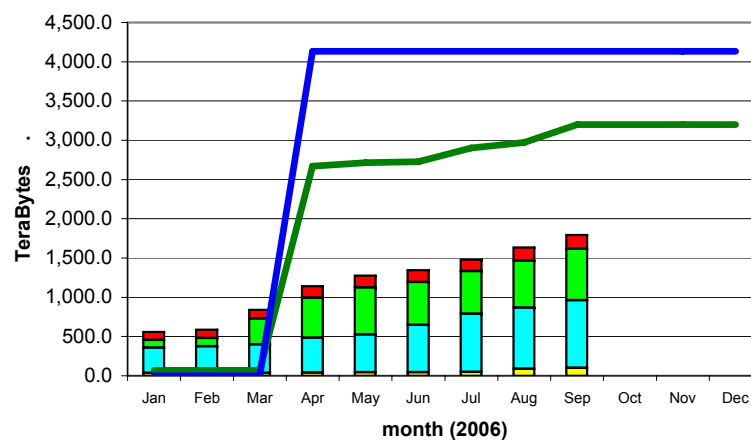
Wall-clock Time Delivered



Disk Storage Used



Tape Storage Used



ALICE		CMS		installed capacity (inc. efficiency factor)	
ATLAS		LHCb		MoU commitment (inc. efficiency factor)	



WLCG Accounting Summary

September 2006 data source: site reports to LCG Project Office
Centre CERN Tier-0+CAF

Please report accounting data in the shaded cells and return the report to lcg.office@cern.ch

MoU pledges for 2006	
CPU (KSI2K-years)	3,400
Disk (Tbytes)	770
Tape (Tbytes)	1,500

Standard efficiency factors	
Scheduled cpu used (Tier-0, -1)	85%
Chaotic cpu used (Tier-2)	60%
Disk utilisation	70%
Mass store utilisation	100%

		Jan-06	Feb-06	Mar-06	Apr-06	May-06	Jun-06	Jul-06	Aug-06	Sep-06	Oct-06	Nov-06	Dec-06	MoU*	last month as MoU	%
Disk Space - TBytes	ALICE	allocated			41	43	85	85	242	300	285					
		used			19	23	23	35	81	123	220					
	ATLAS	allocated			44	53	124	274	193	243	256					
		used			1	14	52	189	145	117	182					
	CMS	allocated			44	60	133	138	323	396	451					
		used			7	30	69	85	122	159	242					
	LHCb	allocated			56	60	121	126	123	155	117					
		used			10	11	47	55	64	71	75					
	TOTAL	allocated	0	0	185	216	463	623	881	1,094	1,109	0	0	0	770	144%
		used	0	0	37	78	191	364	412	470	719	0	0	0	539	133%
	installed capacity**				1,000	1,000	1,000	1,000	1,000	1,000						
	disk usage as % installed***	n/a	n/a	n/a	11%	27%	52%	59%	67%	103%	n/a	n/a	n/a			

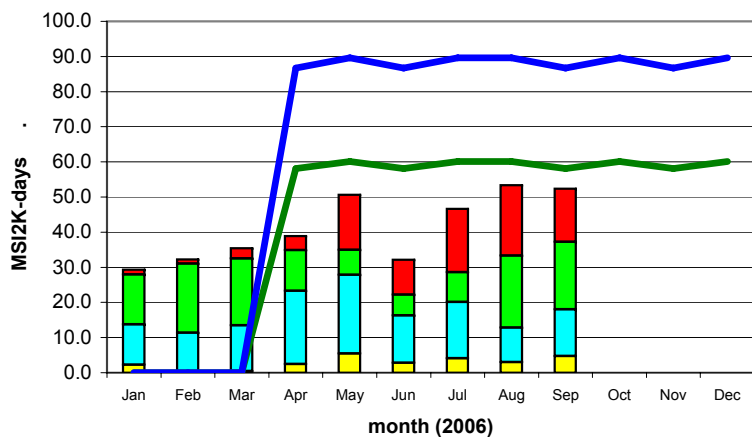
		Jan-06	Feb-06	Mar-06	Apr-06	May-06	Jun-06	Jul-06	Aug-06	Sep-06	Oct-06	Nov-06	Dec-06	MoU*	last month as MoU	%
Tape Space Used - TBytes	ALICE	249	250	250	251	267	296	234	254	317						
	ATLAS	316	306	323	353	383	397	461	457	469						
	CMS	335	345	355	367	371	377	419	415	444						
	LHCb	207	209	213	236	308	337	358	460	475						
	TOTAL	1,107	1,110	1,141	1,207	1,329	1,407	1,472	1,586	1,705	0	0	0	1,500	114%	
		installed capacity**				2,500	2,500	2,500	2,500	2,500	2,500					
	tape usage as % installed***	n/a	n/a	n/a	48%	53%	56%	59%	63%	68%	n/a	n/a	n/a			

Notes - disk and tape tables
 Space used/allocated at end of the calendar month
 * MoU - commitment in MoU for data storage - includes efficiency factors for space used
 ** installed capacity - capacity installed (TB)
 *** disk/tape usage as % installed - includes efficiency factor

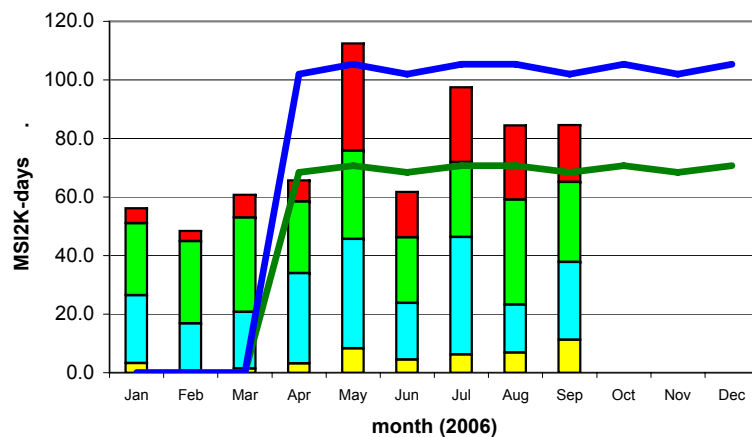
Comments:
max 255 chars

CERN

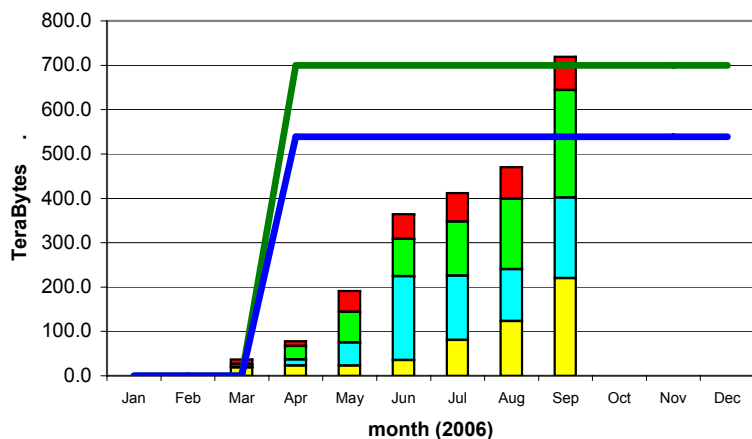
CPU Time Delivered



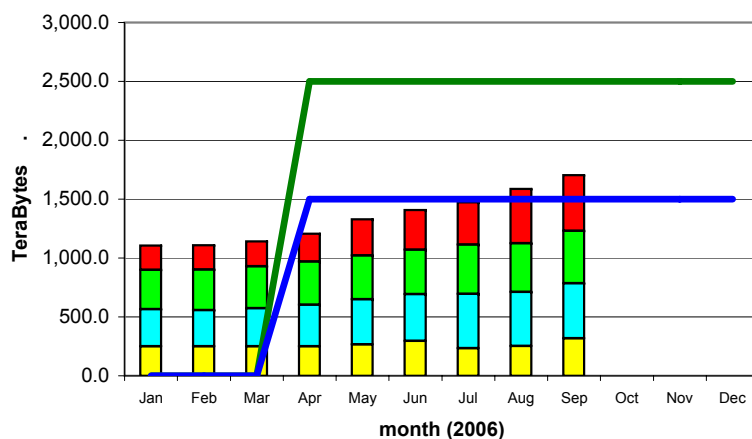
Wall-clock Time Delivered



Disk Storage Used



Tape Storage Used



ALICE █ **CMS** █ **installed capacity (inc. efficiency factor)** —
ATLAS █ **LHCb** █ **MoU commitment (inc. efficiency factor)** —



WLCG Accounting Summary

September 2006

data source: site reports to LCG Project Office

Centre ASGC

Please report accounting data in the shaded cells and return the report to lcg.office@cern.ch

MoU pledges for 2006	
CPU (KSI2K-years)	950
Disk (Tbytes)	400
Tape (Tbytes)	500

Standard efficiency factors	
Scheduled cpu used (Tier-0, -1)	85%
Chaotic cpu used (Tier-2)	60%
Disk utilisation	70%
Mass store utilisation	100%

		Jan-06	Feb-06	Mar-06	Apr-06	May-06	Jun-06	Jul-06	Aug-06	Sep-06	Oct-06	Nov-06	Dec-06	MoU*	last month as MoU	%
Disk Space - TBytes	ALICE	allocated														
		used														
	ATLAS	allocated	20	20	20	20	20	24	24	34	36					
		used	11	11	11	11	11	15	15	20	20					
	CMS	allocated	20	20	20	20	20	24	24	24	30					
		used	4	4	4	4	5	6	6	10	10					
	LHCb	allocated														
		used														
	TOTAL	allocated	40	40	40	40	40	48	48	58	66	0	0	0	400	17%
		used	15	15	15	15	16	21	21	30	30	0	0	0	280	11%
	installed capacity**				40	40	48	48	48	66						
	disk usage as % installed***	n/a	n/a	n/a	54%	57%	63%	63%	89%	65%	n/a	n/a	n/a			

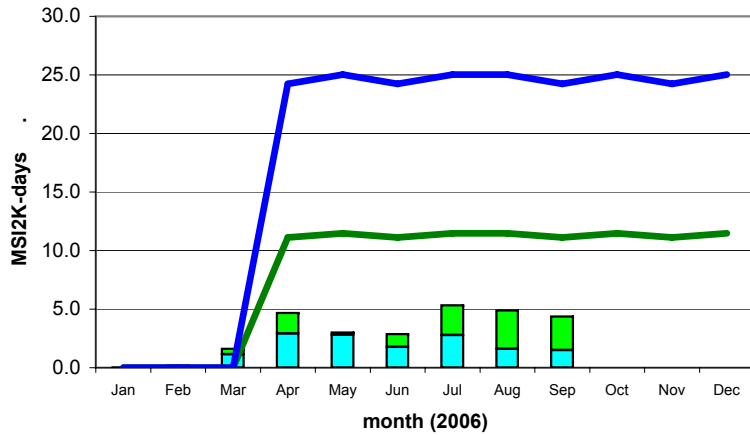
		Jan-06	Feb-06	Mar-06	Apr-06	May-06	Jun-06	Jul-06	Aug-06	Sep-06	Oct-06	Nov-06	Dec-06	MoU*	last month as MoU	%
Tape Space Used - TBytes	ALICE															
	ATLAS	11	11	11	11	11	11	11	11	13						
	CMS	2	2	2	2	2	2	2	2	2						
	LHCb															
	TOTAL	13	13	13	13	13	13	13	13	15	0	0	0	500	3%	
		installed capacity**				304	304	304	304	304	304					
		tape usage as % installed***	n/a	n/a	n/a	4%	4%	4%	4%	4%	5%	n/a	n/a	n/a		

Notes - disk and tape tables
 Space used/allocated at end of the calendar month
 * MoU - commitment in MoU for data storage - includes efficiency factors for space used
 ** installed capacity - capacity installed (TB)
 *** disk/tape usage as % installed - includes efficiency factor

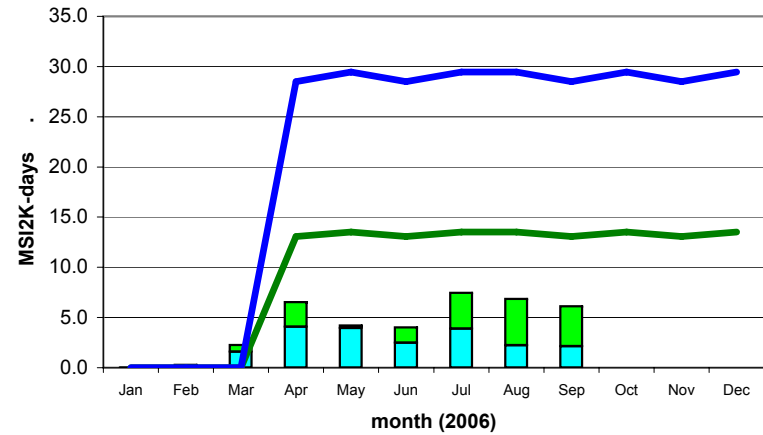
Comments:
 max 255 chars

ASGC

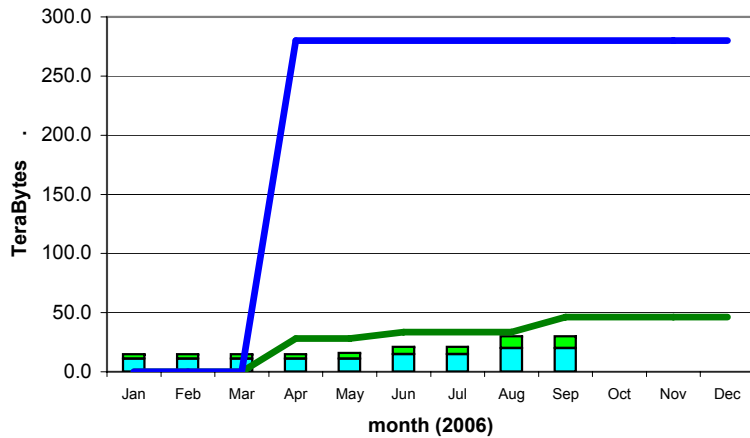
CPU Time Delivered



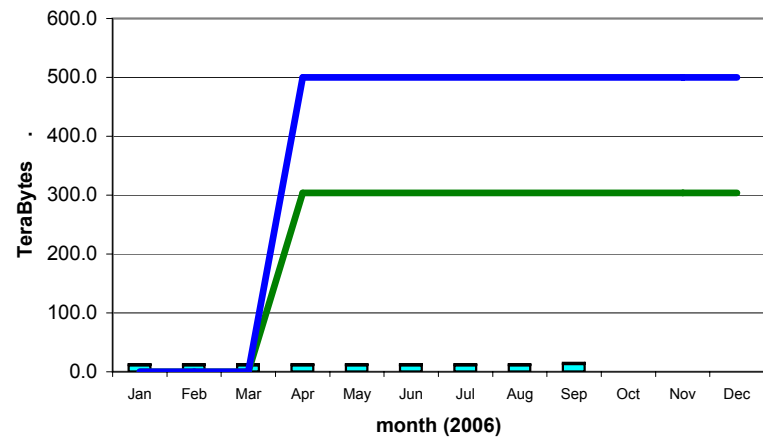
Wall-clock Time Delivered



Disk Storage Used



Tape Storage Used



ALICE █
ATLAS █

CMS █
LHCb █

installed capacity (inc. efficiency factor) —
MoU commitment (inc. efficiency factor) —



WLCG Accounting Summary

September 2006
Centre BNL

data source: site reports to LCG Project Office

Please report accounting data in the shaded cells and return the report to lcg.office@cern.ch

MoU pledges for 2006	
CPU (KSI2K-years)	1,120
Disk (Tbytes)	520
Tape (Tbytes)	300

Standard efficiency factors	
Scheduled cpu used (Tier-0, -1)	85%
Chaotic cpu used (Tier-2)	60%
Disk utilisation	70%
Mass store utilisation	100%

CPU used - KSI2K-days		Jan-06	Feb-06	Mar-06	Apr-06	May-06	Jun-06	Jul-06	Aug-06	Sep-06	Oct-06	Nov-06	Dec-06	MoU * monthly average	aggregate 2006 to date***		
																total	% MoU
CPU Grid	ALICE	cpu														0	
		wall														0	
	ATLAS	cpu	6,115	6,464	5,529	3,185	5,396	7,336	7,849	6,213	3,655					51,742	
		wall	7,177	6,966	6,062	3,439	5,714	8,072	8,050	10,249	7,349					63,078	
	CMS	cpu														0	
		wall														0	
	LHCb	cpu														0	
		wall														0	
	TOTAL	cpu	6,115	6,464	5,529	3,185	5,396	7,336	7,849	6,213	3,655	0	0	0	28,560	51,742	20%
		wall	7,177	6,966	6,062	3,439	5,714	8,072	8,050	10,249	7,349	0	0	0	n/a	63,078	n/a
CPU Non-Grid	ALICE	cpu														0	
		wall														0	
	ATLAS	cpu	9,193	12,778	12,917	12,886	13,317	10,204	8,398	5,113	4,632					89,438	
		wall	11,158	14,568	13,933	14,319	13,887	9,476	8,613	11,692	5,723					103,369	
	CMS	cpu														0	
		wall														0	
	LHCb	cpu														0	
		wall														0	
	TOTAL	cpu	9,193	12,778	12,917	12,886	13,317	10,204	8,398	5,113	4,632	0	0	0	28,560	89,438	35%
		wall	11,158	14,568	13,933	14,319	13,887	9,476	8,613	11,692	5,723	0	0	0	n/a	103,369	n/a
CPU Total	ALICE	cpu														0	
		wall														0	
	ATLAS	cpu	15,308	19,242	18,446	16,071	18,713	17,540	16,247	11,326	8,287					141,180	
		wall	18,335	21,534	19,995	17,758	19,601	17,548	16,663	21,941	13,072					166,447	
	CMS	cpu														0	
		wall														0	
	LHCb	cpu														0	
		wall														0	
	TOTAL	cpu	15,308	19,242	18,446	16,071	18,713	17,540	16,247	11,326	8,287	0	0	0	28,560	141,180	55%
		wall	18,335	21,534	19,995	17,758	19,601	17,548	16,663	21,941	13,072	0	0	0	n/a	166,447	n/a
	installed capacity**				700	700	700	700	700	1,120							
	cpu usage as % installed****	n/a	n/a	n/a	90%	105%	98%	91%	63%	29%	n/a	n/a	n/a				

Notes - cpu tables

- * MoU monthly average - commitment in MoU for KSI2K-days of cpu time per month (includes efficiency factor)
- ** installed capacity - capacity installed (KSI2K)
- *** aggregate 2006 to date - total - KSI2K-days delivered in calendar year to current date
- % MoU - percentage of MoU commitment in calendar year to current date
- **** cpu usage as % installed - includes efficiency factor



WLCG Accounting Summary

September 2006
Centre BNL

data source: site reports to LCG Project Office

Please report accounting data in the shaded cells and return the report to lcg.office@cern.ch

MoU pledges for 2006	
CPU (KSI2K-years)	1,120
Disk (Tbytes)	520
Tape (Tbytes)	300

Standard efficiency factors	
Scheduled cpu used (Tier-0, -1)	85%
Chaotic cpu used (Tier-2)	60%
Disk utilisation	70%
Mass store utilisation	100%

		Jan-06	Feb-06	Mar-06	Apr-06	May-06	Jun-06	Jul-06	Aug-06	Sep-06	Oct-06	Nov-06	Dec-06	MoU*	last month as MoU	%
Disk Space - TBytes	ALICE	allocated														
		used														
	ATLAS	allocated	160	160	160	160	160	160	160	280						
		used	22	26	30	35	38	39	42	46	48					
	CMS	allocated														
		used														
	LHCb	allocated														
		used														
	TOTAL	allocated	160	160	160	160	160	160	160	280	0	0	0	520	54%	
		used	22	26	30	35	38	39	42	46	48	0	0	364	13%	
	installed capacity**				180	180	180	180	180	300						
	disk usage as % installed***	n/a	n/a	n/a	28%	30%	31%	33%	37%	23%	n/a	n/a	n/a			

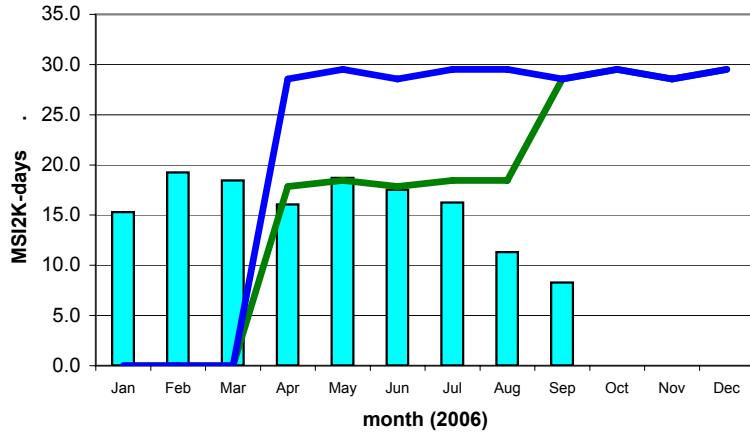
		Jan-06	Feb-06	Mar-06	Apr-06	May-06	Jun-06	Jul-06	Aug-06	Sep-06	Oct-06	Nov-06	Dec-06	MoU*	last month as MoU	%
Tape Space Used - TBytes	ALICE															
	ATLAS	166	185	205	222	242	264	298	328	357						
	CMS															
	LHCb															
	TOTAL	166	185	205	222	242	264	298	328	357	0	0	0	300	119%	
		installed capacity**				300	300	300	420	420	420					
		tape usage as % installed***	n/a	n/a	n/a	74%	81%	88%	71%	78%	85%	n/a	n/a	n/a		

Notes - disk and tape tables
 Space used/allocated at end of the calendar month
 * MoU - commitment in MoU for data storage - includes efficiency factors for space used
 ** installed capacity - capacity installed (TB)
 *** disk/tape usage as % installed - includes efficiency factor

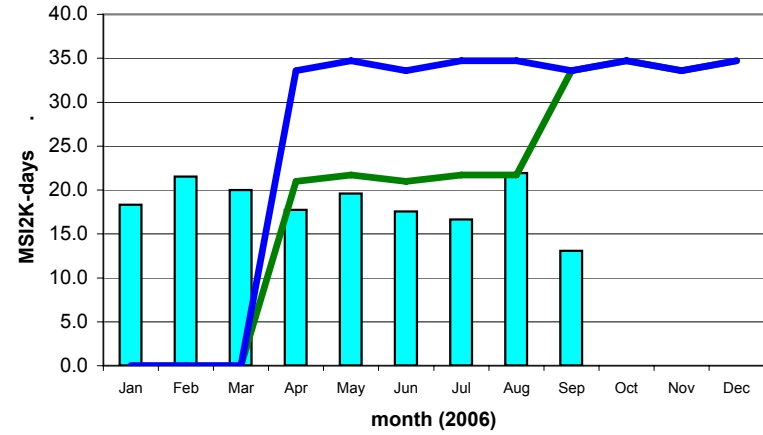
Comments:
 max 255 chars

BNL

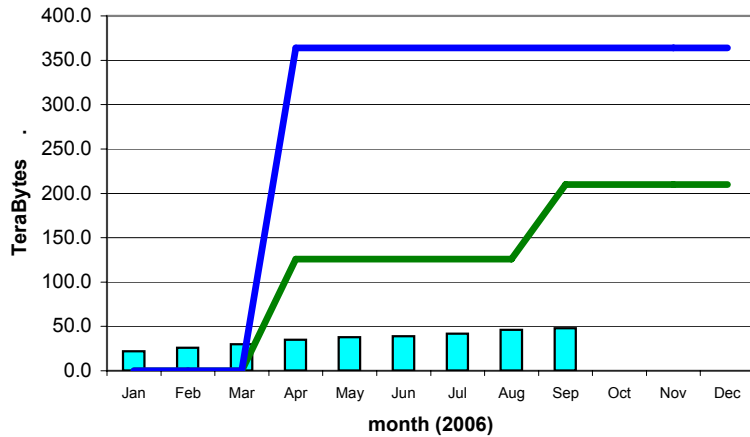
CPU Time Delivered



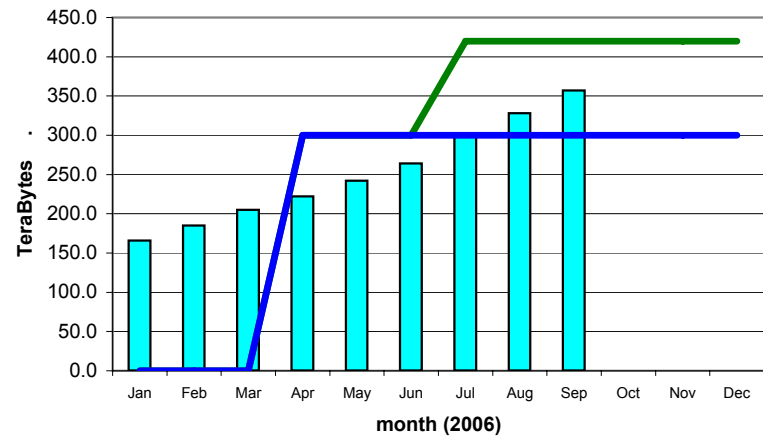
Wall-clock Time Delivered



Disk Storage Used



Tape Storage Used



ALICE █ **CMS** █
ATLAS █ **LHCb** █

installed capacity (inc. efficiency factor) —
MoU commitment (inc. efficiency factor) —



WLCG Accounting Summary

September 2006 data source: site reports to LCG Project Office
Centre CC-IN2P3

Please report accounting data in the shaded cells and return the report to lcg.office@cern.ch

MoU pledges for 2006	
CPU (KSI2K-years)	1,170
Disk (Tbytes)	520
Tape (Tbytes)	535

Standard efficiency factors	
Scheduled cpu used (Tier-0, -1)	85%
Chaotic cpu used (Tier-2)	60%
Disk utilisation	70%
Mass store utilisation	100%

		Jan-06	Feb-06	Mar-06	Apr-06	May-06	Jun-06	Jul-06	Aug-06	Sep-06	Oct-06	Nov-06	Dec-06	MoU * monthly average	aggregate 2006 to date***		
															total	% MoU	
CPU Grid	ALICE	cpu				191	1,115	1,315	1,755	940					5,316		
		wall					231	1,361	1,793	3,033	3,315				9,733		
	ATLAS	cpu	153	1,185	1,664	1,824	2,779	3,906	3,242	2,504	3,137				20,394		
		wall	317	1,301	1,961	2,236	3,425	4,624	4,019	3,501	4,468				25,852		
	CMS	cpu	588	391	192	317	360	200	81	1,249	2,058				5,436		
		wall	781	531	254	369	483	267	110	2,294	2,496				7,585		
	LHCb	cpu	16	133	281	333	935	451	28	14	881				3,072		
		wall	22	194	315	450	1,254	539	67	100	1,393				4,334		
	TOTAL	cpu	757	1,709	2,137	2,474	4,265	5,672	4,666	5,522	7,016	0	0	0	29,835	34,218	13%
		wall	1,120	2,026	2,530	3,055	5,393	6,791	5,989	8,928	11,672	0	0	0	n/a	47,504	n/a
CPU Non-Grid	ALICE	cpu	415	869	201	716	85	815	3	123	398				3,625		
		wall	455	1,020	245	1,048	98	938	2	153	505				4,464		
	ATLAS	cpu	1,310	1,119	717	837	1,001	346	504	2,050	2,134				10,018		
		wall	1,677	1,585	944	1,084	1,943	620	753	2,580	3,649				14,835		
	CMS	cpu	923	3,240	3,045	999	28	14	128						8,377		
		wall	1,493	3,870	4,131	1,400	35	16	144						11,089		
	LHCb	cpu	545	159	888	1,087	1,817	2,296	3,981	2,305	3,174				16,252		
		wall	629	321	1,018	1,337	2,677	2,861	4,599	2,816	3,991				20,249		
	TOTAL	cpu	3,193	5,387	4,851	3,639	2,931	3,471	4,616	4,478	5,706	0	0	0	29,835	38,272	14%
		wall	4,254	6,796	6,338	4,869	4,753	4,435	5,498	5,549	8,145	0	0	0	n/a	50,637	n/a
CPU Total	ALICE	cpu	415	869	201	716	85	815	3	123	398				8,941		
		wall	455	1,020	245	1,048	329	2,299	1,795	3,186	3,820				14,197		
	ATLAS	cpu	1,463	2,304	2,381	2,661	3,780	4,252	3,746	4,554	5,271				30,412		
		wall	1,994	2,886	2,905	3,320	5,368	5,244	4,772	6,081	8,117				40,687		
	CMS	cpu	1,511	3,631	3,237	1,316	388	214	209	1,249	2,058				13,813		
		wall	2,274	4,401	4,385	1,769	518	283	254	2,294	2,496				18,674		
	LHCb	cpu	561	292	1,169	1,420	2,752	2,747	4,009	2,319	4,055				19,324		
		wall	651	515	1,333	1,787	3,931	3,400	4,666	2,916	5,384				24,583		
	TOTAL	cpu	3,950	7,096	6,988	6,113	7,196	9,143	9,282	10,000	12,722	0	0	0	29,835	72,490	27%
		wall	5,374	8,822	8,868	7,924	10,146	11,226	11,487	14,477	19,817	0	0	0	n/a	98,141	n/a
installed capacity**					660	660	660	660	800	1,170							
cpu usage as % installed****		n/a	n/a	n/a	36%	43%	54%	55%	49%	43%	n/a	n/a	n/a				

Notes - cpu tables

- * MoU monthly average - commitment in MoU for KSI2K-days of cpu time per month (includes efficiency factor)
- ** installed capacity - capacity installed (KSI2K)
- *** aggregate 2006 to date - total - KSI2K-days delivered in calendar year to current date
- % MoU - percentage of MoU commitment in calendar year to current date
- **** cpu usage as % installed - includes efficiency factor



WLCG Accounting Summary

September 2006 data source: site reports to LCG Project Office
Centre CC-IN2P3

Please report accounting data in the shaded cells and return the report to lcg.office@cern.ch

MoU pledges for 2006	
CPU (KSI2K-years)	1,170
Disk (Tbytes)	520
Tape (Tbytes)	535

Standard efficiency factors	
Scheduled cpu used (Tier-0, -1)	85%
Chaotic cpu used (Tier-2)	60%
Disk utilisation	70%
Mass store utilisation	100%

		Jan-06	Feb-06	Mar-06	Apr-06	May-06	Jun-06	Jul-06	Aug-06	Sep-06	Oct-06	Nov-06	Dec-06	MoU*	last month as MoU	%
Disk Space - TBytes	ALICE	allocated	16	16	16	16	16	16	18	18						
		used	15	15	15	15	16	15	15	16						
	ATLAS	allocated	10	10	10	14	18	14	18	15	20					
		used	9	9	9	10	18	8	11	14	15					
	CMS	allocated	23	17	18	22	27	28	36	40	35					
		used	11	11	12	15	27	23	15	18	16					
	LHCb	allocated	6	4	4	4	6	5	14	15	14					
		used	3	3	3	3	6	2	3	7	7					
	TOTAL	allocated	55	47	48	56	67	63	84	88	87	0	0	0	520	17%
		used	38	38	39	43	67	48	44	55	54	0	0	0	364	15%
	installed capacity**				55	70	70	84	88	88						
	disk usage as % installed***	n/a	n/a	n/a	112%	137%	98%	75%	89%	88%	n/a	n/a	n/a			

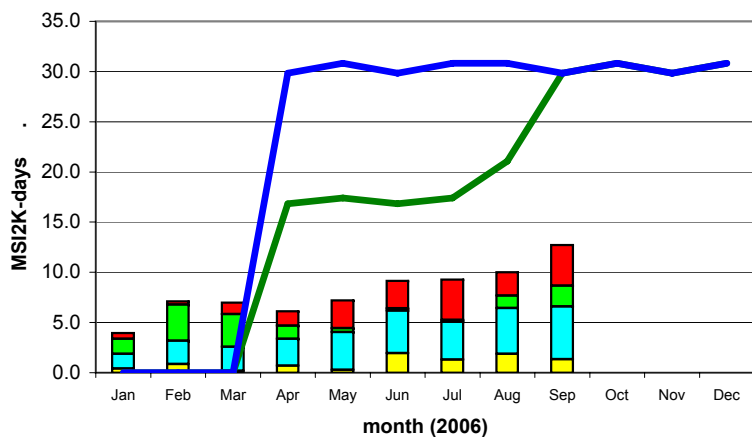
		Jan-06	Feb-06	Mar-06	Apr-06	May-06	Jun-06	Jul-06	Aug-06	Sep-06	Oct-06	Nov-06	Dec-06	MoU*	last month as MoU	%
Tape Space Used - TBytes	ALICE	25	25	25	26	30	31	31	34	34						
	ATLAS	82	82	82	84	90	128	159	126	153						
	CMS	54	56	58	62	67	68	69	76	79						
	LHCb	44	44	45	46	48	50	54	62	64						
	TOTAL	205	207	210	218	235	277	313	298	330	0	0	0	535	62%	
		installed capacity**				218	400	400	400	440	535					
	tape usage as % installed***	n/a	n/a	n/a	100%	59%	69%	78%	68%	62%	n/a	n/a	n/a			

Notes - disk and tape tables
 Space used/allocated at end of the calendar month
 * MoU - commitment in MoU for data storage - includes efficiency factors for space used
 ** installed capacity - capacity installed (TB)
 *** disk/tape usage as % installed - includes efficiency factor

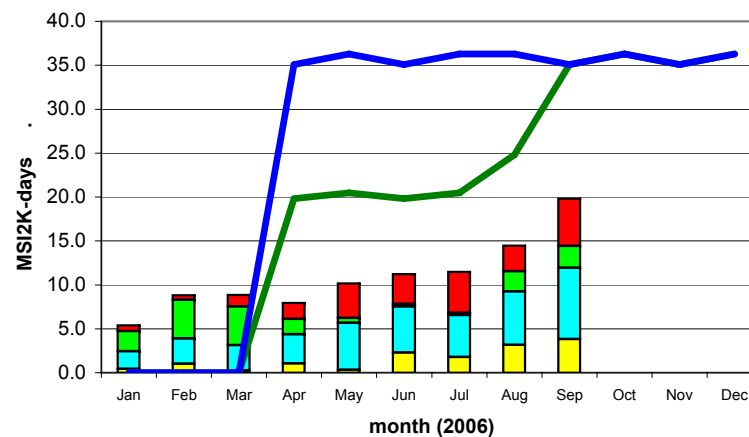
Comments:
max 255 chars

CC-IN2P3

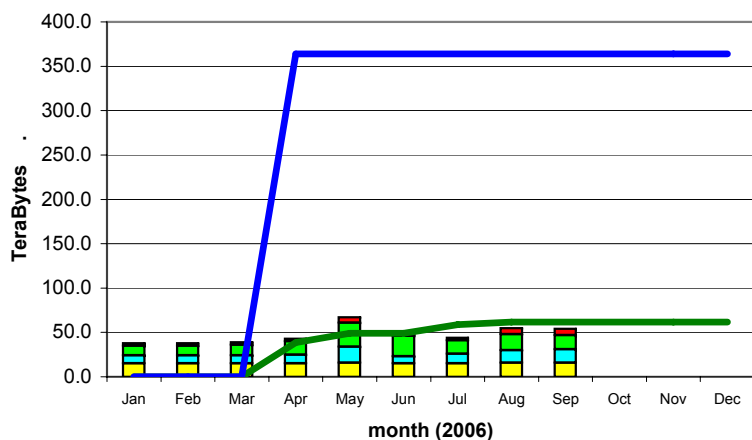
CPU Time Delivered



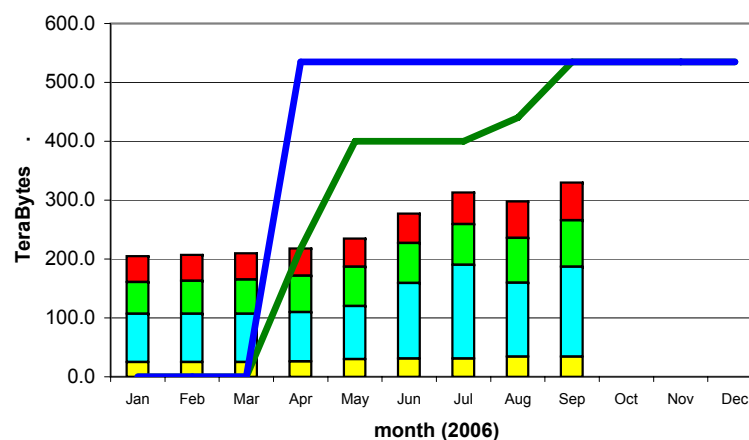
Wall-clock Time Delivered



Disk Storage Used



Tape Storage Used



ALICE		CMS		installed capacity (inc. efficiency factor)	
ATLAS		LHCb		MoU commitment (inc. efficiency factor)	



WLCG Accounting Summary

September 2006

Centre CNAF

data source: site reports to LCG Project Office

Please report accounting data in the shaded cells and return the report to lcg.office@cern.ch

MoU pledges for 2006	
CPU (KSI2K-years)	1,800
Disk (Tbytes)	850
Tape (Tbytes)	850

Standard efficiency factors	
Scheduled cpu used (Tier-0, -1)	85%
Chaotic cpu used (Tier-2)	60%
Disk utilisation	70%
Mass store utilisation	100%

			Jan-06	Feb-06	Mar-06	Apr-06	May-06	Jun-06	Jul-06	Aug-06	Sep-06	Oct-06	Nov-06	Dec-06	MoU * monthly average	aggregate 2006 to date***		
																	total	% MoU
CPU Grid	ALICE	cpu	1,104	592		678	1,882	2,198	2,189	2,219	2,510						13,372	
		wall	1,232	691		795	3,637	3,206	3,657	3,743	6,325							23,288
	ATLAS	cpu	2,243	3,665	2,469	6,200	4,545	4,805	2,270	941	1,344						28,482	
		wall	4,821	4,955	3,000	6,924	5,346	5,655	3,509	1,574	1,851						37,635	
	CMS	cpu	1,321	2,241	621	1,421	94	252	350	4,507	5,622						16,429	
		wall	3,080	3,626	1,627	2,683	162	698	968	6,823	7,537						27,204	
	LHCb	cpu	107	233	453	1,083	6,804	6,090	2,903	8,337	3,242						29,252	
		wall	578	358	684	1,192	10,561	8,084	4,067	9,810	4,104						39,438	
	TOTAL	cpu	4,775	6,731	3,543	9,382	13,325	13,345	7,712	16,004	12,718		0	0	0	45,900	87,535	21%
		wall	9,711	9,630	5,313	11,594	19,706	17,643	12,201	21,950	19,817		0	0	0	n/a	127,565	n/a
CPU Non-Grid	ALICE	cpu			1											1		
		wall			230											230		
	ATLAS	cpu				3										3		
		wall				3										3		
	CMS	cpu	34	8												42		
		wall	42	8												50		
	LHCb	cpu	196	2,104	971	594	160	239	56	1	35					4,356		
		wall	397	2,337	1,152	760	194	318	78	6	57					5,299		
	TOTAL	cpu	230	2,112	972	597	160	239	56	1	35	0	0	0	45,900	4,402	1%	
		wall	439	2,345	1,382	763	194	318	78	6	57	0	0	0	n/a	5,582	n/a	
CPU Total	ALICE	cpu	1,104	592	1	678	1,882	2,198	2,189	2,219	2,510					13,373		
		wall	1,232	691	232	795	3,637	3,206	3,657	3,743	6,325					23,518		
	ATLAS	cpu	2,243	3,665	2,469	6,203	4,545	4,805	2,270	941	1,344					28,485		
		wall	4,821	4,955	3,000	6,927	5,346	5,655	3,509	1,574	1,851					37,638		
	CMS	cpu	1,355	2,249	621	1,421	94	252	350	4,507	5,622					16,471		
		wall	3,122	3,634	1,627	2,683	162	698	968	6,823	7,537					27,254		
	LHCb	cpu	303	2,337	1,424	1,677	6,964	6,329	2,959	8,338	3,277					33,608		
		wall	975	2,695	1,836	1,952	10,755	8,402	4,145	9,816	4,161					44,737		
	TOTAL	cpu	5,005	8,843	4,515	9,979	13,485	13,584	7,768	16,005	12,753	0	0	0	45,900	91,937	22%	
		wall	10,150	11,975	6,695	12,357	19,900	17,961	12,279	21,956	19,874	0	0	0	n/a	133,147	n/a	
		installed capacity**			1,600	1,580	1,580	1,580	1,500	1,450								
		cpu usage as % installed****	n/a	n/a	n/a	24%	33%	34%	19%	42%	34%	n/a	n/a	n/a				

Notes - cpu tables

- * MoU monthly average - commitment in MoU for KSI2K-days of cpu time per month (includes efficiency factor)
- ** installed capacity - capacity installed (KSI2K)
- *** aggregate 2006 to date - total - KSI2K-days delivered in calendar year to current date
- % MoU - percentage of MoU commitment in calendar year to current date
- **** cpu usage as % installed - includes efficiency factor



WLCG Accounting Summary

September 2006

Centre CNAF

data source: site reports to LCG Project Office

Please report accounting data in the shaded cells and return the report to lcg.office@cern.ch

MoU pledges for 2006	
CPU (KSI2K-years)	1,800
Disk (Tbytes)	850
Tape (Tbytes)	850

Standard efficiency factors	
Scheduled cpu used (Tier-0, -1)	85%
Chaotic cpu used (Tier-2)	60%
Disk utilisation	70%
Mass store utilisation	100%

		Jan-06	Feb-06	Mar-06	Apr-06	May-06	Jun-06	Jul-06	Aug-06	Sep-06	Oct-06	Nov-06	Dec-06	MoU*	last month as MoU	%
Disk Space - TBytes	ALICE	allocated	9	9	9	13	13	13	13	16	16					
		used	6	6	6	7	7	7	8	13	15					
	ATLAS	allocated	19	19	19	19	19	27	34	40	40					
		used	8	9	2	5	6	15	16	13	18					
	CMS	allocated	63	63	64	72	72	78	80	86	86					
		used	59	60	62	63	55	62	65	71	75					
	LHCb	allocated	21	21	21	21	21	21	21	26	6					
		used	17	17	16	16	16	5	5	5	6					
	TOTAL	allocated	112	112	113	125	125	139	148	168	148	0	0	0	850	17%
		used	90	92	86	91	84	89	94	102	114	0	0	0	595	19%
		installed capacity**				470	450	450	450	450	450					
		disk usage as % installed***	n/a	n/a	n/a	28%	27%	28%	30%	32%	36%	n/a	n/a	n/a		

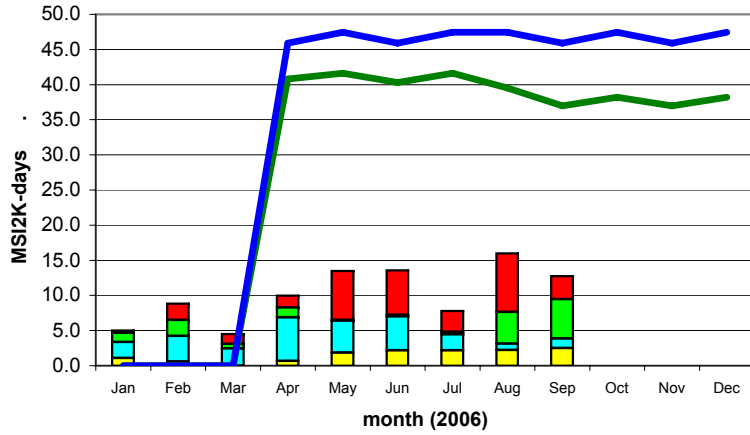
		Jan-06	Feb-06	Mar-06	Apr-06	May-06	Jun-06	Jul-06	Aug-06	Sep-06	Oct-06	Nov-06	Dec-06	MoU*	last month as MoU	%
Tape Space Used - TBytes	ALICE	13	13	13	14	14	14	15	23	24						
	ATLAS	51	50	52	53	55	91	94	94	95						
	CMS	22	22	24	28	28	36	37	37	38						
	LHCb	46	47	54	54	52	52	53	53	54						
	TOTAL	132	132	143	149	149	193	198	207	211	0	0	0	850	25%	
		installed capacity**				560	500	500	500	500	500					
		tape usage as % installed***	n/a	n/a	n/a	27%	30%	39%	40%	41%	42%	n/a	n/a	n/a		

Notes - disk and tape tables
 Space used/allocated at end of the calendar month
 * MoU - commitment in MoU for data storage - includes efficiency factors for space used
 ** installed capacity - capacity installed (TB)
 *** disk/tape usage as % installed - includes efficiency factor

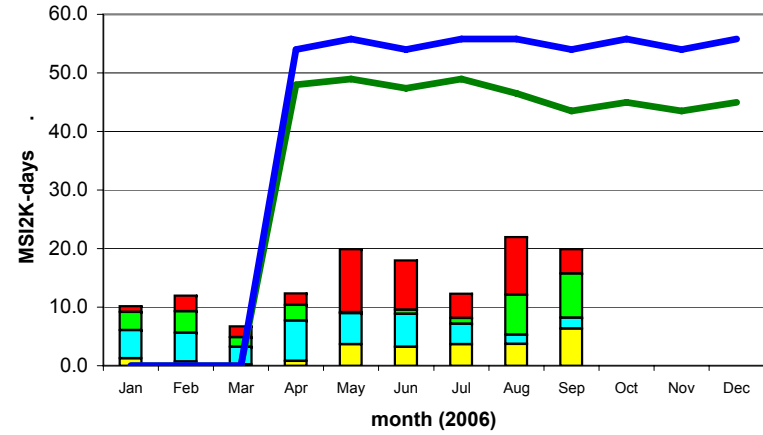
Comments:
 max 255 chars

CNAF

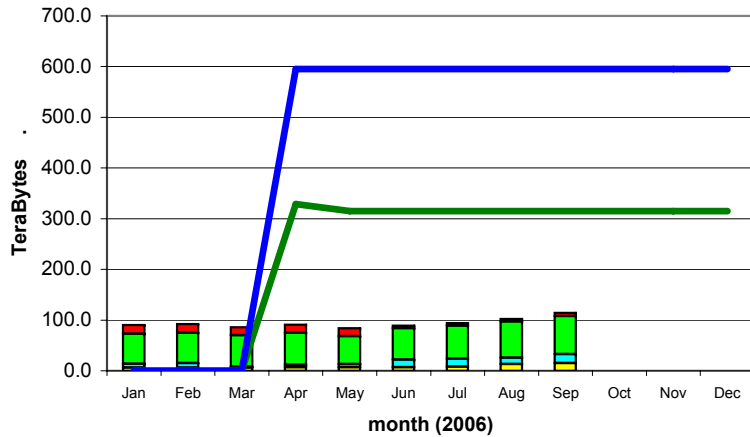
CPU Time Delivered



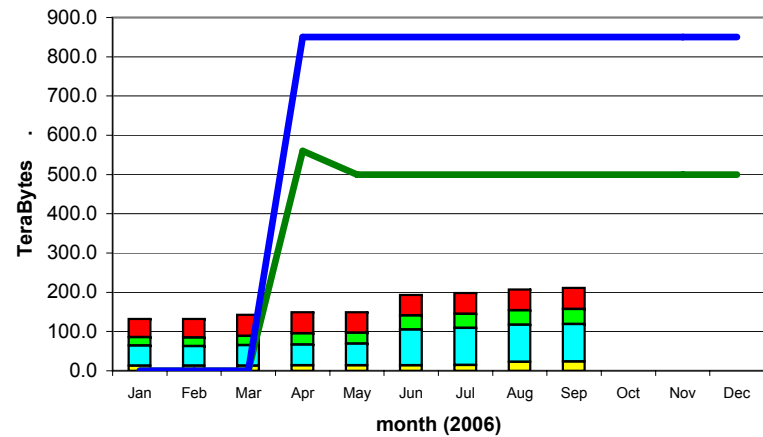
Wall-clock Time Delivered



Disk Storage Used



Tape Storage Used



ALICE █ **CMS** █ installed capacity (inc. efficiency factor) —
ATLAS █ **LHCb** █ MoU commitment (inc. efficiency factor) —



WLCG Accounting Summary

September 2006
Centre FNAL

data source: site reports to LCG Project Office

Please report accounting data in the shaded cells and return the report to lcg.office@cern.ch

MoU pledges for 2006	
CPU (KSI2K-years)	728
Disk (Tbytes)	100
Tape (Tbytes)	250

Standard efficiency factors	
Scheduled cpu used (Tier-0, -1)	85%
Chaotic cpu used (Tier-2)	60%
Disk utilisation	70%
Mass store utilisation	100%

CPU used - KSI2K-days		Jan-06	Feb-06	Mar-06	Apr-06	May-06	Jun-06	Jul-06	Aug-06	Sep-06	Oct-06	Nov-06	Dec-06	MoU * monthly average	aggregate 2006 to date***		
																total	% MoU
CPU Grid	ALICE	cpu														0	
		wall														0	
	ATLAS	cpu	35	370	4,396	3,899	720									9,420	
		wall	64	407	4,835	4,289	4,142									13,737	
	CMS	cpu	232	3,240	4,580	3,994	5,261	6,701	6,701	13,313	20,694					64,716	
		wall	464	6,479	9,160	7,987	64,400	8,060	8,060	16,013	23,798					144,421	
	LHCb	cpu														0	
		wall														0	
	TOTAL	cpu	267	3,610	8,976	7,893	5,981	6,701	6,701	13,313	20,694	0	0	0	18,564	74,136	44%
		wall	528	6,886	13,995	12,276	68,542	8,060	8,060	16,013	23,798	0	0	0	n/a	158,158	n/a
CPU Non-Grid	ALICE	cpu														0	
		wall														0	
	ATLAS	cpu														0	
		wall														0	
	CMS	cpu	1,460	5,390	9,457	8,616	9,915	4,852	4,852	3,231	1,897					49,670	
		wall	1,825	6,738	11,822	10,771	33,620	6,065	6,065	4,038	2,181					83,125	
	LHCb	cpu														0	
		wall														0	
	TOTAL	cpu	1,460	5,390	9,457	8,616	9,915	4,852	4,852	3,231	1,897	0	0	0	18,564	49,670	30%
		wall	1,825	6,738	11,822	10,771	33,620	6,065	6,065	4,038	2,181	0	0	0	n/a	83,125	n/a
CPU Total	ALICE	cpu														0	
		wall														0	
	ATLAS	cpu	35	370	4,396	3,899	720									9,420	
		wall	64	407	4,835	4,289	4,142									13,737	
	CMS	cpu	1,692	8,630	14,037	12,610	15,176	11,553	11,553	16,544	22,591					114,386	
		wall	2,289	13,217	20,982	18,758	98,020	14,125	14,125	20,051	25,979					227,546	
	LHCb	cpu														0	
		wall														0	
	TOTAL	cpu	1,727	9,000	18,433	16,509	15,896	11,553	11,553	16,544	22,591	0	0	0	18,564	123,806	74%
		wall	2,353	13,624	25,817	23,047	102,162	14,125	14,125	20,051	25,979	0	0	0	n/a	241,283	n/a
	installed capacity**				900	900	900	900	900	1,800							
	cpu usage as % installed****	n/a	n/a	n/a	72%	69%	50%	50%	72%	49%	n/a	n/a	n/a				

Notes - cpu tables

- * MoU monthly average - commitment in MoU for KSI2K-days of cpu time per month (includes efficiency factor)
- ** installed capacity - capacity installed (KSI2K)
- *** aggregate 2006 to date - total - KSI2K-days delivered in calendar year to current date
- % MoU - percentage of MoU commitment in calendar year to current date
- **** cpu usage as % installed - includes efficiency factor



WLCG Accounting Summary

September 2006
Centre FNAL

data source: site reports to LCG Project Office

Please report accounting data in the shaded cells and return the report to lcg.office@cern.ch

MoU pledges for 2006	
CPU (KSI2K-years)	728
Disk (Tbytes)	100
Tape (Tbytes)	250

Standard efficiency factors	
Scheduled cpu used (Tier-0, -1)	85%
Chaotic cpu used (Tier-2)	60%
Disk utilisation	70%
Mass store utilisation	100%

		Jan-06	Feb-06	Mar-06	Apr-06	May-06	Jun-06	Jul-06	Aug-06	Sep-06	Oct-06	Nov-06	Dec-06	MoU*	last month as MoU	%
Disk Space - TBytes	ALICE	allocated														
		used														
	ATLAS	allocated														
		used														
	CMS	allocated				111		111	111	400	400					
		used				106		108	108	120	180					
	LHCb	allocated														
		used														
	TOTAL	allocated	0	0	0	111	0	111	111	400	400	0	0	0	100	400%
		used	0	0	0	106	0	108	108	120	180	0	0	0	70	257%
	installed capacity**				100	100	100	100	100	100						
	disk usage as % installed***	n/a	n/a	n/a	151%	0%	154%	154%	n/a	257%	n/a	n/a	n/a			

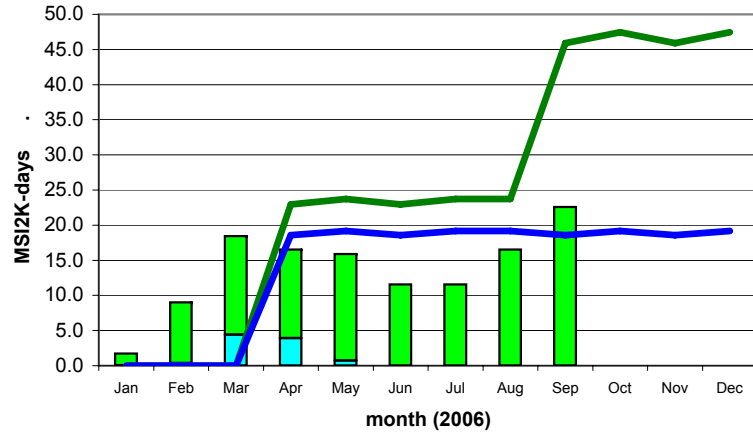
		Jan-06	Feb-06	Mar-06	Apr-06	May-06	Jun-06	Jul-06	Aug-06	Sep-06	Oct-06	Nov-06	Dec-06	MoU*	last month as MoU	%
Tape Space Used - TBytes	ALICE															
	ATLAS															
	CMS			220	280	363	300	300	300	360						
	LHCb															
	TOTAL		0	0	220	280	363	300	300	300	360	0	0	0	250	144%
		installed capacity**				300	300	300	300	300	450					
		tape usage as % installed***	n/a	n/a	n/a	93%	121%	100%	100%	100%	80%	n/a	n/a	n/a		

Notes - disk and tape tables
 Space used/allocated at end of the calendar month
 * MoU - commitment in MoU for data storage - includes efficiency factors for space used
 ** installed capacity - capacity installed (TB)
 *** disk/tape usage as % installed - includes efficiency factor

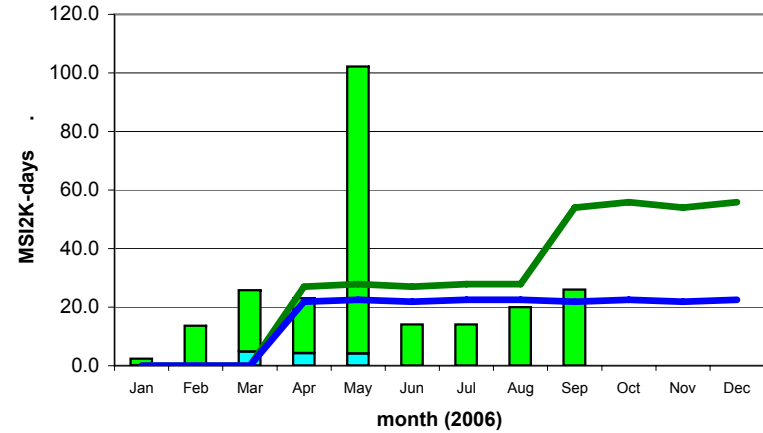
Comments:
max 255 chars

FNAL

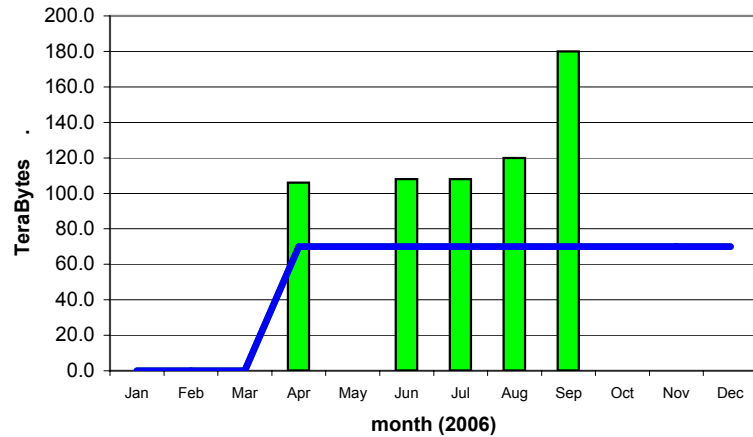
CPU Time Delivered



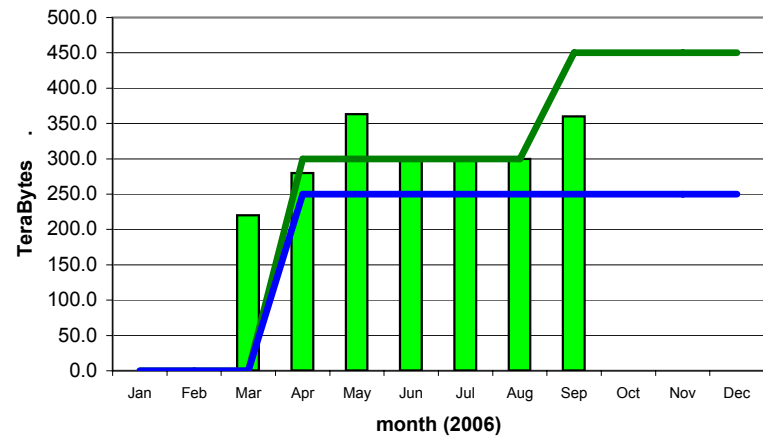
Wall-clock Time Delivered



Disk Storage Used



Tape Storage Used



ALICE █ **CMS** █
ATLAS █ **LHCb** █

installed capacity (inc. efficiency factor) —
MoU commitment (inc. efficiency factor) —



WLCG Accounting Summary

September 2006

data source: site reports to LCG Project Office

Centre FZK-GridKA

Please report accounting data in the shaded cells and return the report to lcg.office@cern.ch

MoU pledges for 2006	
CPU (KSI2K-years)	1,030
Disk (Tbytes)	280
Tape (Tbytes)	393

Standard efficiency factors	
Scheduled cpu used (Tier-0, -1)	85%
Chaotic cpu used (Tier-2)	60%
Disk utilisation	70%
Mass store utilisation	100%

		Jan-06	Feb-06	Mar-06	Apr-06	May-06	Jun-06	Jul-06	Aug-06	Sep-06	Oct-06	Nov-06	Dec-06	MoU * monthly average	aggregate 2006 to date***		
														total	% MoU		
CPU Grid	ALICE	cpu					1,124	580	121	282						2,107	
		wall						2,029	1,024	214	840					4,107	
	ATLAS	cpu	264	2,327	4,946	6,320	871	287	102	164	387					15,668	
		wall	1,087	2,911	3,984	6,631	1,014	436	144	566	474					17,247	
	CMS	cpu	716	1,807	1,506	199	110	102	171	4,717	2,533					11,861	
		wall	2,601	4,583	2,216	1,098	403	179	1,296	8,426	2,676					23,478	
	LHCb	cpu	2	227	559	461	1,329	477	3,028	2,555	65					8,703	
		wall	81	289	317	497	1,646	2,737	3,719	2,883	178					12,347	
	TOTAL	cpu	982	4,361	7,011	6,980	2,310	1,990	3,881	7,557	3,267	0	0	0	26,265	38,339	16%
		wall	3,769	7,783	6,517	8,226	3,063	5,381	6,183	12,089	4,168	0	0	0	n/a	57,179	n/a
CPU Non-Grid	ALICE	cpu	883	1,112					143	428	2,541					5,107	
		wall	1,664	2,429					257	645	9,823					14,818	
	ATLAS	cpu	269	1,887		145	1,486	1,572	646	5,222	5,993					17,220	
		wall	797	2,299		155	1,619	2,057	826	6,905	7,875					22,533	
	CMS	cpu	1,088	1,848		572	27	87	579	2,260	7,890					14,351	
		wall	2,245	2,510		991	71	139	611	7,083	9,520					23,170	
	LHCb	cpu		29		43	7		713	3,066	695					4,553	
		wall	48	41		46	14		1,079	4,233	1,214					6,675	
	TOTAL	cpu	2,240	4,876	0	760	1,520	1,659	2,081	10,976	17,119	0	0	0	26,265	41,231	17%
		wall	4,754	7,279	0	1,192	1,704	2,196	2,773	18,866	28,432	0	0	0	n/a	67,196	n/a
CPU Total	ALICE	cpu	883	1,112				1,124	723	549	2,823					7,214	
		wall	1,664	2,429				2,029	1,281	859	10,663					18,925	
	ATLAS	cpu	533	4,214	4,946	6,465	2,357	1,859	748	5,386	6,380					32,888	
		wall	1,884	5,210	3,984	6,786	2,633	2,493	970	7,471	8,349					39,780	
	CMS	cpu	1,804	3,655	1,506	771	137	189	750	6,977	10,423					26,212	
		wall	4,846	7,093	2,216	2,089	474	318	1,907	15,509	12,196					46,648	
	LHCb	cpu	2	256	559	504	1,336	477	3,741	5,621	760					13,256	
		wall	129	330	317	543	1,660	2,737	4,798	7,116	1,392					19,022	
	TOTAL	cpu	3,222	9,237	7,011	7,740	3,830	3,649	5,962	18,533	20,386	0	0	0	26,265	79,570	34%
		wall	8,523	15,062	6,517	9,418	4,767	7,577	8,956	30,955	32,600	0	0	0	n/a	124,375	n/a
installed capacity**					533	533	533	533	1,027	1,027							
cpu usage as % installed****		n/a	n/a	n/a	57%	28%	27%	44%	71%	78%	n/a	n/a	n/a				

Notes - cpu tables

- * MoU monthly average - commitment in MoU for KSI2K-days of cpu time per month (includes efficiency factor)
- ** installed capacity - capacity installed (KSI2K)
- *** aggregate 2006 to date - total - KSI2K-days delivered in calendar year to current date
- % MoU - percentage of MoU commitment in calendar year to current date
- **** cpu usage as % installed - includes efficiency factor



WLCG Accounting Summary

September 2006 data source: site reports to LCG Project Office
Centre FZK-GridKA

Please report accounting data in the shaded cells and return the report to lcg.office@cern.ch

MoU pledges for 2006	
CPU (KSI2K-years)	1,030
Disk (Tbytes)	280
Tape (Tbytes)	393

Standard efficiency factors	
Scheduled cpu used (Tier-0, -1)	85%
Chaotic cpu used (Tier-2)	60%
Disk utilisation	70%
Mass store utilisation	100%

		Jan-06	Feb-06	Mar-06	Apr-06	May-06	Jun-06	Jul-06	Aug-06	Sep-06	Oct-06	Nov-06	Dec-06	MoU*	last month as MoU	%
Disk Space - TBytes	ALICE	allocated	29	29	29	27	27	28	34	31	33					
		used				14	14	6	6	12	8					
	ATLAS	allocated	21	21	21	23	23	33	29	30	67					
		used				11	11	27	11	17	26					
	CMS	allocated	21	21	21	28	28	26	32	48	87					
		used				14	15	20	7	18	26					
	LHCb	allocated	12	12	12	12	12	15	18	23	25					
		used				4	4	2	2	8	7					
	TOTAL	allocated	83	83	83	90	90	102	113	132	212	0	0	0	280	76%
		used	0	0	0	43	44	55	26	55	67	0	0	0	196	34%
		installed capacity**				90	90	102	113	284	284					
		disk usage as % installed***	n/a	n/a	n/a	68%	70%	77%	33%	28%	34%	n/a	n/a	n/a		

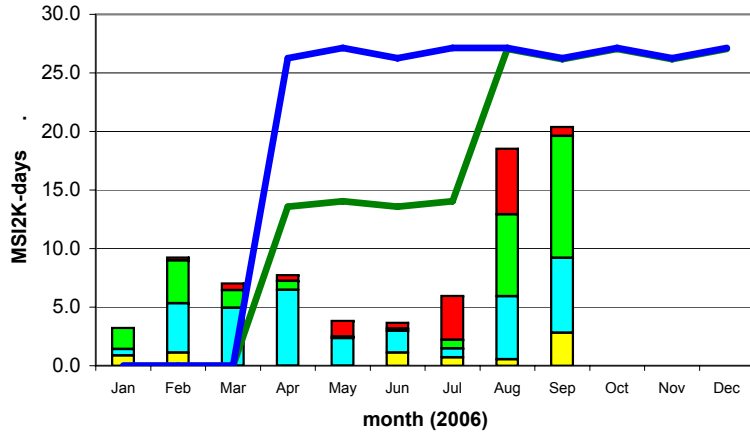
		Jan-06	Feb-06	Mar-06	Apr-06	May-06	Jun-06	Jul-06	Aug-06	Sep-06	Oct-06	Nov-06	Dec-06	MoU*	last month as MoU	%
Tape Space Used - TBytes	ALICE				2	2	1	3	30	37						
	ATLAS				13	13	26	68	101	115						
	CMS				78	78	81	75	113	99						
	LHCb				3	3	5	5	16	10						
	TOTAL	0	0	0	96	96	113	151	260	261	0	0	0	393	66%	
		installed capacity**				393	393	393	393	393	393					
		tape usage as % installed***	n/a	n/a	n/a	24%	24%	29%	38%	66%	66%	n/a	n/a	n/a		

Notes - disk and tape tables
 Space used/allocated at end of the calendar month
 * MoU - commitment in MoU for data storage - includes efficiency factors for space used
 ** installed capacity - capacity installed (TB)
 *** disk/tape usage as % installed - includes efficiency factor

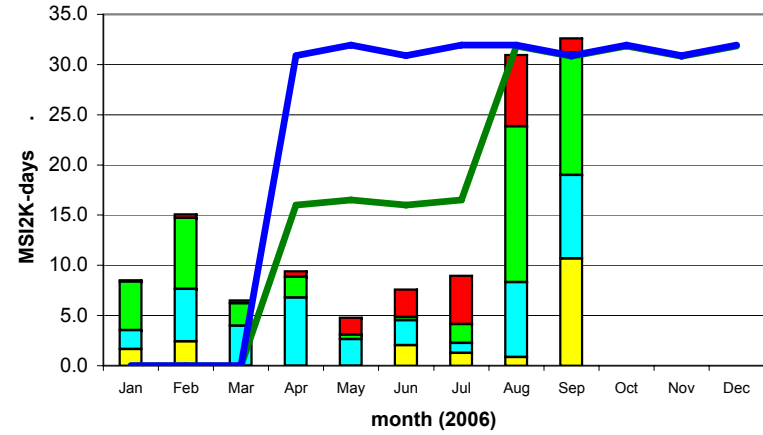
Comments:
 max 255 chars
 The grid used CPU and wall time published for GridKa through APEL to the GOC DB in August & September are about 20% too high (wrong parameter of kSI2k/CPU-core). This has been corrected in the tables above.

FZK-GridKA

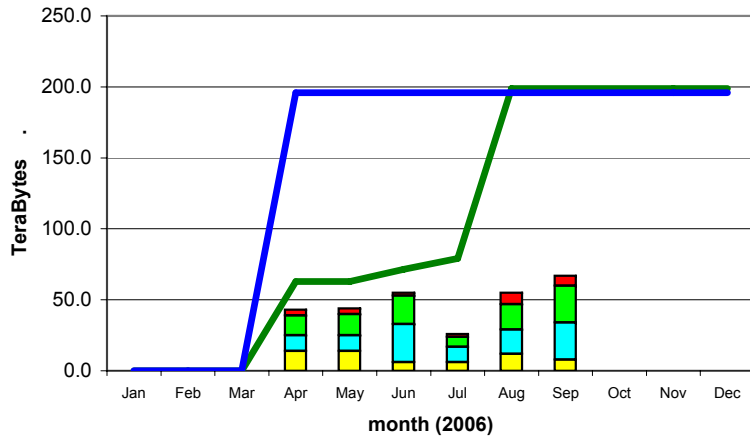
CPU Time Delivered



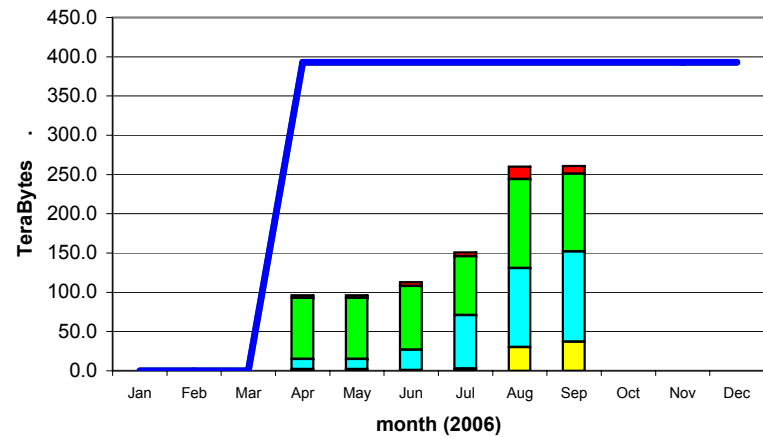
Wall-clock Time Delivered



Disk Storage Used



Tape Storage Used



ALICE █
ATLAS █

CMS █
LHCb █

installed capacity (inc. efficiency factor) —
MoU commitment (inc. efficiency factor) —



WLCG Accounting Summary

September 2006

data source: site reports to LCG Project Office

Centre NDGF

Please report accounting data in the shaded cells and return the report to lcg.office@cern.ch

MoU pledges for 2006	
CPU (KSI2K-years)	567
Disk (Tbytes)	170
Tape (Tbytes)	240

Standard efficiency factors	
Scheduled cpu used (Tier-0, -1)	85%
Chaotic cpu used (Tier-2)	60%
Disk utilisation	70%
Mass store utilisation	100%

CPU used - KSI2K-days

		Jan-06	Feb-06	Mar-06	Apr-06	May-06	Jun-06	Jul-06	Aug-06	Sep-06	Oct-06	Nov-06	Dec-06	MoU * monthly average	aggregate 2006 to date***		
														total	% MoU		
CPU Grid	ALICE	cpu								1	297					298	
		wall								1	314					315	
	ATLAS	cpu				5,200	5,220	4,309	1,950	819	1,263					18,761	
		wall				5,500	5,550	4,615	2,145	901	1,389					20,100	
	CMS	cpu														0	
		wall														0	
	LHCb	cpu														0	
		wall														0	
	TOTAL	cpu	0	0	0	5,200	5,220	4,309	1,950	820	1,560	0	0	0	14,459	19,059	15%
		wall	0	0	0	5,500	5,550	4,615	2,145	902	1,703	0	0	0	n/a	20,415	n/a
CPU Non-Grid	ALICE	cpu														0	
		wall														0	
	ATLAS	cpu														0	
		wall														0	
	CMS	cpu														0	
		wall														0	
	LHCb	cpu														0	
		wall														0	
	TOTAL	cpu	0	0	0	0	0	0	0	0	0	0	0	0	14,459	0	0%
		wall	0	0	0	0	0	0	0	0	0	0	0	0	n/a	0	n/a
CPU Total	ALICE	cpu								1	297					298	
		wall								1	314					315	
	ATLAS	cpu				5,200	5,220	4,309	1,950	819	1,263					18,761	
		wall				5,500	5,550	4,615	2,145	901	1,389					20,100	
	CMS	cpu														0	
		wall														0	
	LHCb	cpu														0	
		wall														0	
	TOTAL	cpu	0	0	0	5,200	5,220	4,309	1,950	820	1,560	0	0	0	14,459	19,059	15%
		wall	0	0	0	5,500	5,550	4,615	2,145	902	1,703	0	0	0	n/a	20,415	n/a
installed capacity**					408	408	408	408	408	408							
cpu usage as % installed****		n/a	n/a	n/a	50%	50%	41%	19%	8%	15%	n/a	n/a	n/a				

Notes - cpu tables

- * MoU monthly average - commitment in MoU for KSI2K-days of cpu time per month (includes efficiency factor)
- ** installed capacity - capacity installed (KSI2K)
- *** aggregate 2006 to date - total - KSI2K-days delivered in calendar year to current date
- % MoU - percentage of MoU commitment in calendar year to current date
- **** cpu usage as % installed - includes efficiency factor



WLCG Accounting Summary

September 2006

data source: site reports to LCG Project Office

Centre NDGF

Please report accounting data in the shaded cells and return the report to lcg.office@cern.ch

MoU pledges for 2006	
CPU (KSI2K-years)	567
Disk (Tbytes)	170
Tape (Tbytes)	240

Standard efficiency factors	
Scheduled cpu used (Tier-0, -1)	85%
Chaotic cpu used (Tier-2)	60%
Disk utilisation	70%
Mass store utilisation	100%

		Jan-06	Feb-06	Mar-06	Apr-06	May-06	Jun-06	Jul-06	Aug-06	Sep-06	Oct-06	Nov-06	Dec-06	MoU*	last month as MoU	%
Disk Space - TBytes	ALICE	allocated														
		used								1						
	ATLAS	allocated														
		used				40	41	43	45	44	28					
	CMS	allocated														
		used														
	LHCb	allocated														
		used														
	TOTAL	allocated	0	0	0	0	0	0	0	0	0	0	0	0	170	0%
		used	0	0	0	40	41	43	45	44	29	0	0	0	119	24%
	installed capacity**				104	104	104	104	104	104						
	disk usage as % installed***	n/a	n/a	n/a	55%	56%	59%	62%	60%	40%	n/a	n/a	n/a			

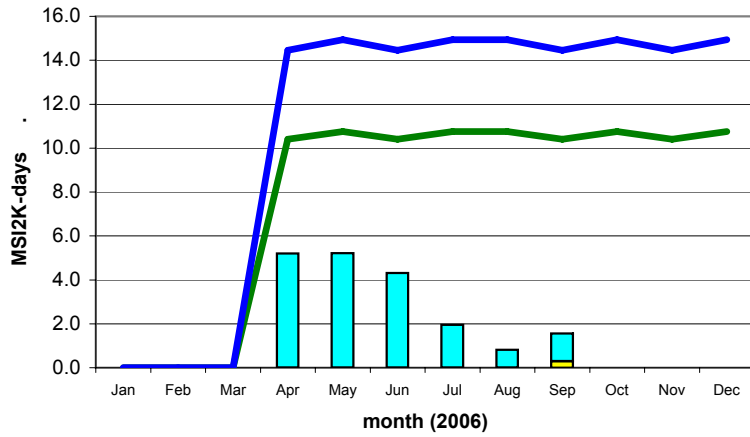
		Jan-06	Feb-06	Mar-06	Apr-06	May-06	Jun-06	Jul-06	Aug-06	Sep-06	Oct-06	Nov-06	Dec-06	MoU*	last month as MoU	%
Tape Space Used - TBytes	ALICE															
	ATLAS															
	CMS															
	LHCb															
	TOTAL		0	0	0	0	0	0	0	0	0	0	0	240	0%	
		installed capacity**				186	186	186	186	186	186					
		tape usage as % installed***	n/a	n/a	n/a	0%	0%	0%	0%	0%	0%	n/a	n/a	n/a		

Notes - disk and tape tables
 Space used/allocated at end of the calendar month
 * MoU - commitment in MoU for data storage - includes efficiency factors for space used
 ** installed capacity - capacity installed (TB)
 *** disk/tape usage as % installed - includes efficiency factor

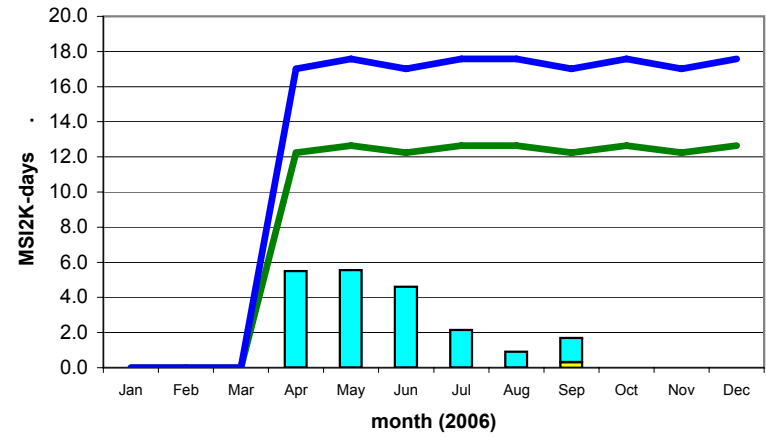
Comments:
 max 255 chars

NDGF

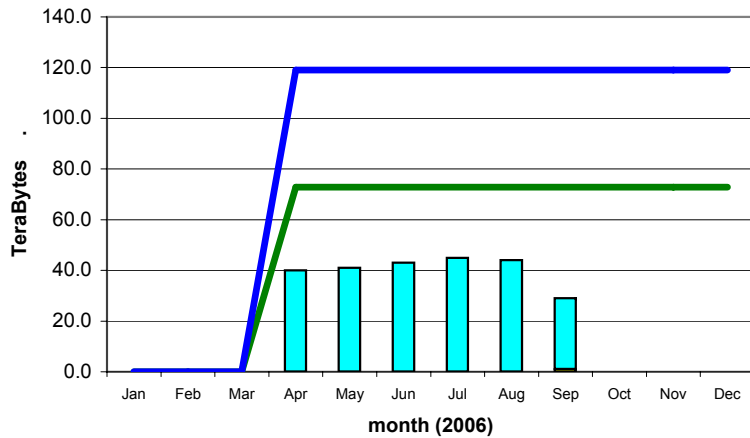
CPU Time Delivered



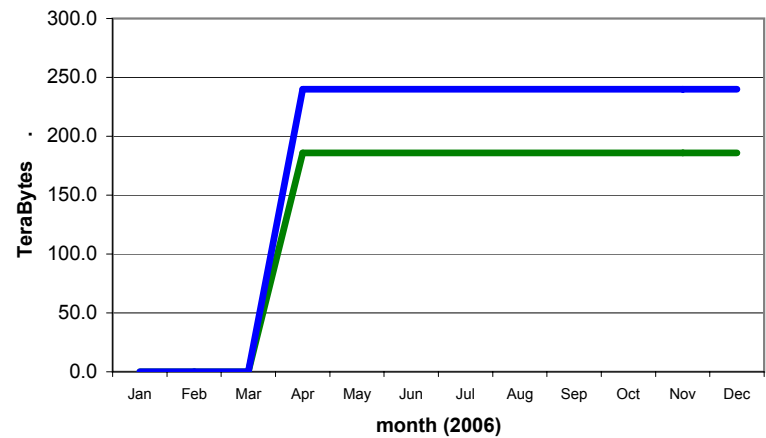
Wall-clock Time Delivered



Disk Storage Used



Tape Storage Used



ALICE		CMS		installed capacity (inc. efficiency factor)	
ATLAS		LHCb		MoU commitment (inc. efficiency factor)	



WLCG Accounting Summary

September 2006 data source: site reports to LCG Project Office
Centre NL LHC/Tier-1

Please report accounting data in the shaded cells and return the report to lcg.office@cern.ch

MoU pledges for 2006	
CPU (KSI2K-years)	306
Disk (Tbytes)	170
Tape (Tbytes)	143

Standard efficiency factors	
Scheduled cpu used (Tier-0, -1)	85%
Chaotic cpu used (Tier-2)	60%
Disk utilisation	70%
Mass store utilisation	100%

CPU used - KSI2K-days			Jan-06	Feb-06	Mar-06	Apr-06	May-06	Jun-06	Jul-06	Aug-06	Sep-06	Oct-06	Nov-06	Dec-06	MoU * monthly average	aggregate 2006 to date***			
																	total	% MoU	
CPU Grid	ALICE	cpu	33	54		63	146	973	540	1,317	1,188						4,314		
		wall	33	54		63	269	985	807	2,014	1,917						6,142		
	ATLAS	cpu	1,413	3,106	3,191	1,977	2,346	4,097	1,313	2,025	2,816						22,284		
		wall	2,081	3,503	3,873	2,052	2,693	4,409	1,631	3,864	4,002						28,108		
	CMS	cpu	144		138	146	64	33	107	147	222						1,001		
		wall	145		138	146	64	33	108	147	226						1,007		
	LHCb	cpu	231	180	1,040	397	2,190	1,142	2,800	3,432	6,742						18,154		
		wall	266	214	1,139	412	2,391	1,222	3,198	3,754	7,147						19,743		
	TOTAL	cpu	1,821	3,340	4,369	2,583	4,746	6,245	4,760	6,921	10,968		0	0	0	7,803	45,753	65%	
		wall	2,525	3,771	5,150	2,673	5,417	6,649	5,744	9,779	13,292		0	0	0	n/a	55,000	n/a	
	CPU Non-Grid	ALICE	cpu								290	108						398	
			wall								300	117						417	
ATLAS		cpu															0		
		wall															0		
CMS		cpu															0		
		wall															0		
LHCb		cpu															0		
		wall															0		
TOTAL		cpu	0	0	0	0	0	0	0	0	290	108	0	0	0	7,803	398	1%	
		wall	0	0	0	0	0	0	0	0	300	117	0	0	0	n/a	417	n/a	
CPU Total		ALICE	cpu	33	54		63	146	973	540	1,607	1,296						4,712	
			wall	33	54		63	269	985	807	2,314	2,034						6,559	
	ATLAS	cpu	1,413	3,106	3,191	1,977	2,346	4,097	1,313	2,025	2,816						22,284		
		wall	2,081	3,503	3,873	2,052	2,693	4,409	1,631	3,864	4,002						28,108		
	CMS	cpu	144		138	146	64	33	107	147	222						1,001		
		wall	145		138	146	64	33	108	147	226						1,007		
	LHCb	cpu	231	180	1,040	397	2,190	1,142	2,800	3,432	6,742						18,154		
		wall	266	214	1,139	412	2,391	1,222	3,198	3,754	7,147						19,743		
	TOTAL	cpu	1,821	3,340	4,369	2,583	4,746	6,245	4,760	7,211	11,076		0	0	0	7,803	46,151	66%	
		wall	2,525	3,771	5,150	2,673	5,417	6,649	5,744	10,079	13,409		0	0	0	n/a	55,417	n/a	
	installed capacity**					214	214	165	165	459	459								
	cpu usage as % installed****		n/a	n/a	n/a	47%	87%	148%	113%	62%	95%	n/a	n/a	n/a	n/a				

Notes - cpu tables

- * MoU monthly average - commitment in MoU for KSI2K-days of cpu time per month (includes efficiency factor)
- ** installed capacity - capacity installed (KSI2K)
- *** aggregate 2006 to date - total - KSI2K-days delivered in calendar year to current date
- % MoU - percentage of MoU commitment in calendar year to current date
- **** cpu usage as % installed - includes efficiency factor



WLCG Accounting Summary

September 2006 data source: site reports to LCG Project Office
Centre NL LHC/Tier-1

Please report accounting data in the shaded cells and return the report to lcg.office@cern.ch

MoU pledges for 2006	
CPU (KSI2K-years)	306
Disk (Tbytes)	170
Tape (Tbytes)	143

Standard efficiency factors	
Scheduled cpu used (Tier-0, -1)	85%
Chaotic cpu used (Tier-2)	60%
Disk utilisation	70%
Mass store utilisation	100%

		Jan-06	Feb-06	Mar-06	Apr-06	May-06	Jun-06	Jul-06	Aug-06	Sep-06	Oct-06	Nov-06	Dec-06	MoU*	last month as MoU	%
Disk Space - TBytes	ALICE	allocated					1	4	2	2						
		used						3								
	ATLAS	allocated	2	2	2	2	2	5	7	10						
		used	1	1	1	1	1	4	6	5	10					
	CMS	allocated														
		used														
	LHCb	allocated	1	1	1	1	2	4	6	6	6					
		used				1	1	1	3	2	2					
	TOTAL	allocated	3	3	3	3	4	10	17	15	18	0	0	0	170	11%
		used	1	1	1	2	2	5	12	7	12	0	0	0	119	10%
	installed capacity**				15	4	15	18	16	17						
	disk usage as % installed***	n/a	n/a	n/a	19%	71%	48%	95%	63%	101%	n/a	n/a	n/a			

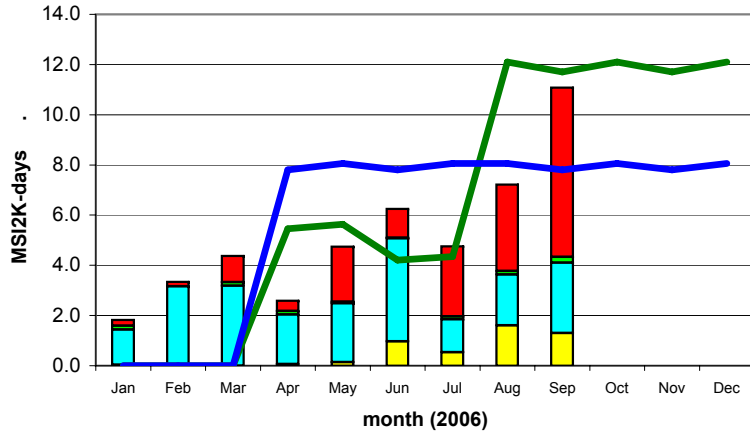
		Jan-06	Feb-06	Mar-06	Apr-06	May-06	Jun-06	Jul-06	Aug-06	Sep-06	Oct-06	Nov-06	Dec-06	MoU*	last month as MoU	%
Tape Space Used - TBytes	ALICE															
	ATLAS				10	18	18	18	18	18						
	CMS															
	LHCb				3	4	4	5	4	4						
	TOTAL	0	0	0	13	22	22	23	22	22	0	0	0	143	15%	
		installed capacity**				130	50	50	23	50	22					
		tape usage as % installed***	n/a	n/a	n/a	10%	44%	44%	100%	44%	100%	n/a	n/a	n/a		

Notes - disk and tape tables
 Space used/allocated at end of the calendar month
 * MoU - commitment in MoU for data storage - includes efficiency factors for space used
 ** installed capacity - capacity installed (TB)
 *** disk/tape usage as % installed - includes efficiency factor

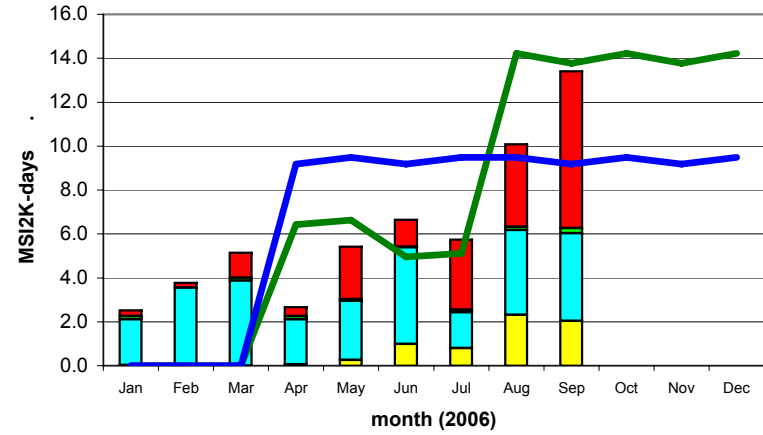
Comments:
max 255 chars

NL LHC-Tier-1

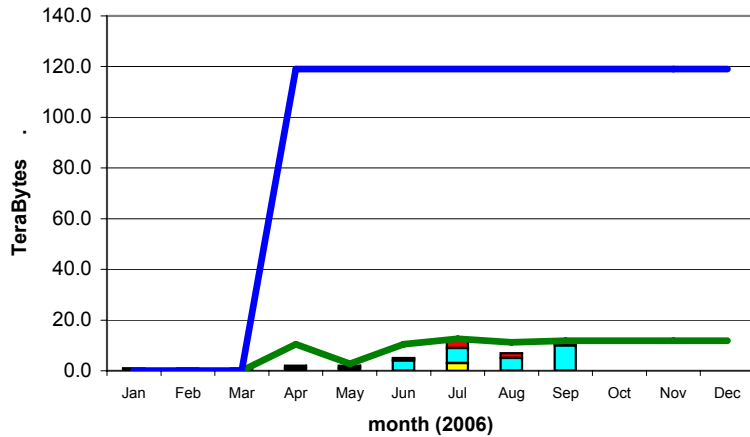
CPU Time Delivered



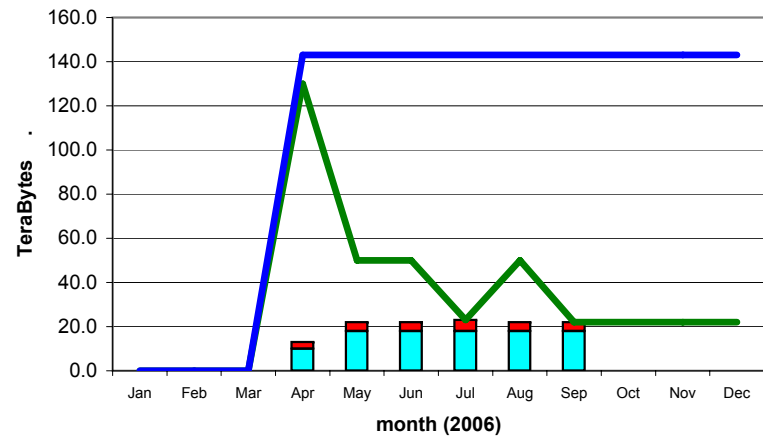
Wall-clock Time Delivered



Disk Storage Used



Tape Storage Used



ALICE █
ATLAS █

CMS █
LHCb █

installed capacity (inc. efficiency factor) —

MoU commitment (inc. efficiency factor) —



WLCG Accounting Summary

September 2006
Centre PIC

data source: site reports to LCG Project Office

Please report accounting data in the shaded cells and return the report to lcg.office@cern.ch

MoU pledges for 2006	
CPU (KSI2K-years)	250
Disk (Tbytes)	140
Tape (Tbytes)	158

Standard efficiency factors	
Scheduled cpu used (Tier-0, -1)	85%
Chaotic cpu used (Tier-2)	60%
Disk utilisation	70%
Mass store utilisation	100%

CPU used - KSI2K-days		Jan-06	Feb-06	Mar-06	Apr-06	May-06	Jun-06	Jul-06	Aug-06	Sep-06	Oct-06	Nov-06	Dec-06	MoU * monthly average	aggregate 2006 to date***		
																total	% MoU
CPU Grid	ALICE	cpu														0	
		wall														0	
	ATLAS	cpu	781	1,944	1,245	1,214	738	1,076	1,263	1,144	772					10,177	
		wall	869	2,070	1,467	1,300	1,018	1,253	1,369	1,436	908					11,690	
	CMS	cpu	1,431	761	518	512	729	795	1,383	2,001	1,212					9,342	
		wall	2,976	871	1,123	683	875	1,094	1,817	2,063	1,278					12,780	
	LHCb	cpu	207	288	861	264	721	1,321	937	1,604	1,701					7,904	
		wall	686	526	1,006	286	1,025	1,495	1,047	1,731	1,788					9,590	
	TOTAL	cpu	2,419	2,993	2,624	1,990	2,188	3,192	3,583	4,749	3,685	0	0	0	6,375	27,423	48%
		wall	4,531	3,467	3,596	2,269	2,918	3,842	4,233	5,230	3,974	0	0	0	n/a	34,060	n/a
CPU Non-Grid	ALICE	cpu														0	
		wall														0	
	ATLAS	cpu														0	
		wall														0	
	CMS	cpu														0	
		wall														0	
	LHCb	cpu														0	
		wall														0	
	TOTAL	cpu	0	0	0	0	0	0	0	0	0	0	0	0	6,375	0	0%
		wall	0	0	0	0	0	0	0	0	0	0	0	0	n/a	0	n/a
CPU Total	ALICE	cpu														0	
		wall														0	
	ATLAS	cpu	781	1,944	1,245	1,214	738	1,076	1,263	1,144	772					10,177	
		wall	869	2,070	1,467	1,300	1,018	1,253	1,369	1,436	908					11,690	
	CMS	cpu	1,431	761	518	512	729	795	1,383	2,001	1,212					9,342	
		wall	2,976	871	1,123	683	875	1,094	1,817	2,063	1,278					12,780	
	LHCb	cpu	207	288	861	264	721	1,321	937	1,604	1,701					7,904	
		wall	686	526	1,006	286	1,025	1,495	1,047	1,731	1,788					9,590	
	TOTAL	cpu	2,419	2,993	2,624	1,990	2,188	3,192	3,583	4,749	3,685	0	0	0	6,375	27,423	48%
		wall	4,531	3,467	3,596	2,269	2,918	3,842	4,233	5,230	3,974	0	0	0	n/a	34,060	n/a
installed capacity**					150	150	150	150	150	150							
cpu usage as % installed****		n/a	n/a	n/a	52%	57%	83%	94%	124%	96%	n/a	n/a	n/a				

Notes - cpu tables

- * MoU monthly average - commitment in MoU for KSI2K-days of cpu time per month (includes efficiency factor)
- ** installed capacity - capacity installed (KSI2K)
- *** aggregate 2006 to date - total - KSI2K-days delivered in calendar year to current date
- % MoU - percentage of MoU commitment in calendar year to current date
- **** cpu usage as % installed - includes efficiency factor



WLCG Accounting Summary

September 2006
Centre PIC

data source: site reports to LCG Project Office

Please report accounting data in the shaded cells and return the report to lcg.office@cern.ch

MoU pledges for 2006	
CPU (KSI2K-years)	250
Disk (Tbytes)	140
Tape (Tbytes)	158

Standard efficiency factors	
Scheduled cpu used (Tier-0, -1)	85%
Chaotic cpu used (Tier-2)	60%
Disk utilisation	70%
Mass store utilisation	100%

		Jan-06	Feb-06	Mar-06	Apr-06	May-06	Jun-06	Jul-06	Aug-06	Sep-06	Oct-06	Nov-06	Dec-06	MoU*	last month as MoU	%
Disk Space - TBytes	ALICE	allocated														
		used														
	ATLAS	allocated					3	7	7	9						
		used					3	7	7	8						
	CMS	allocated	10	10	10	10	10	10	11	11	37					
		used	10	10	10	10	10	8	8	8	2					
	LHCb	allocated	1	1	1	1	1	3	3	3	3					
		used	1	1	1	1	1	1								
	TOTAL	allocated	11	11	11	11	11	16	21	21	49	0	0	0	140	35%
		used	11	11	11	11	11	12	15	15	10	0	0	0	98	10%
	installed capacity**				11	11	16	21	21	49						
	disk usage as % installed***	n/a	n/a	n/a	143%	143%	107%	102%	102%	29%	n/a	n/a	n/a			

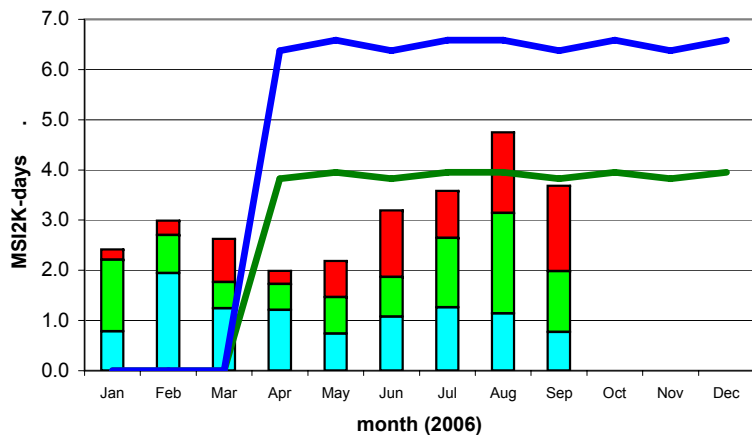
		Jan-06	Feb-06	Mar-06	Apr-06	May-06	Jun-06	Jul-06	Aug-06	Sep-06	Oct-06	Nov-06	Dec-06	MoU*	last month as MoU	%
Tape Space Used - TBytes	ALICE															
	ATLAS				38	40	53	54	54	54						
	CMS				27	27	27	27	32	37						
	LHCb				29	30	29	18	20	24						
	TOTAL	0	0	0	94	97	109	99	106	115	0	0	0	158	73%	
		installed capacity**				107	109	122	111	115	123					
		tape usage as % installed***	n/a	n/a	n/a	88%	89%	89%	89%	92%	93%	n/a	n/a	n/a		

Notes - disk and tape tables
 Space used/allocated at end of the calendar month
 * MoU - commitment in MoU for data storage - includes efficiency factors for space used
 ** installed capacity - capacity installed (TB)
 *** disk/tape usage as % installed - includes efficiency factor

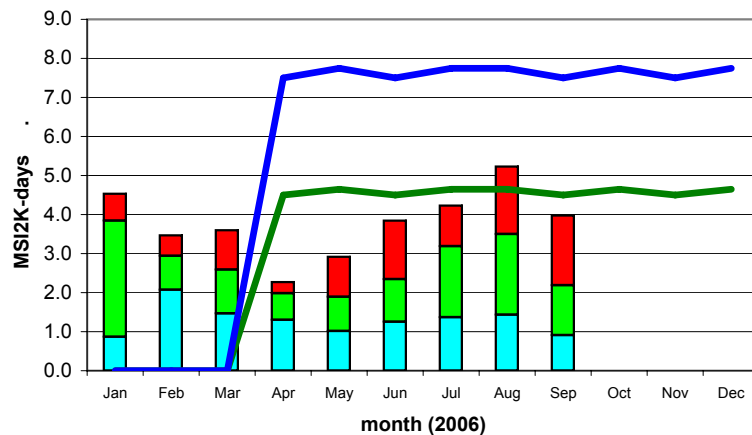
Comments:
max 255 chars

PIC

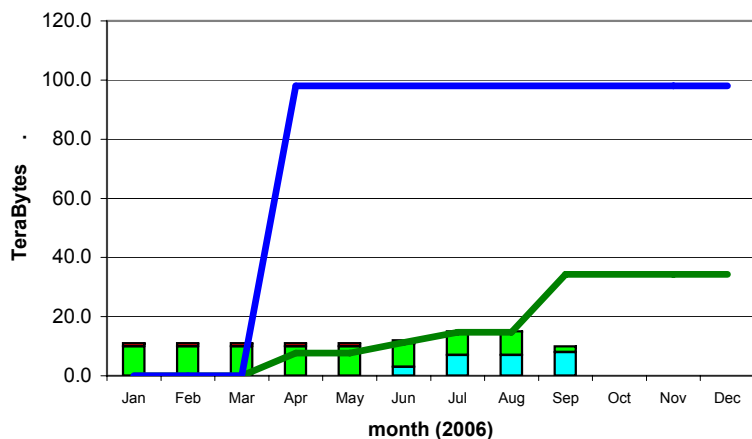
CPU Time Delivered



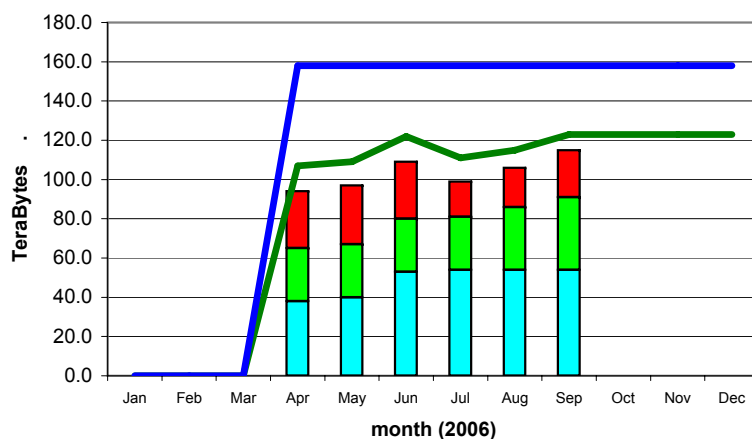
Wall-clock Time Delivered



Disk Storage Used



Tape Storage Used



ALICE █
ATLAS █

CMS █
LHCb █

installed capacity (inc. efficiency factor) —
MoU commitment (inc. efficiency factor) —



WLCG Accounting Summary

September 2006
Centre RAL

data source: site reports to LCG Project Office

Please report accounting data in the shaded cells and return the report to lcg.office@cern.ch

MoU pledges for 2006	
CPU (KSI2K-years)	980
Disk (Tbytes)	450
Tape (Tbytes)	664

Standard efficiency factors	
Scheduled cpu used (Tier-0, -1)	85%
Chaotic cpu used (Tier-2)	60%
Disk utilisation	70%
Mass store utilisation	100%

		CPU used - KSI2K-days												MoU * monthly average	aggregate 2006 to date***				
		Jan-06	Feb-06	Mar-06	Apr-06	May-06	Jun-06	Jul-06	Aug-06	Sep-06	Oct-06	Nov-06	Dec-06		total	% MoU			
CPU Grid	ALICE	cpu	306	228		41	102	571	568	430	257							2,503	
		wall	427	279	6	54	156	603	685	732	674							3,616	
	ATLAS	cpu	1,358	3,568	3,579	2,482	4,860	6,125	6,292	1,890	2,526							32,680	
		wall	1,576	3,817	3,857	2,624	5,255	6,729	7,412	2,547	3,449							37,266	
	CMS	cpu	1,954	567	852	1,853	2,433	3,055	3,593	5,159	8,209							27,675	
		wall	2,058	770	977	1,881	2,590	3,173	3,979	6,189	9,307							30,924	
	LHCb	cpu	235	196	494	2,355	6,436	8,071	7,671	11,683	7,079							44,220	
		wall	379	275	544	2,451	7,436	8,536	8,860	13,062	7,536							49,079	
	TOTAL	cpu	3,853	4,559	4,925	6,731	13,831	17,822	18,124	19,162	18,071	0	0	0	24,990			107,078	48%
		wall	4,440	5,141	5,384	7,010	15,437	19,041	20,936	22,530	20,966	0	0	0	n/a			120,885	n/a
CPU Non-Grid	ALICE	cpu																0	
		wall																0	
	ATLAS	cpu	98	152	271	1,509	1,007	116	80	67	718							4,018	
		wall	111	165	297	1,547	1,052	130	90	85	787							4,264	
	CMS	cpu	9	129	760		7	1	4	6	20							936	
		wall	12	134	787	2	10	1	4	18	87							1,055	
	LHCb	cpu	714	58	578	130			306	618	126							2,530	
		wall	750	59	647	189			397	959	130							3,131	
	TOTAL	cpu	821	339	1,609	1,639	1,014	117	390	691	864	0	0	0	24,990			7,484	3%
		wall	873	358	1,731	1,738	1,062	131	491	1,062	1,004	0	0	0	n/a			8,450	n/a
CPU Total	ALICE	cpu	306	228		41	102	571	568	430	257							2,503	
		wall	427	279	6	54	156	603	685	732	674							3,616	
	ATLAS	cpu	1,456	3,720	3,850	3,991	5,867	6,241	6,372	1,957	3,244							36,698	
		wall	1,687	3,982	4,154	4,171	6,307	6,859	7,502	2,632	4,236							41,530	
	CMS	cpu	1,963	696	1,612	1,853	2,440	3,056	3,597	5,165	8,229							28,611	
		wall	2,070	904	1,764	1,883	2,600	3,174	3,983	6,207	9,394							31,979	
	LHCb	cpu	949	254	1,072	2,485	6,436	8,071	7,977	12,301	7,205							46,750	
		wall	1,129	334	1,191	2,640	7,436	8,536	9,257	14,021	7,666							52,210	
	TOTAL	cpu	4,674	4,898	6,534	8,370	14,845	17,939	18,514	19,853	18,935	0	0	0	24,990			114,562	51%
		wall	5,313	5,499	7,115	8,748	16,499	19,172	21,427	23,592	21,970	0	0	0	n/a			129,335	n/a
	installed capacity**		225	225	507	507	507	700	700	700									
	cpu usage as % installed****	n/a	91%	110%	65%	115%	139%	104%	111%	106%	n/a	n/a	n/a						

Notes - cpu tables

- * MoU monthly average - commitment in MoU for KSI2K-days of cpu time per month (includes efficiency factor)
- ** installed capacity - capacity installed (KSI2K)
- *** aggregate 2006 to date - total - KSI2K-days delivered in calendar year to current date
- % MoU - percentage of MoU commitment in calendar year to current date
- **** cpu usage as % installed - includes efficiency factor



WLCG Accounting Summary

September 2006
Centre RAL

data source: site reports to LCG Project Office

Please report accounting data in the shaded cells and return the report to lcg.office@cern.ch

MoU pledges for 2006	
CPU (KSI2K-years)	980
Disk (Tbytes)	450
Tape (Tbytes)	664

Standard efficiency factors	
Scheduled cpu used (Tier-0, -1)	85%
Chaotic cpu used (Tier-2)	60%
Disk utilisation	70%
Mass store utilisation	100%

		Jan-06	Feb-06	Mar-06	Apr-06	May-06	Jun-06	Jul-06	Aug-06	Sep-06	Oct-06	Nov-06	Dec-06	MoU*	last month as MoU	%
Disk Space - TBytes	ALICE	allocated								2	2					
		used														
	ATLAS	allocated	14	14	16	16	13	16	18	17	17					
		used	8	8	10	10	7	10	11	14	14					
	CMS	allocated	28	28	28	29	28	21	26	19	19					
		used	17	19	19	11	11	11	14	14	15					
	LHCb	allocated	2	2	7	7	7	20	21	21	21					
		used	1	1	5	5	5	9	8	8	9					
	TOTAL	allocated	44	44	51	52	48	57	65	59	59	0	0	0	450	13%
		used	26	28	34	26	23	30	33	36	38	0	0	0	315	12%
	installed capacity**	40	40	40	64	64	64	64	60	60						
	disk usage as % installed***	93%	100%	121%	58%	51%	67%	74%	86%	90%	n/a	n/a	n/a			

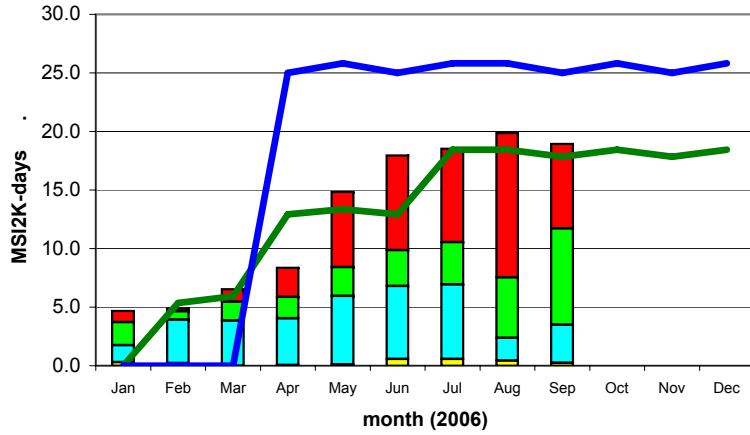
		Jan-06	Feb-06	Mar-06	Apr-06	May-06	Jun-06	Jul-06	Aug-06	Sep-06	Oct-06	Nov-06	Dec-06	MoU*	last month as MoU	%
Tape Space Used - TBytes	ALICE								2	8						
	ATLAS	11	11	12	11	11	11	38	47	54						
	CMS	21	26	26	35	36	32	36	39	42						
	LHCb	10	11	12	10	10	10	11	14	19						
	TOTAL	42	48	50	56	57	53	85	102	123	0	0	0	664	19%	
		installed capacity**	70	70	70	160	160	160	253	253	253					
		tape usage as % installed***	60%	69%	71%	35%	36%	33%	34%	40%	49%	n/a	n/a	n/a		

Notes - disk and tape tables
 Space used/allocated at end of the calendar month
 * MoU - commitment in MoU for data storage - includes efficiency factors for space used
 ** installed capacity - capacity installed (TB)
 *** disk/tape usage as % installed - includes efficiency factor

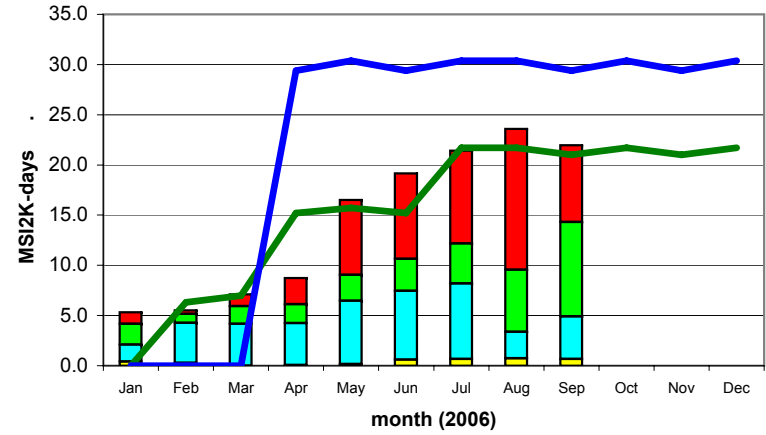
Comments:
max 255 chars

RAL

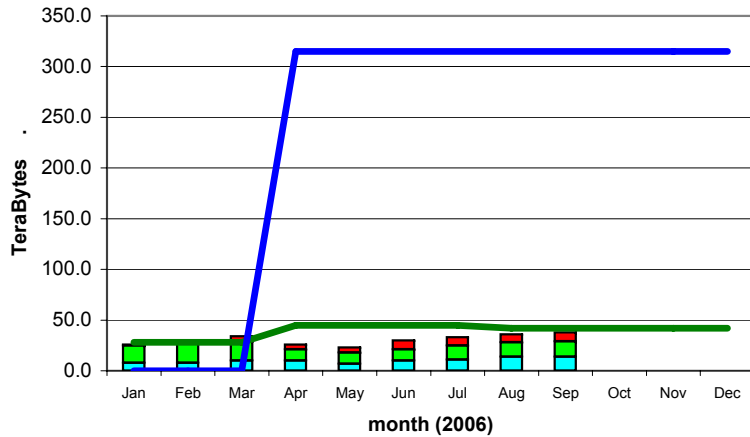
CPU Time Delivered



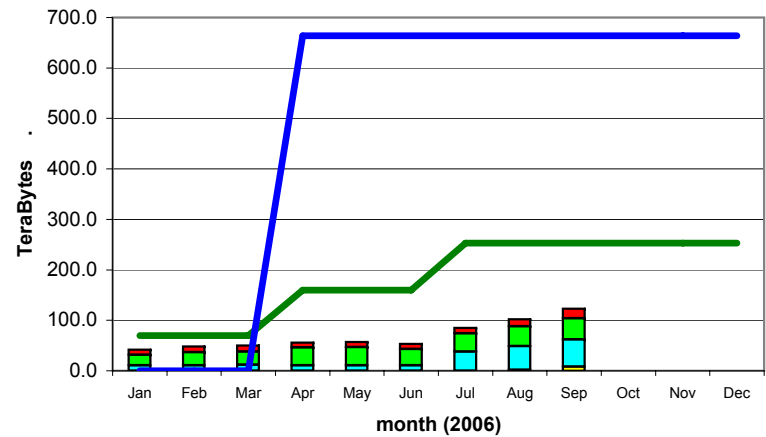
Wall-clock Time Delivered



Disk Storage Used



Tape Storage Used



ALICE █ **CMS** █ installed capacity (inc. efficiency factor) —
ATLAS █ **LHCb** █ MoU commitment (inc. efficiency factor) —



WLCG Accounting Summary

September 2006 data source: site reports to LCG Project Office
Centre TRIUMF

Please report accounting data in the shaded cells and return the report to lcg.office@cern.ch

MoU pledges for 2006	
CPU (KSI2K-years)	170
Disk (Tbytes)	27
Tape (Tbytes)	100

Standard efficiency factors	
Scheduled cpu used (Tier-0, -1)	85%
Chaotic cpu used (Tier-2)	60%
Disk utilisation	70%
Mass store utilisation	100%

		Jan-06	Feb-06	Mar-06	Apr-06	May-06	Jun-06	Jul-06	Aug-06	Sep-06	Oct-06	Nov-06	Dec-06	MoU*	last month as MoU	%	
Disk Space - TBytes	ALICE	allocated															
		used															
	ATLAS	allocated	6	6	6	6	6	6	12	12							
		used	1	1	2	2	3	3	4	6	7						
	CMS	allocated															
		used															
	LHCb	allocated															
		used															
	TOTAL	allocated	6	6	6	6	6	6	6	12	12	0	0	0	27	44%	
		used	1	1	2	2	3	3	4	6	7	0	0	0	19	37%	
	installed capacity**				6	6	6	6	12	12							
	disk usage as % installed***	n/a	n/a	n/a	48%	71%	71%	95%	71%	83%	n/a	n/a	n/a				

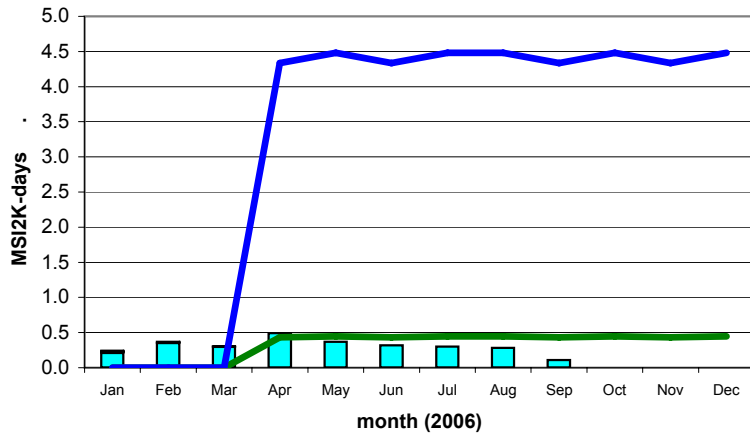
		Jan-06	Feb-06	Mar-06	Apr-06	May-06	Jun-06	Jul-06	Aug-06	Sep-06	Oct-06	Nov-06	Dec-06	MoU*	last month as MoU	%
Tape Space Used - TBytes	ALICE															
	ATLAS															
	CMS															
	LHCb															
	TOTAL		0	0	0	0	0	0	0	0	0	0	0	100	0%	
		installed capacity**				12	12	12	12	12	12					
		tape usage as % installed***	n/a	n/a	n/a	0%	0%	0%	0%	0%	0%	n/a	n/a	n/a		

Notes - disk and tape tables
 Space used/allocated at end of the calendar month
 * MoU - commitment in MoU for data storage - includes efficiency factors for space used
 ** installed capacity - capacity installed (TB)
 *** disk/tape usage as % installed - includes efficiency factor

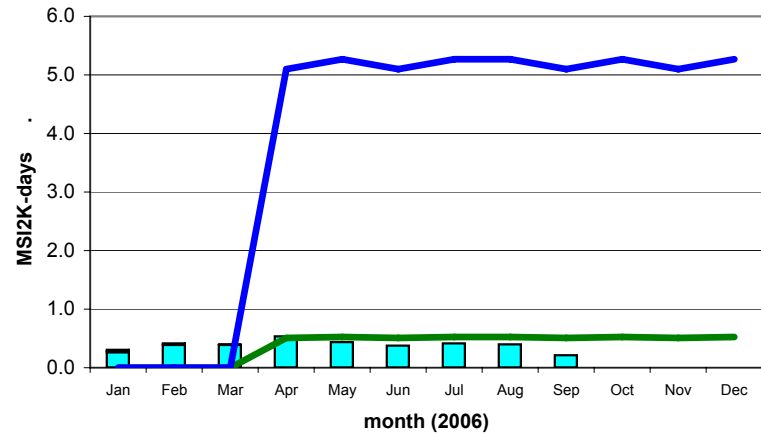
Comments:
max 255 chars

TRIUMF

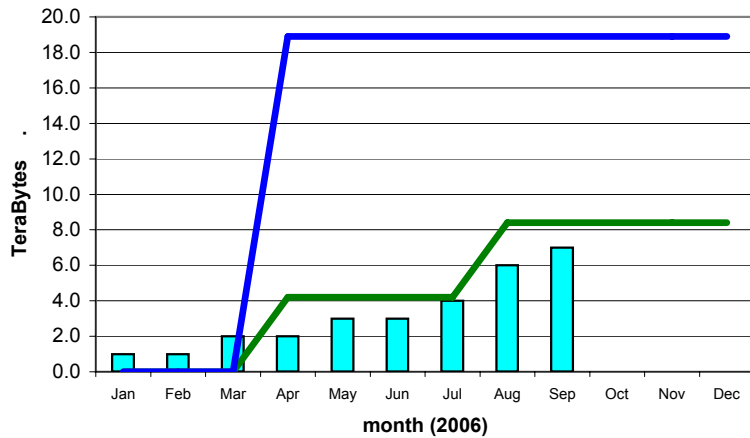
CPU Time Delivered



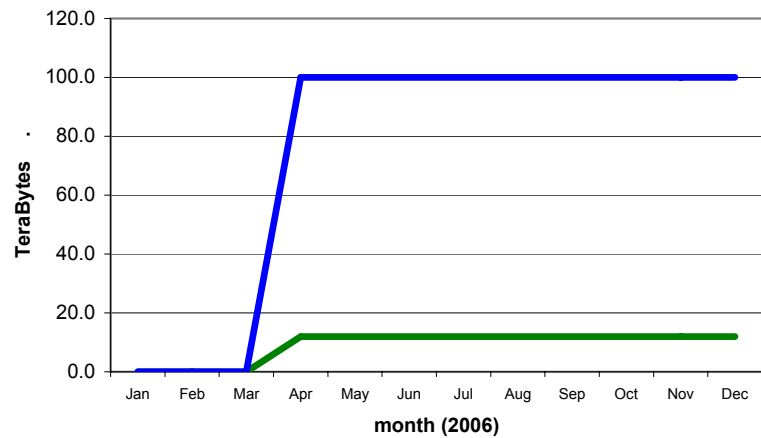
Wall-clock Time Delivered



Disk Storage Used



Tape Storage Used



ALICE █
ATLAS █

CMS █
LHCb █

installed capacity (inc. efficiency factor) —
MoU commitment (inc. efficiency factor) —